

交流电动机 AC ELECTRIC MOTOR

杭州安久传动有限公司
Hangzhou Ang Drive Co., Ltd.



杭州安久传动有限公司
Hangzhou Ang Drive Co., Ltd.
Tel : 0086 571 82101305
Email : info@angdrive.com
Website : www.angdrive.com

Company profile

ANG is specialized in AC electric motors, DC motors, worm gearbox, helical gearbox, and related transmission products.

The company strictly implements the quality management system, from design & development, raw material procurement, incoming inspection consistent process to the finished product packaging & delivery, and expects to provide our customers with high performance, competitive price and more suitable transmission solutions.

We insist on high-quality products and services to create value for customers and satisfy customers.



Contents

THREE-PHASE INDUCTION MOTOR

Y SERIES THREE-PHASE INDUCTION MOTOR	P01-P06
Y2 SERIES THREE-PHASE INDUCTION MOTOR	P07-P11
MS SERIES THREE-PHASE INDUCTION MOTOR WITH AL. HOUSING	P12-P14
IE2 SERIES THREE-PHASE INDUCTION MOTOR	P15-P18
IE3 SERIES THREE-PHASE INDUCTION MOTOR	P19-P22
YB3 SERIES EXPLOSION-PROOF THREE-PHASE INDUCTION MOTOR	P23-P28
AMP SERIES THREE-PHASE INDUCTION MOTOR	P29-P34
YEJ SERIES THREE-PHASE ELECTROMAGNETIC BRAKE MOTOR	P35-P36
YVF2 SERIES FREQUENCY CONVERTER VELOCITY MODULATION THREE-PHASE INDUCTION MOTOR	P37-P39
AS SERIES WATERPROOF MOTOR	P40

SINGLE-PHASE INDUCTION MOTOR

YC SERIES SINGLE PHASE CAPACITOR START INDUCTION ELECTRIC MOTOR	P41-P42
ML /MC SERIES SINGLE-PHASE MOTORS WITH DOUBLE CAPACITORS (ALUMINIUM HOUSING)	P43-P44
YL SERIES SINGLE-PHASE TWO-VALUE CAPACITOR MOTOR	P45-P46

IE3(2级能效 GB2)效率限制值 IE3 EFFICIENCY

Nominal efficiency limits(%)for 50Hz IE3					Nominal efficiency limits(%)for 60Hz IE3				
P _n kW	Number of poles/synchronous speed				P _n kW	Number of poles/synchronous speed			
	2/3000	4/1500	6/1000	8/750		2/3600	4/1800	6/1200	8/900
0.12	60.8	64.8	57.7	50.7	0.12	62.0	66.0	64.0	59.5
0.18	65.9	69.9	63.9	58.7	0.18	65.6	69.5	67.5	64.0
0.2	67.2	71.1	65.4	60.6	0.25	69.5	73.4	71.4	68.0
0.25	69.7	73.5	68.6	64.1	0.37	73.4	78.2	75.3	72.0
0.37	73.8	77.3	73.5	69.3	0.55	76.8	81.1	81.7	74.0
0.40	74.6	78.0	74.4	70.1	0.75	77.0	83.5	82.5	75.5
0.55	77.8	80.8	77.2	73.0	1.1	84.0	86.5	87.5	78.5
0.75	80.7	82.5	78.9	75.0	1.5	85.5	86.5	88.5	84.0
1.1	82.7	84.1	81.0	77.7	2.2	86.5	89.5	89.5	85.5
1.5	84.2	85.3	82.5	79.7	3.7	88.5	89.5	89.5	86.5
2.2	85.9	86.7	84.3	81.9	5.5	89.5	91.7	91.0	86.5
3	87.1	87.7	85.6	83.5	7.5	90.2	91.7	91.0	89.5
4	88.1	88.6	86.8	84.8	11	91.0	92.4	91.7	89.5
5.5	89.2	89.6	88.0	86.2	15	91.0	93.0	91.7	90.2
7.5	90.1	90.4	89.1	87.3	18.5	91.7	93.6	93.0	90.2
11	91.2	91.4	90.3	88.6	22	91.7	93.6	93.0	91.7
15	91.9	92.1	91.2	89.6	30	92.4	94.1	94.1	91.7
18.5	92.4	92.6	91.7	90.1	37	93.0	94.5	94.1	92.4
22	92.7	93.0	92.2	90.6	45	93.6	95.0	94.5	92.4
30	93.3	93.6	92.9	91.3	55	93.6	95.4	94.5	93.6
37	93.7	93.9	93.3	91.8	75	94.1	95.4	95.0	93.6
45	94.0	94.2	93.7	92.2	90	95.0	95.4	95.0	94.1
55	94.3	94.6	94.1	92.5	110	95.0	95.8	95.8	94.1
75	94.7	95.0	94.6	93.1	150	95.4	96.2	95.8	94.5
90	95.0	95.2	94.9	93.4	185-1000	95.8	96.2	95.8	95.0
110	95.2	95.4	95.1	93.7					
132	95.4	95.6	95.4	94.0					
160	95.6	95.8	95.6	94.3					
200-1000	95.8	96.0	95.8	94.6					

IE2(3级能效 GB3)效率限制值 IE2 EFFICIENCY

Nominal efficiency limits(%)for 50Hz IE2					Nominal efficiency limits(%)for 60Hz IE2				
P _n kW	Number of poles/synchronous speed				P _n kW	Number of poles/synchronous speed			
	2/3000	4/1500	6/1000	8/750		2/3600	4/1800	6/1200	8/900
0.12	53.6	59.1	50.8	39.8	0.12	59.5	64.0	50.5	40.0
0.18	60.4	64.7	56.6	45.9	0.18	64.0	68.0	55.0	46.0
0.2	61.9	65.9	58.2	47.4	0.25	68.0	70.0	59.5	52.0
0.25	64.8	68.5	61.6	50.6	0.37	72.0	72.0	64.0	58.0
0.37	69.5	72.7	67.6	56.1	0.55	74.0	75.5	68.0	62.0
0.4	70.4	73.5	68.8	57.2	0.75	75.5	78.0	73.0	66.0
0.55	74.1	77.1	73.1	61.7	1.1	82.5	84.0	85.5	75.5
0.75	77.4	79.6	75.9	66.2	1.5	84.0	84.0	86.5	82.5
1.1	79.6	81.4	78.1	70.8	2.2	85.5	87.5	87.5	84.0
1.5	81.3	82.8	79.8	74.1	3.7	87.5	87.5	87.5	85.5
2.2	83.2	84.3	81.8	77.6	5.5	88.5	89.5	89.5	85.5
3	84.6	85.5	83.3	80.0	7.5	89.5	89.5	89.5	88.5
4	85.8	86.6	84.6	81.9	11	90.2	91.0	90.2	88.5
5.5	87.0	87.7	86.0	83.8	15	90.2	91.0	90.2	89.5
7.5	88.1	88.7	87.2	85.3	18.5	91.0	92.4	91.7	89.5
11	89.4	89.8	88.7	86.9	22	91.0	92.4	91.7	91.0
15	90.3	90.6	89.7	88.0	30	91.7	93.0	93.0	91.0
18.5	90.9	91.2	90.4	88.6	37	92.4	93.0	93.0	91.7
22	91.3	91.6	90.9	89.1	45	93.0	93.6	93.6	91.7
30	92.0	92.3	91.7	89.8	55	93.0	94.1	93.6	93.0
37	92.5	92.7	92.2	90.3	75	93.6	94.5	94.1	93.0
45	92.9	93.1	92.7	90.7	90	94.5	94.5	94.1	93.6
55	93.2	93.5	93.1	91.0	110	94.5	95.0	95.0	93.6
75	93.8	94.0	93.7	91.6	150	95.0	95.0	95.0	93.6
90	94.1	94.2	94.0	91.9	185	95.4	95.0	95.0	93.6
110	94.3	94.5	94.3	92.3	220-335	95.4	95.4	95.0	93.6
132	94.6	94.7	94.6	92.6	375-1000	95.4	95.8	95.0	94.1
160	94.8	94.9	94.8	93.0					
200-1000	95.0	95.1	95.0	93.5					

IE1效率限制值 IE1 EFFICIENCY

Nominal efficiency limits(%)for 50Hz IE1					Nominal efficiency limits(%)for 60Hz IE1				
P _n kW	Number of poles/synchronous speed				P _n kW	Number of poles/synchronous speed			
	2/3000	4/1500	6/1000	8/750		2/3600	4/1800	6/1200	8/900
0.12	45.0	50.0	38.3	31.0	0.12	57.5	62.0	48.0	36.0
0.18	52.8	57.0	45.5	38.0	0.18	62.0	66.0	52.5	40.0
0.2	54.6	58.5	47.6	39.7	0.25	64.0	68.0	57.5	50.5
0.25	58.2	61.5	52.1	43.4	0.37	70.0	70.0	62.0	57.5
0.37	63.9	66.0	59.7	49.7	0.55	72.0	74.0	66.0	59.5
0.4	64.9	66.8	61.1	50.9	0.75	74.0	77.0	72.0	64.0
0.55	69.0	70.0	65.8	56.1	1.1	78.5	79.0	75.0	73.5
0.75	72.1	72.1	70.0	61.2	1.5	81.0	81.5	77.0	77.0
1.1	75.0	75.0	72.9	66.5	2.2	81.5	83.0	78.5	78.0
1.5	77.2	77.2	75.2	70.2	3.7	84.5	85.0	83.5	80.0
2.2	79.7	79.7	77.7	74.2	5.5	86.0	87.0	85.0	84.0
3	81.5	81.5	79.7	77.0	7.5	87.5	87.5	86.0	85.0
4	83.1	83.1	81.4	79.2	11	87.5	88.5	89.0	87.5
5.5	84.7	84.7	83.1	81.4	15	88.5	89.5	89.5	88.5
7.5	86.0	86.0	84.7	83.1	18.5	89.5	90.5	90.2	88.5
11	87.6	87.6	86.4	85.0	22	89.5	91.0	90.2	89.5
15	88.7	88.7	87.7	86.2	30	90.2	91.7	91.7	90.2
18.5	89.3	89.3	88.6	86.9	37	91.5	92.4	91.7	91.0
22	89.9	89.9	89.2	87.4	45	91.7	93.0	93.0	91.7
30	90.7	90.7	90.2	88.3	55	92.4	93.0	92.1	91.5
37	91.2	91.2	90.8	88.8	75	93.0	93.2	93.0	92.0
45	91.7	91.7	91.4	89.2	90	93.0	93.2	93.0	92.5
55	92.1	92.1	91.9	89.7	110	93.0	93.5	94.1	92.5
75	92.7	92.7	92.6	90.3	150-1000	94.1	94.5	94.1	92.5
90	93.0	93.0	92.9	90.7					
110	93.3	93.3	93.3	91.1					
132	93.5	93.5	93.5	91.5					
160	93.8	93.8	93.8	91.9					
200	94.0	94.0	94.0	92.5					
250	94.0	94.0	94.0	92.5					
315	94.0	94.0	94.0	92.5					
355	94.0	94.0	94.0	92.5					
400	94.0	94.0	94.0	92.5					
450	94.0	94.0	94.0	92.5					
500-1000	94.0	94.0	94.0	92.5					

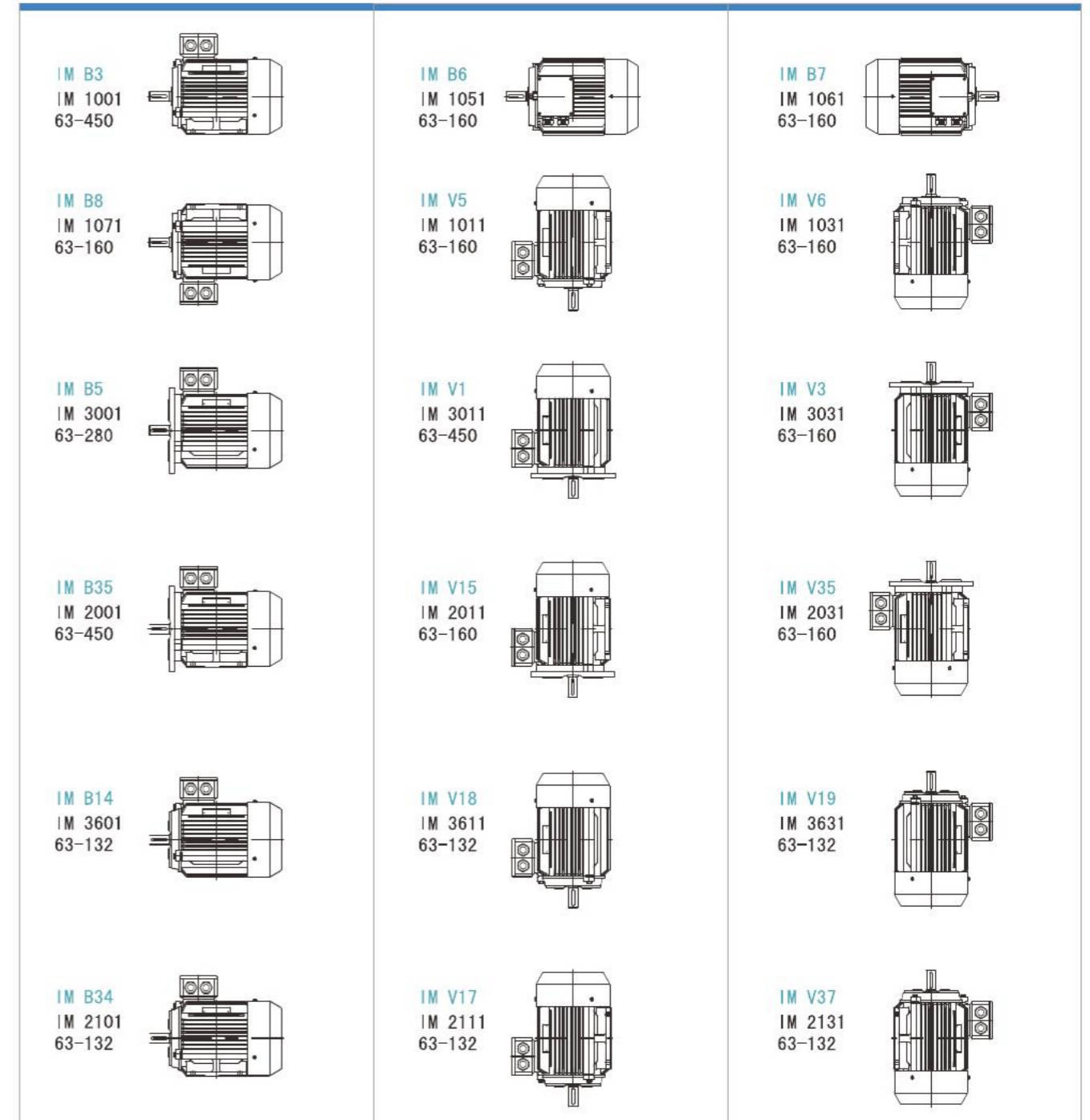
安装方式 MOUNTING ARRANGEMENT

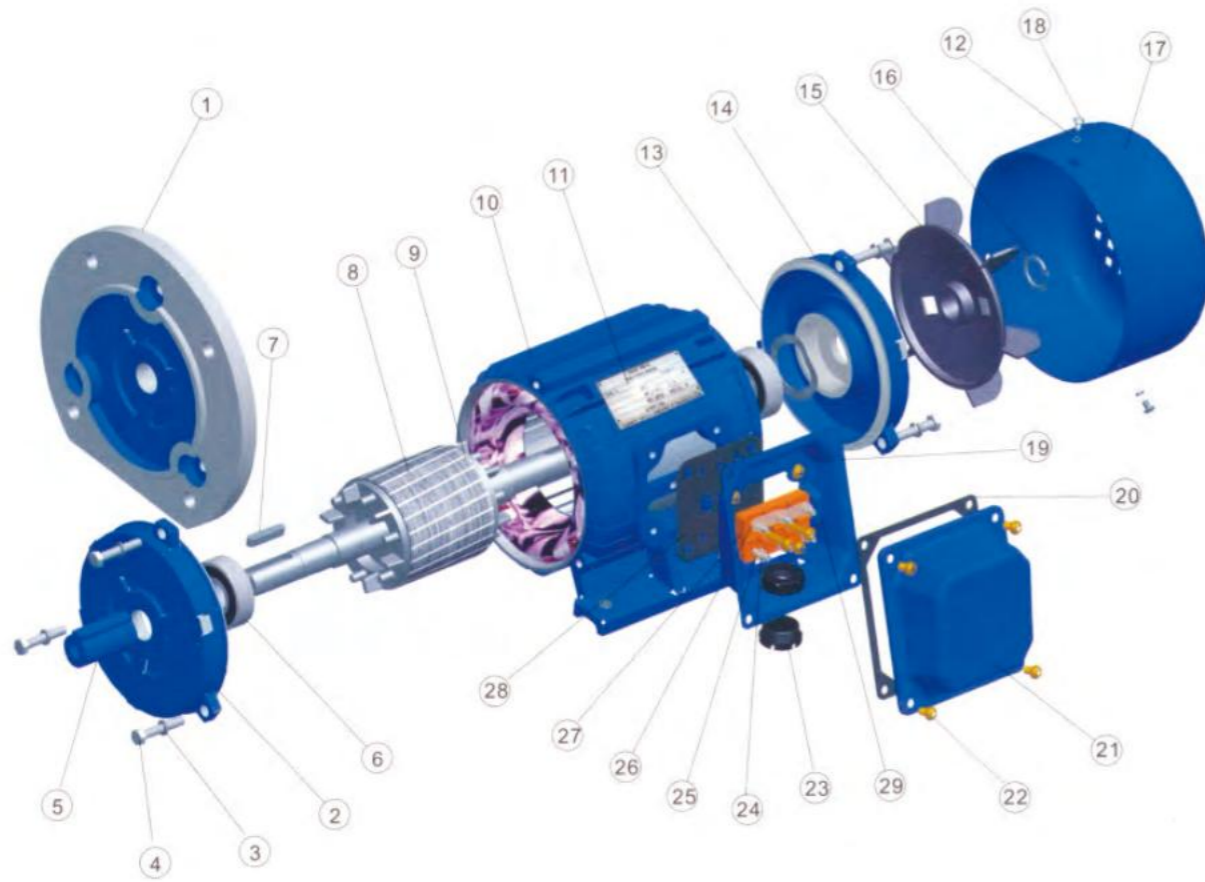
示意图
Diagram

基本结构型式
Fundamental arrangement

安装方式
Mounting arrangement

制造范围 (机座号)
Range of manufacture (frame size)





EXPLODED VIEW

- | | | |
|-------------------|----------------------|---------------------|
| 1.B5 Flange | 11.Name plate | 21.Terminal box lid |
| 2.Front endshield | 12.Washer | 22.Screw |
| 3.Spring washer | 13.Wave form | 23.Jacket |
| 4.Bolt | 14.Rear endshield | 24.Brass washer |
| 5.Shaft cover | 15.Fan | 25.Brass net |
| 6.Bearing | 16.Fan clamp | 26.Brass lug |
| 7.Key | 17.Fan cowl | 27.Terminal board |
| 8.Rotor | 18.Fan cowl screw | 28.Leather washer |
| 9.Stator | 19.Terminal box base | 29.Earth mark |
| 10.Frame | 20.Gasket | |



FEATURES:

Y series motors are totally enclosed and fan cooled(TEFC),three-phase squirrel cage induction motors. They are newly designed in conformity with the relevant requirements of IEC standards.

Y series motors have outstanding performance,such as high efficiency, energy-saving,high starting torque, low noise, little vibration, reliable operation and easy maintenance, etc.

Y series motors are widely used in many places,where do not exist combustible, explosive or corrosive gas, and without any special requirements, such as drilling machines,pumps, fans, mixer, transport machines,food machines, agriculture machines and equipments, etc.

OPERATING CONDITONS:

Ambient temperature: $-15^{\circ}\text{C} \leq \theta \leq 40^{\circ}\text{C}$

Altitude: Not exceed 1000meters

Rated voltage: 380V

Rated frequency: 50Hz

Duty/Rate: Continuous(S1)

Insulation class: Class B

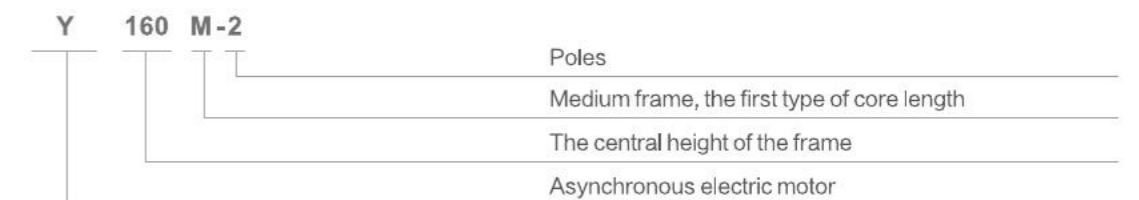
Protection type: IP44

Cooling type: IC411

Connection: Y Start connection for up to 3KW.

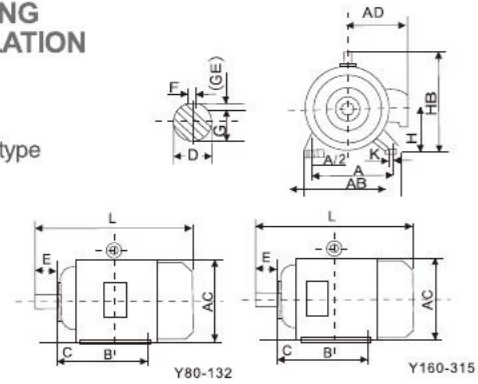
▲Delta connection for 4KW and above.

SAMPLE: Y 160 M -2

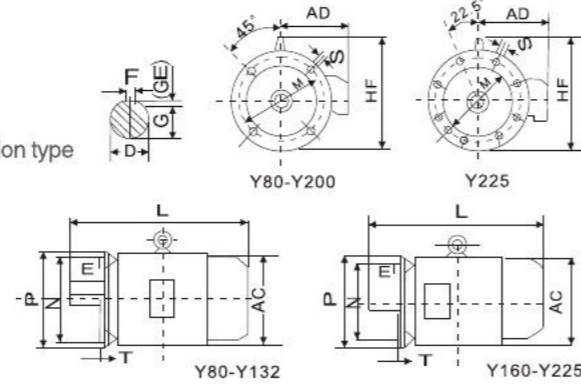


MOUNTING INSTALLATION

B3 Installation type



B5 Installation type



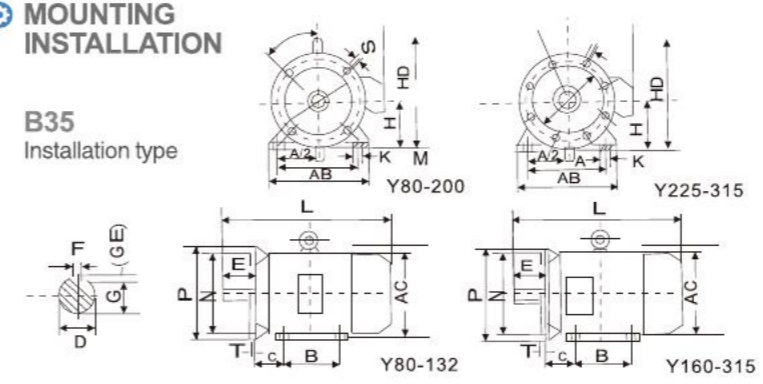
INSTALLATION SIZE AND OVERALL DIMENSION

B3 OVERALL DIMENSION (mm)																
Frame Size	Poles	Frame						Shaft End				AB	AC	AD	HB	L
		A	A/2	B	C	H	K	D	E	F	G					
71	2,4,6	112	56	90	45	71	7	14	30	5	11	150	145	80	195	255
80	2,4	125	62.5	100	50	80	10	19	40	6	15.5	165	175	150	175	290
90S	2,4,6	140	70	100	56	90	10	24	50	8	20	180	195	160	195	315
90L	2,4,6	140	70	125	56	90	10	24	50	8	20	180	195	160	195	340
100L	2,4,6	160	80	140	63	100	12	28	60	8	24	205	215	180	245	380
112M	2,4,6	190	95	140	70	112	12	28	60	8	24	245	240	190	265	400
132S	2,4,6,8	216	108	140	89	132	12	38	80	10	33	280	275	210	315	475
132M	2,4,6,8	216	108	178	89	132	12	38	80	10	33	280	275	210	315	515
160M	2,4,6,8	254	127	210	108	160	15	42	110	12	37	330	335	265	385	605
160L	2,4,6,8	254	127	254	108	160	15	42	110	12	37	330	335	265	385	650
180M	2,4,6,8	279	139.5	241	121	180	15	48	110	14	42.5	355	380	285	430	670
180L	2,4,6,8	279	139.5	279	121	180	15	48	110	14	42.5	355	380	285	430	710
200L	2,4,6,8	318	159	305	133	200	19	55	110	16	49	395	420	315	475	775
225S	4,8	356	178	286	149	225	19	60	140	18	53	435	475	345	530	820
225M	2	356	178	311	149	225	19	55	110	16	49	435	475	345	530	815
225M	4,6,8	356	178	311	149	225	19	60	140	18	53	435	475	345	530	845
250M	2	406	203	349	168	250	24	60	140	18	53	490	515	385	575	930
250M	4,6,8	406	203	349	168	250	24	65	140	18	58	490	515	385	575	930
280S	2	457	228.5	368	190	280	24	65	140	18	58	550	585	410	640	1000
280S	4,6,8	457	228.5	368	190	280	24	75	140	20	67.5	550	585	410	640	1000
280M	2	457	228.5	419	190	280	24	65	140	18	58	550	585	410	640	1050
280M	4,6,8	457	228.5	419	190	280	24	75	140	20	67.5	550	585	410	640	1050
315S	2	508	254	406	216	315	28	65	140	18	58	744	645	576	865	1240
315S	4,6,8,10	508	254	406	216	315	28	80	170	22	71	744	645	576	865	1270
315M	2	508	254	457	216	315	28	65	140	18	58	744	645	576	865	1310
315M	4,6,8,10	508	254	457	216	315	28	80	170	22	71	744	645	576	865	1340
315L	2	508	254	508	216	315	28	65	140	18	58	744	645	576	865	1340
315L	4,6,8,10	508	254	508	216	315	28	80	170	22	71	744	645	576	865	1340
355M	2	610	305	560	254	355	28	75	140	20	67.5	730	710	655	1010	1500
355M	4,6,8,10	610	305	560	254	355	28	95	170	25	86	730	710	655	1010	1530
355L	2	610	305	630	254	355	28	75	140	20	67.5	730	710	655	1010	1500
355L	4,6,8,10	610	305	630	254	355	28	95	170	25	86	730	710	655	1010	1530

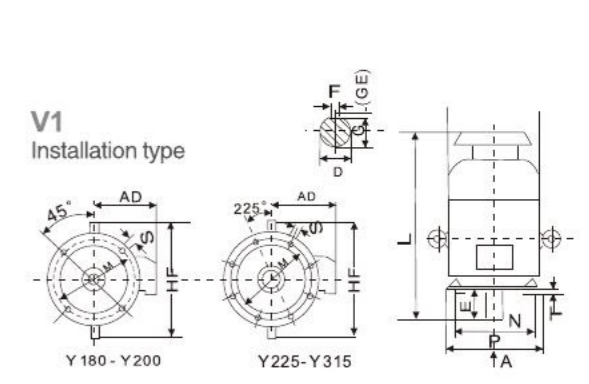
B5 OVERALL DIMENSION (mm)																
Frame Size	Poles	Shaft End				Flange End				AC	AD	HF	L			
		D	E	F	G	M	N	P	R					S	T	Holes
71	2,4,6	14	30	5	11	130	110	160	0	10	3.5	4	145	80	145	255
80	2,4	19	40	6	15.5	165	130	200	0	12	3.5	4	175	150	185	290
90S	2,4,6	24	50	8	20	165	130	200	0	12	3.5	4	195	160	195	315
90L	2,4,6	24	50	8	20	165	130	200	0	12	3.5	4	195	160	195	340
100L	2,4,6	28	60	8	24	215	180	250	0	12	3.5	4	215	180	245	380
112M	2,4,6	28	60	8	24	215	180	250	0	12	3.5	4	240	190	265	400
132S	2,4,6,8	38	80	10	33	265	230	300	0	15	4	4	275	210	315	475
132M	2,4,6,8	38	80	10	33	265	230	300	0	15	4	4	275	210	315	515
160M	2,4,6,8	42	110	12	37	300	250	350	0	19	5	4	335	265	385	605
160L	2,4,6,8	42	110	12	37	300	250	350	0	19	5	4	335	265	385	650
180M	2,4,6,8	48	110	14	42.5	300	250	350	0	19	5	4	380	285	430	670
180L	2,4,6,8	48	110	14	42.5	300	250	350	0	19	5	4	380	285	430	710
200L	2,4,6,8	55	110	16	49	350	300	400	0	19	5	4	420	315	480	775
225S	4,8	60	140	18	53	400	350	450	0	19	5	8	475	345	535	820
225M	2	55	110	16	49	400	350	450	0	19	5	8	475	345	535	815
225M	4,6,8	60	140	18	53	400	350	450	0	19	5	8	475	345	535	845
250M	2	60	140	18	53	500	450	550	0	19	5	8	515	385	650	930
250M	4,6,8	65	140	18	58	500	450	550	0	19	5	8	515	385	650	930
280S	2	65	140	18	58	500	450	550	0	19	5	8	585	410	720	1000
280S	4,6,8	75	140	20	67.5	500	450	550	0	19	5	8	585	410	720	1000
280M	2	65	140	18	58	500	450	550	0	19	5	8	585	410	720	1050
280M	4,6,8	75	140	20	67.5	500	450	550	0	19	5	8	585	410	720	1050
315S	2	65	140	18	58	600	550	660	0	24	6	8	645	475	900	1240
315S	4,6,8,10	80	170	22	71	600	550	660	0	24	6	8	645	475	900	1270
315M	2	65	140	18	58	600	550	660	0	24	6	8	645	475	900	1310
315M	4,6,8,10	80	170	22	71	600	550	660	0	24	6	8	645	475	900	1340
315L	2	65	140	18	58	600	550	660	0	24	6	8	645	475	900	1310
315L	4,6,8,10	80	170	22	71	600	550	660	0	24	6	8	645	475	900	1340

MOUNTING INSTALLATION

B35 Installation type



V1 Installation type



INSTALLATION SIZE AND OVERALL DIMENSION

B35 OVERALL DIMENSION (mm)																							
Frame Size	Poles	Frame						Shaft End				Flange End							AB	AC	AD	HD	L
		A	A/2	B	C	H	K	D	E	F	G	M	N	P	R	S	T	Holes					
71	2,4,6	112	56	90	45	71	7	14	30	5	11	130	110	160	0	10	3.5	4	150	145	80	195	255
80	2,4	125	62.5	100	50	80	10	19	40	6	15.5	165	130	200	0	12	3.5	4	165	175	150	175	290
90S	2,4,6	140	70	100	56	90	10	24	50	8	20	165	130	200	0	12	3.5	4	180	195	160	195	315
90L	2,4,6	140	70	125	56	90	10	24	50	8	20	165	130	200	0	12	3.5	4	180	195	160	195	340
100L	2,4,6	160	80	140	63	100	12	28	60	8	24	215	180	250	0	12	3.5	4	205	215	180	245	380
112M	2,4,6	190	95	140	70	112	12	28	60	8	24	215	180	250	0	12	3.5	4	245	240	190	265	400
132S	2,4,6,8	216	108	140	89	132	12	38	80	10	33	265	230	300	0	15	4	4	280	275	210	315	475
132M	2,4,6,8	216	108	178	89	132	12	38	80	10	33	265	230	300	0	15	4	4	280	275	210	315	515
160M	2,4,6,8	254	127	210	108	160	15	42	110	12	37	300	250	350	0	19	5	4	330	335	265	385	605
160L	2,4,6,8	254	127	254	108	160	15	42	110	12	37	300	250	350	0	19	5	4	330	335	265	385	650
180M	2,4,6,8	279	139.5	241	121	180	15	48	110	14	42.5	300	250	350	0	19	5	4	355	380	285	430	670
180L	2,4,6,8	279	139.5	279	121	180	15	48	110	14	42.5	300	250	350	0	19	5	4	355	380	285	430	710
200L	2,4,6,8	318	159	305	133	200	19																

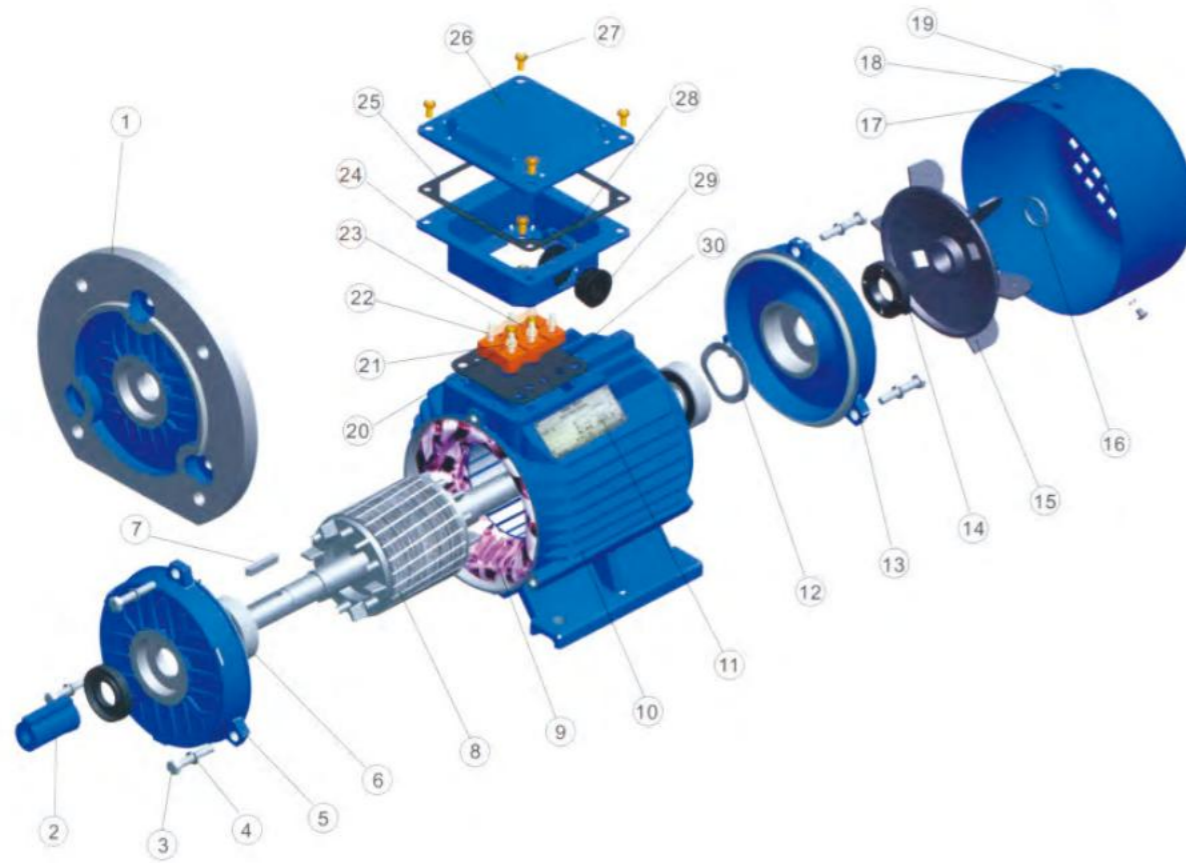
TECHNICAL DATA

Type	Rate Power (KW)	Full load				Locked Current Rated Current T _{start} /T _n	Locked Torque Rated Torque I _{st} /I _n	Max. Torque Rated Torque T _{max} /T _n	Weight(kg)
		Speed(r/min)	Current(A)	Eff.(%)	P.F.(cos)				
Synchronous Speed 3000r/m(2-pole), 50HZ, 380 V									
Y711-2	0.37	2800	1.0	71.5	0.78	6.0	2.5	2.7	10
Y712-2	0.55	2800	1.42	73.5	0.80	6.0	2.5	2.7	12
Y801-2	0.75	2825	1.84	74.5	0.83	7.0	2.4	2.6	16
Y802-2	1.1	2825	2.65	75.0	0.84	7.0	2.4	2.6	17
Y90S-2	1.5	2840	3.48	78.0	0.84	7.0	2.5	2.6	20
Y90L-2	2.2	2840	4.9	80.0	0.85	7.0	2.5	2.6	23
Y100L-2	3.0	2880	6.5	82.0	0.85	7.0	2.4	2.5	34
Y112M-2	4.0	2890	8.5	83.0	0.85	7.0	2.3	2.4	42
Y132S1-2	5.5	2900	11.4	84.0	0.87	7.0	2.2	2.3	61
Y132S2-2	7.5	2900	15.2	86.0	0.87	7.0	2.1	2.3	68
Y160M1-2	11	2930	22	86.5	0.87	7.0	2.0	2.2	118
Y160M2-2	15	2930	29	88.0	0.88	7.0	2.0	2.2	123
Y160L-2	18.5	2930	36	89.0	0.88	7.0	2.0	2.2	135
Y180M-2	22	2940	43	89.0	0.88	7.0	2.0	2.2	165
Y200L1-2	30	2950	58	89.5	0.88	7.0	2.0	2.2	222
Y200L2-2	37	2950	71	90.0	0.88	7.0	2.0	2.2	235
Y225M-2	45	2970	85	91.0	0.88	7.0	2.0	2.2	289
Y250M-2	55	2970	104	91.0	0.88	7.0	2.1	2.2	364
Y280S-2	75	2970	142	91.5	0.88	7.0	2.1	2.2	570
Y280M-2	90	2970	169	92.0	0.88	7.0	2.1	2.2	557
Y315S-2	110	2970	206	92.0	0.88	6.8	1.8	2.2	870
Y315M-2	132	2970	246	92.5	0.88	6.8	1.8	2.2	930
Y315L1-2	160	2970	297	93.0	0.88	6.8	1.8	2.2	1020
Y315L2-2	200	2970	371	93.0	0.88	6.8	1.8	2.2	1080
Y355M1-2	220	2980	392	94.8	0.90	6.8	1.2	2.2	1770
Y355M2-2	250	2980	444	95.0	0.90	6.8	1.2	2.2	1800
Y355L1-2	280	2980	496	95.3	0.90	6.8	1.2	2.2	1900
Y355L2-2	315	2980	557	95.5	0.90	6.8	1.2	2.2	1950
Synchronous Speed 1500r/m(4-pole), 50HZ, 380 V									
Y711-4	0.25	1400	0.89	65.0	0.66	6.0	2.4	2.7	10
Y712-4	0.37	1400	1.16	67.5	0.70	6.0	2.3	2.5	10
Y801-4	0.55	1400	1.65	71.5	0.71	6.5	2.3	2.5	16
Y802-4	0.75	1400	2.2	73.5	0.73	6.5	2.3	2.4	17
Y90S-4	1.1	1400	3.1	75.0	0.73	6.5	2.3	2.3	21
Y90L-4	1.5	1400	4.0	78.0	0.73	6.5	2.3	2.3	24
Y100L1-4	2.2	1420	5.4	80.0	0.77	7.0	2.2	2.4	32
Y100L2-4	3	1420	7.2	82.0	0.77	7.0	2.2	2.4	35
Y112M-4	4	1440	8.9	84.0	0.81	7.0	2.3	2.4	42
Y132S-4	5.5	1440	12	84.0	0.83	7.0	2.2	2.4	64
Y132M-4	7.5	1440	15.6	87.0	0.84	7.0	2.2	2.4	75
Y160M-4	11	1460	22.6	88.0	0.84	7.0	2.2	2.4	112
Y160L-4	15	1460	31	88.5	0.84	7.0	2.2	2.4	130
Y180M-4	18.5	1470	37	89.5	0.85	7.0	2.2	2.4	160
Y180L-4	22	1470	43	90.0	0.86	7.0	2.1	2.4	175
Y200L-4	30	1470	58	91.0	0.86	7.0	2.1	2.4	228
Y225S-4	37	1480	71	91.5	0.86	7.0	1.9	2.4	280
Y225M-4	45	1480	85	92.0	0.87	7.0	2.1	2.4	318
Y250M-4	55	1480	104	92.0	0.87	7.0	2.0	2.4	381
Y280S-4	75	1480	142	92.0	0.87	7.0	1.9	2.2	528
Y280M-4	90	1480	167	93.0	0.88	7.0	1.9	2.2	602
Y315S-4	110	1480	204	93.0	0.88	7.0	1.9	2.2	875
Y315M-4	132	1480	244	93.5	0.88	7.0	1.9	2.2	945
Y315L1-4	160	1480	295	94.0	0.88	7.0	1.9	2.1	1010
Y315L2-4	200	1480	369	93.5	0.88	7.0	1.8	2.1	1100
Y355M1-4	220	1490	403	94.4	0.87	6.8	1.4	2.2	1750
Y355M2-4	250	1490	461	94.7	0.87	6.8	1.4	2.2	1800
Y355L1-4	280	1490	515	94.9	0.87	6.8	1.4	2.2	1900
Y355L2-4	315	1490	578	95.2	0.87	6.8	1.4	2.2	1950

TECHNICAL DATA

Type	Rate Power (KW)	Full load				Locked Current Rated Current T _{start} /T _n	Locked Torque Rated Torque I _{st} /I _n	Max. Torque Rated Torque T _{max} /T _n	Weight(kg)
		Speed(r/min)	Current(A)	Eff.(%)	P.F.(cos)				
Synchronous Speed 1000r/m(6-pole), 50HZ, 380 V									
Y711-6	0.18	900	0.8	56.0	0.66	4.0	1.9	2.0	14
Y712-6	0.25	900	0.9	59.0	0.68	4.0	1.9	2.0	14.5
Y801-6	0.37	900	1.3	62.0	0.70	4.7	1.9	2.0	15
Y802-6	0.55	900	1.8	65.0	0.72	4.7	1.9	2.1	16
Y90S-6	0.75	910	2.3	72.0	0.70	5.5	2.2	2.3	21
Y90L-6	1.1	910	3.3	73.5	0.70	5.5	2.2	2.2	24
Y100L-6	1.5	940	4.3	76.0	0.70	6.0	2.2	2.3	32
Y112M-6	2.2	940	5.6	80.5	0.74	6.0	2.2	2.3	41
Y132S-6	3	960	7.5	82.0	0.74	6.5	2.0	2.3	64
Y132M1-6	4	960	9.5	84.0	0.76	6.5	2.0	2.3	74
Y132M-6	5.5	960	12.8	85.0	0.77	6.5	2.0	2.3	76
Y160M-6	7.5	970	17	86.0	0.78	6.5	2.0	2.2	105
Y160L-6	11	970	24.6	87.0	0.78	6.5	2.0	2.2	132
Y180L-6	15	970	33	88.0	0.79	6.5	1.9	2.2	178
Y200L1-6	18.5	970	38	89.0	0.82	6.5	1.8	2.2	207
Y200L2-6	22	970	45	90.0	0.82	6.5	1.8	2.3	218
Y225M-6	30	980	61	90.0	0.82	6.5	1.7	2.3	285
Y250M-6	37	980	74	90.5	0.84	6.5	1.9	2.2	368
Y280S-6	45	980	88	91.0	0.85	6.5	1.8	2.0	508
Y280M-6	55	980	107	91.5	0.85	6.5	1.8	2.0	565
Y315S-6	75	980	146	92.0	0.85	6.5	1.6	1.8	870
Y351M-6	90	980	175	92.0	0.85	6.5	1.6	1.8	930
Y315L1-6	110	980	213	92.5	0.85	6.5	1.6	1.8	1000
Y315L2-6	132	980	255	92.5	0.85	6.5	1.6	1.8	1100
Y355M1-6	160	980	300	94.1	0.86	6.7	1.3	2.0	1590
Y355M2-6	200	980	375	94.3	0.86	6.7	1.3	2.0	1760
Y355L1-6	220	980	411	94.5	0.86	6.7	1.3	2.0	1950
Y355L2-6	250	980	466	94.7	0.86	6.7	1.3	2.0	2000
Synchronous Speed 750r/m(8-pole), 50HZ, 380 V									
Y801-8	0.18	690	0.9	51.0	0.61	3.3	1.8	1.9	16
Y802-8	0.25	690	1.2	54.0	0.61	3.3	1.8	1.9	17
Y90S-8	0.37	690	1.5	62.0	0.61	4.0	1.8	1.9	23
Y90L-8	0.55	690	2.2	63.0	0.61	4.0	1.8	2.0	25
Y100L1-8	0.75	700	2.4	71.0	0.67	4.0	1.8	2.0	30
Y100L2-8	1.1	700	3.3	73.0	0.69	5.0	1.8	2.0	32
Y112M-8	1.5	700	4.4	75.0	0.68	5.0	1.8	2.0	40
Y132S-8	2.2	710	6.0	78.0	0.71	5.5	2.0	2.3	64
Y132M-8	3	710	8.1	79.0	0.71	5.5	2.0	2.3	73
Y160M1-8	4	720	10.4	81.0	0.72	6.0	2.0	2.2	106
Y160M2-8	5.5	720	14	82.0	0.73	6.0	2.1	2.3	110
Y160L-8	7.5	720	19	83.0	0.74	5.5	2.0	2.3	132
Y180L-8	11	730	26	85.0	0.75	6.0	1.7	2.1	170
Y200L-8	15	730	35	87.0	0.75	6.0	1.8	2.2	215
Y225S-8	18.5	730	42	88.5	0.75	6.0	1.8	2.2	264
Y225M-8	22	730	49	89.0	0.77	6.0	1.8	2.2	290
Y250M-8	30	730	65	89.5	0.78	6.0	1.8	2.2	395
Y280S-8	37	740	80	90.0	0.78	6.0	1.8	2.1	500
Y280M-8	45	740	96	91.0	0.78	6.0	1.8	1.9	570
Y315S-8	55	740	116	91.5	0.79	6.5	1.6	2.0	870
Y315M-8	75	740	156	91.5	0.80	6.5	1.6	1.9	930
Y315L1-8	90	740	186	92.0	0.80	6.5	1.6	1.9	1000
Y315L2-8	110	740	223	92.5	0.81	6.3	1.6	2.0	1110
Y355M1-8	132	740	264	93.8	0.81	6.3	1.3	2.0	1660
Y355M2-8	160	740	319	94.0	0.81	6.3	1.3	2.0	1750
Y355L1-8	185	740	368	94.2	0.81	6.3	1.3	2.0	1950
Y355L2-8	200	740	398	94.3	0.81	6.3	1.3	2.0	2000
Synchronous Speed 600r/m(10-pole), 50HZ, 380 V									
Y315S-10	45	590	99.6	91.5	0.75	6.2	1.5	2.0	880
Y315M-10	55	590	121.1	92.0	0.75	6.2	1.5	2.0	950
Y315L1-10	75	590	162.1	92.5	0.76	6.2	1.5	2.0	1080
Y315L2-10	90	590	191.0	93.0	0.77	6.2	1.5	2.0	1200
Y355M1-10	110	595	229.9	93.2	0.78	6.0	1.3	2.0	1800
Y355M2-10	132	595	275.0	93.5	0.78	6.0	1.3	2.0	2000
Y355L-10	160	595	333.3	93.5	0.78	6.0	1.3	2.0	2500

Y SERIES
Y2 SERIES
Y3 SERIES
Y4 SERIES
Y5 SERIES
Y6 SERIES
Y7 SERIES
Y8 SERIES
Y9 SERIES
Y10 SERIES
Y11 SERIES
Y12 SERIES
Y13 SERIES
Y14 SERIES
Y15 SERIES
Y16 SERIES
Y17 SERIES
Y18 SERIES
Y19 SERIES
Y20 SERIES
Y21 SERIES
Y22 SERIES
Y23 SERIES
Y24 SERIES
Y25 SERIES
Y26 SERIES
Y27 SERIES
Y28 SERIES
Y29 SERIES
Y30 SERIES
Y31 SERIES
Y32 SERIES
Y33 SERIES
Y34 SERIES
Y35 SERIES
Y36 SERIES
Y37 SERIES
Y38 SERIES
Y39 SERIES
Y40 SERIES
Y41 SERIES
Y42



EXPLODED VIEW

- | | | |
|-------------------|-------------------|----------------------|
| 1.B5 Flange | 11.Name plate | 21.Brass net |
| 2.Shaft cover | 12.Wave form | 22.Brass lug |
| 3.Bolt | 13.Rear endshield | 23.Terminal board |
| 4.Spring washer | 14.Vring Oil seal | 24.Terminal box base |
| 5.Front endshield | 15.Fan | 25.Gasket |
| 6.Bearing | 16.Fan clamp | 26.Terminal box lid |
| 7.Key | 17.Fan cowl | 27.Screw |
| 8.Rotor) | 18.Washer | 28.Earth mark |
| 9.Stator | 19.Fan cowl screw | 29.Jacket |
| 10.Frame | 20.Brass washer | 30.Leach washer |



FEATURES:

Y2 series motors are totally enclosed and fan cooled(TEFC), three-phase squirrel cage induction motors, developed with new technique. They are renewal and upgrading products of Y series. The mounting dimension is conformed with the relevant requirements of IEC standards.

Y2 series motors have the merits of beautiful modeling, compact structure, low noise, high efficiency, large starting torque, easy serving, etc. Y2 series motors are widely used in many places, such as drilling machines, pumps, fans, mixer, transport machines, food machines, agriculture machines and equipments. etc.

OPERATING CONDITONS:

Ambient temperature: $-15^{\circ}\text{C} \leq 0 \leq 40^{\circ}\text{C}$

Altitude: Not exceeding 1000 meters

Rated voltage: $380\text{V} \pm 5\%$

Rated frequency: 50Hz/60Hz

Connection: Y Start connection for up to 3KW.

▲Delta connection for 4KW and above.

Duty/Rating: Continuous(S1)

Protection type: The main body of the motor IP54

The terminal box IP55

Cooling type: IC411

COOLING METHOD

IC 411

Totally-enclosed fan-cooled type

International cooling symbol

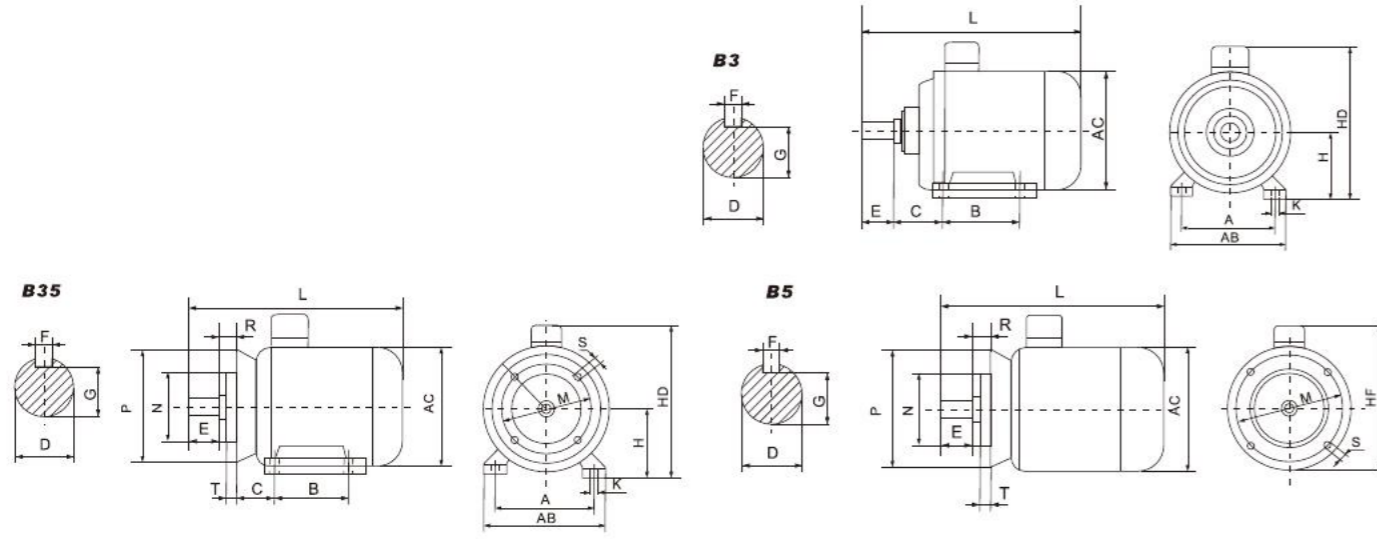
IP 5 4

Splashproof

Protecting against dust

International protection symbol

⊗ MOUNTING
INSTALLATION



⊗ INSTALLATION SIZE AND OVERALL DIMENSION

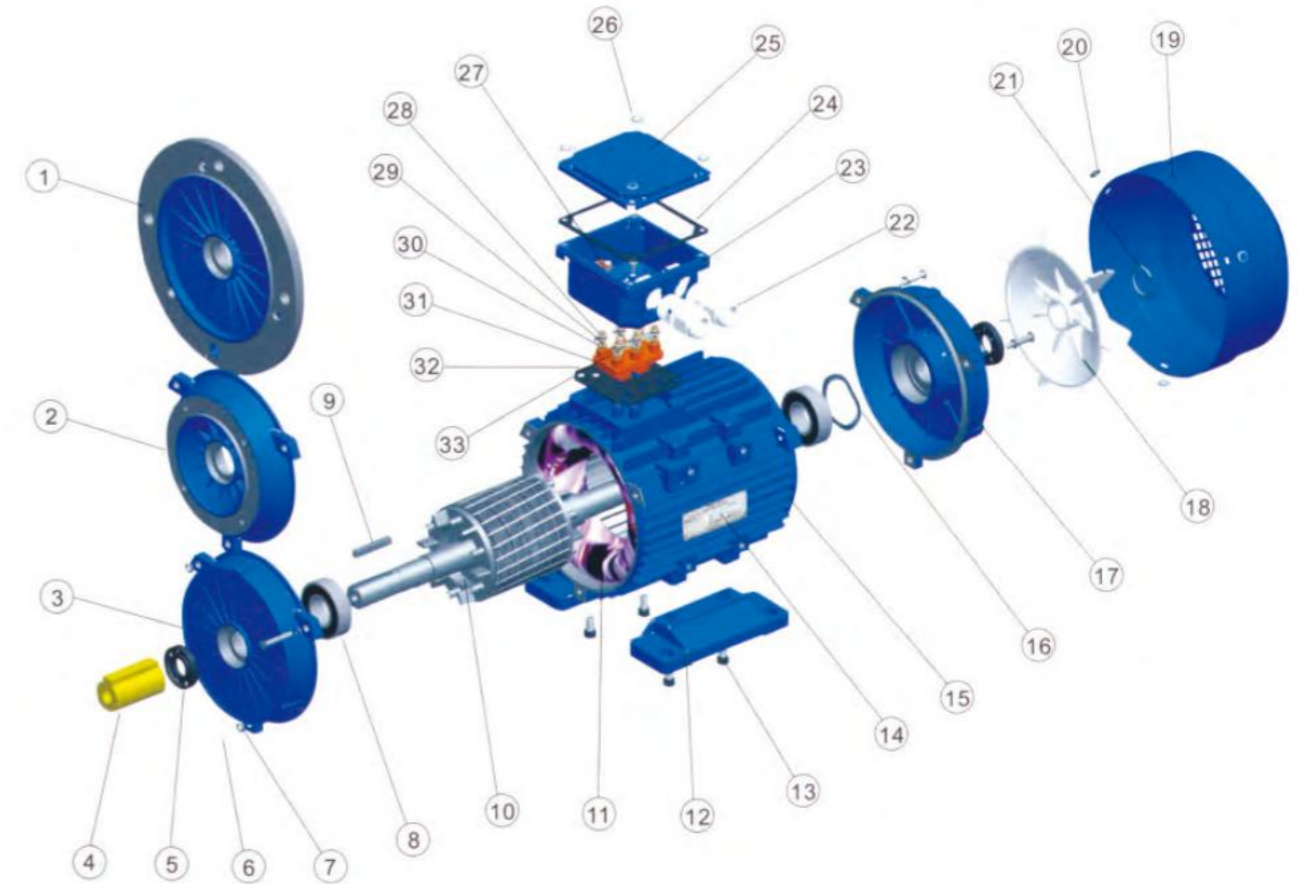
Frame size	Installation Size (mm)														Overall Dimension (mm)						
	A	B	C	D	E	F	G	H	K	M	N	P	R	S	T	AB	AC	AD	HD	HF	L
63	100	80	40	11	23	4	8.5	63	7	115	95	140	0	10	3	135	130	70	180	130	225
71	112	90	45	14	30	5	11	71	7	130	110	160	0	10	3.5	150	145	80	195	145	250
80	125	100	50	19	40	6	15.5	80	10	165	130	200	0	12	3.5	165	175	145	214	185	295
90S	140	100	56	24	50	8	20	90	10	165	130	200	0	12	3.5	180	195	155	250	195	315
90L	140	125	56	24	50	8	20	90	10	165	130	200	0	12	3.5	180	195	155	250	195	340
100L	160	140	63	28	60	8	24	100	12	215	180	250	0	15	4	205	215	180	270	245	385
112M	190	140	70	28	60	8	24	112	12	215	180	250	0	15	4	230	240	190	300	265	400
132S	216	140	89	38	80	10	33	132	12	265	230	300	0	15	4	270	275	210	345	315	470
132M	216	178	89	38	80	10	33	132	12	265	230	300	0	15	4	270	275	210	345	315	510
160M	254	210	108	42	110	12	3.7	160	15	300	250	350	0	19	5	320	330	255	420	385	615
160L	254	254	108	42	110	12	3.7	160	15	300	250	350	0	19	5	320	330	255	420	385	670
180M	279	241	121	48	110	14	42.5	180	15	300	250	350	0	19	5	355	380	280	455	430	700
180L	279	279	121	48	110	14	42.5	180	15	300	250	350	0	19	5	355	380	280	455	430	740
200L	318	305	133	55	110	16	49	200	19	350	300	400	0	19	5	375	420	305	545	480	770
225S	356	286	149	60	110	18	53	225	19	450	350	450	0	19	5	435	470	335	555	535	815
225M-2	356	311	149	55	110	16	49	225	19	450	350	450	0	19	5	435	470	335	555	535	820
225M-4,6,8	356	311	149	60	140	18	53	225	19	450	350	450	0	19	5	435	470	335	555	535	845
250M-2	406	349	168	60	140	18	53	250	24	500	450	550	0	19	5	490	510	370	615		910
250M-4,6,8	406	349	168	65	140	18	58	250	24	500	450	550	0	19	5	490	510	370	615		910
280S-2	457	368	190	65	140	18	58	280	24	500	450	550	0	19	5	550	580	410	680		985
280S-4,6,8	457	368	190	75	140	20	67.5	280	24	500	450	550	0	19	5	550	580	410	680		985
280M-2	457	419	190	65	140	18	58	280	24	500	450	550	0	19	5	550	580	410	680		1035
280M-4,6,8	457	419	190	75	140	20	67.5	280	24	500	450	550	0	19	5	550	580	410	680		1035
315S-2	508	406	216	65	140	18	58	315	28	600	550	660	0	24	6	635	645	530	845		1160
315S-4,6,8,10	508	406	216	80	170	22	71	315	28	600	550	660	0	24	6	635	645	530	845		1270
315M-2	508	457	216	65	140	18	58	315	28	600	550	660	0	24	6	635	645	530	845		1190
315M-4,6,8,10	508	457	216	80	170	22	71	315	28	600	550	660	0	24	6	635	645	530	845		1300
315L-2	508	508	216	65	140	18	58	315	28	600	550	660	0	24	6	635	645	530	845		1190
315L-4,6,8,10	508	508	216	80	170	22	71	315	28	600	550	660	0	24	6	635	645	530	845		1300
355M-2	610	560	254	75	140	20	67.5	355	28	740	680	800	0	24	6	730	710	655	1010		1500
355M-4,6,8,10	610	560	254	95	170	25	86	355	28	740	680	800	0	24	6	730	710	655	1010		1530
355L-2	610	630	254	75	140	20	67.5	355	28	740	680	800	0	24	6	730	710	655	1010		1500
355L-4,6,8,10	610	630	254	95	170	25	86	355	28	740	680	800	0	24	6	730	710	655	1010		1530

⊗ TECHNICAL DATA

Type	Rate Power (KW)	Current(A)	Speed(r/min)	Eff.(%)	P.F.(cos)	Locked Current	Locked Torque	Max. Torque	Min. Torque
						Rated Current I _{start} /I _n	Rated Torque I _{st} /I _n	Rated Torque T _{max} /T _n	Rated Torque T _{min} /T _n
380V 50Hz Synchronous Speed 3000r/min (2 Poles)									
Y2-631-2	0.18	0.53	2730	65.0	0.80	2.2	5.5	2.2	1.6
Y2-632-2	0.25	0.69	2725	68.0	0.81	2.2	5.5	2.2	1.6
Y2-711-2	0.37	0.99	2755	70.0	0.81	2.2	6.1	2.2	1.6
Y2-712-2	0.55	1.40	2790	73.0	0.82	2.2	6.1	2.3	1.6
Y2-801-2	0.75	1.83	2845	75.0	0.83	2.2	6.1	2.3	1.5
Y2-802-2	1.1	2.55	2840	77.0	0.84	2.2	7.0	2.3	1.5
Y2-90S-2	1.5	3.39	2840	79.0	0.84	2.2	7.0	2.3	1.5
Y2-90L-2	2.2	4.80	2840	81.0	0.85	2.2	7.0	2.3	1.4
Y2-100L-2	3.0	6.31	2860	83.0	0.87	2.2	7.5	2.3	1.4
Y2-112M-2	4.0	8.22	2880	85.0	0.88	2.2	7.5	2.3	1.4
Y2-132S1-2	5.5	11.2	2910	86.0	0.88	2.2	7.5	2.3	1.2
Y2-132S2-2	7.5	15.1	2900	87.0	0.88	2.2	7.5	2.3	1.2
Y2-160M1-2	11	21.3	2920	88.0	0.89	2.2	7.5	2.3	1.2
Y2-160M2-2	15	28.8	2920	89.0	0.89	2.2	7.5	2.3	1.2
Y2-160L-2	18.5	34.7	2920	90.0	0.90	2.2	7.5	2.3	1.1
Y2-180M-2	22	41.0	2930	90.0	0.90	2.0	7.5	2.3	1.1
Y2-200L1-2	30	55.5	2940	91.2	0.90	2.0	7.5	2.3	1.1
Y2-200L2-2	37	67.9	2940	92.0	0.90	2.0	7.5	2.3	1.1
Y2-225M-2	45	82.1	2960	92.3	0.90	2.0	7.5	2.3	1.0
Y2-250M-2	55	100.1	2960	92.5	0.90	2.0	7.5	2.3	1.0
Y2-280S-2	75	133.9	2960	93.0	0.90	2.0	7.5	2.3	0.9
Y2-280M-2	90	160.2	2960	93.8	0.91	2.0	7.5	2.3	0.9
Y2-315S-2	110	195.4	2970	94.0	0.91	1.8	7.1	2.2	0.9
Y2-315M-2	132	233.2	2970	94.5	0.91	1.8	7.1	2.2	0.9
Y2-315L1-2	160	279.3	2970	94.6	0.92	1.8	7.1	2.2	0.9
Y2-315L2-2	200	347.7	2970	94.8	0.92	1.8	7.1	2.2	0.8
Y2-355M-2	250	432.3	2970	95.3	0.92	1.6	7.1	2.2	0.8
Y2-355L-2	315	543.0	2970	95.6	0.92	1.6	7.1	2.2	0.8
380V 50Hz Synchronous Speed 1500r/min (4 Poles)									
Y2-631-4	0.12	0.44	1315	57.0	0.72	2.1	4.4	2.2	1.7
Y2-632-4	0.18	0.62	1315	60.0	0.73	2.1	4.4	2.2	1.7
Y2-711-4	0.25	0.79	1345	65.0	0.74	2.1	5.2	2.2	1.7
Y2-712-4	0.37	1.12	1340	67.0	0.75	2.1	5.2	2.2	1.7
Y2-801-4	0.55	1.57	1390	71.0	0.75	2.4	5.2	2.3	1.7
Y2-802-4	0.75	2.03	1380	73.0	0.76	2.3	6.0	2.3	1.6
Y2-90S-4	1.1	2.86	1390	75.0	0.77	2.3	6.0	2.3	1.6
Y2-90L-4	1.5	3.70	1390	78.0	0.79	2.3	6.0	2.3	1.6
Y2-100L1-4	2.2	5.16	1410	80.0	0.81	2.3	7.0	2.3	1.5
Y2-100L2-4	3.0	6.78	1410	82.0	0.82	2.3	7.0	2.3	1.5
Y2-112M-4	4.0	8.82	1435	84.0	0.82	2.3	7.0	2.3	1.5
Y2-132S-4	5.5	11.7	1445	85.0	0.83	2.3	7.0	2.3	1.4
Y2-132M-4	7.5	15.6	1445	87.0	0.84	2.3	7.0	2.3	1.4
Y2-160M-4	11	22.3	1450	88.0	0.84	2.2	7.0	2.3	1.4
Y2-160L-4	15	30.1	1450	89.0	0.85	2.2	7.5	2.3	1.4
Y2-180M-4	18.5	36.5	1460	90.5	0.86	2.2	7.5	2.3	1.2
Y2-180L-4	22	43.1	1460	91.0	0.86	2.2	7.5	2.3	1.2
Y2-200L-4	30	57.6	1460	92.0	0.86	2.2	7.2	2.3	1.2
Y2-225S-4	37	69.9	1470	92.5	0.87	2.2	7.2	2.3	1.2
Y2-225M-4	45	84.5	1470	92.8	0.87	2.2	7.2	2.3	1.1
Y2-250M-4	55	103.1	1470	93.0	0.87	2.2	7.2	2.3	1.1
Y2-280S-4	75	139.6	1470	93.8	0.87	2.2	7.2	2.3	1.0
Y2-280M-4	90	166.9	1470	94.2	0.87	2.2	7.2	2.3	1.0
Y2-315S-4	110	201	1480	94.5	0.88	2.1	6.9	2.2	1.0
Y2-315M-4	132	240.4	1480	94.8	0.88	2.1	6.9	2.2	1.0
Y2-315L1-4	160	287.8	1480	94.9	0.89	2.1	6.9	2.2	1.0
Y2-315L2-4	200	358.6	1480	95.0	0.89	2.1	6.9	2.2	0.9
Y2-355M-4	250	441.9	1480	95.3	0.90	2.1	6.9	2.2	0.9
Y2-355L-4	315	555.1	1480	95.6	0.90	2.1	6.9	2.2	0.8

TECHNICAL DATA

Type	Rate Power (KW)	Current(A)	Speed(r/min)	Eff.(%)	P.F.(cos)	Locked Current Rated Current Tstar/Tn	Locked Torque Rated Torque Ist/In	Max. Torque Rated Torque Tmin/Tn	Min. Torque Rated Torque Tmin/Tn
380V 50Hz Synchronous Speed 1000r/min (6 Poles)									
Y2-711-6	0.18	0.74	860	56.0	0.66	1.9	4.0	2.0	1.5
Y2-712-6	0.25	0.95	860	59.0	0.68	1.9	4.0	2.0	1.5
Y2-801-6	0.37	1.30	885	62.0	0.70	1.9	4.7	2.0	1.5
Y2-802-6	0.55	1.79	885	65.0	0.72	1.9	4.7	2.1	1.5
Y2-90S-6	0.75	2.26	910	69.0	0.72	2.0	5.5	2.1	1.5
Y2-90L-6	1.1	3.14	910	72.0	0.73	2.0	5.5	2.1	1.3
Y2-100L-6	1.5	3.95	920	76.0	0.75	2.0	5.5	2.1	1.3
Y2-112M-6	2.2	5.57	935	79.0	0.76	2.0	6.5	2.1	1.3
Y2-132S-6	3.0	7.40	965	81.0	0.76	2.1	6.5	2.1	1.3
Y2-132M1-6	4.0	9.63	965	82.0	0.76	2.1	6.5	2.1	1.3
Y2-132M2-6	5.5	12.9	965	84.0	0.77	2.1	6.5	2.1	1.3
Y2-160M-6	7.5	17.0	970	86.0	0.77	2.0	6.5	2.1	1.3
Y2-160L-6	11	24.3	970	87.5	0.78	2.0	6.5	2.1	1.2
Y2-180L-6	15	31.6	970	89.0	0.81	2.0	7.0	2.1	1.2
Y2-200L1-6	18.5	38.1	970	90.0	0.81	2.1	7.0	2.1	1.2
Y2-200L2-6	22	44.5	970	90.0	0.83	2.1	7.0	2.1	1.2
Y2-225M-6	30	58.6	970	91.5	0.84	2.0	7.0	2.1	1.2
Y2-250M-6	37	71.1	970	92.0	0.86	2.1	7.0	2.1	1.2
Y2-280S-6	45	85.9	970	92.5	0.86	2.1	7.0	2.0	1.1
Y2-280M-6	55	104.7	970	92.8	0.86	2.1	7.0	2.0	1.1
Y2-315S-6	75	141.7	980	93.5	0.86	2.0	7.0	2.0	1.0
Y2-315M-6	90	169.5	980	93.8	0.86	2.0	7.0	2.0	1.0
Y2-315L1-6	110	206.7	980	94.0	0.86	2.0	6.7	2.0	1.0
Y2315L2-6	132	244.7	980	94.2	0.87	2.0	6.7	2.0	1.0
Y2-355M1-6	160	291.4	980	94.5	0.88	1.9	6.7	2.0	1.0
Y2-355M2-6	200	363.5	980	94.5	0.88	1.9	6.7	2.0	0.9
Y2-355L-6	250	453.4	980	94.9	0.88	1.9	6.7	2.0	0.9
380V 50Hz Synchronous Speed 750r/min (8 Poles)									
Y2-801-8	0.18	0.88	645	51.0	0.61	1.8	3.3	1.9	1.3
Y2-802-8	0.25	1.15	645	54.0	0.61	1.8	3.3	1.9	1.3
Y2-90S-8	0.37	1.49	670	62.0	0.61	1.8	4.0	1.9	1.3
Y2-90L-8	0.55	2.17	670	63.0	0.61	1.8	4.0	2.0	1.3
Y2-100L1-8	0.75	2.43	680	71.0	0.67	1.8	4.0	2.0	1.3
Y2-100L2-8	1.1	2.41	680	73.0	0.69	1.8	5.0	2.0	1.2
Y2-112M-8	1.5	4.47	690	75.0	0.69	1.8	5.0	2.0	1.2
Y2-132S-8	2.2	6.04	705	78.0	0.71	1.8	6.0	2.0	1.2
Y2-132M-8	3.0	7.90	705	79.0	0.73	1.8	6.0	2.0	1.2
Y2-160M1-8	4.0	10.3	710	81.0	0.73	1.9	6.0	2.0	1.2
Y2-160M2-8	5.5	13.6	710	83.0	0.74	2.0	6.0	2.0	1.2
Y2-160L-8	7.5	17.9	710	85.5	0.75	2.0	6.0	2.0	1.2
Y2-180L-8	11	25.3	720	87.5	0.76	2.0	6.6	2.0	1.1
Y2-200L-8	15	34.1	720	88.0	0.76	2.0	6.6	2.0	1.1
Y2-225S-8	18.5	40.6	720	90.0	0.76	1.9	6.6	2.0	1.1
Y2-225M-8	22	47.4	720	90.5	0.78	1.9	6.6	2.0	1.1
Y2-250M-8	30	63.4	720	91.0	0.79	1.9	6.6	2.0	1.1
Y2-280S-8	37	77.2	730	91.5	0.79	1.9	6.6	2.0	1.1
Y2-280M-8	45	92.9	730	92.0	0.79	1.9	6.6	2.0	1.0
Y2-315S-8	55	111.2	740	92.8	0.81	1.8	6.6	2.0	1.0
Y2-315M-8	75	151.3	740	93.0	0.81	1.8	6.6	2.0	0.9
Y2-315L1-8	90	177.8	740	93.8	0.82	1.8	6.6	2.0	0.9
Y2-315L2-8	110	216.8	740	94.0	0.82	1.8	6.4	2.0	0.9
Y2-315M1-8	132	260.2	740	93.7	0.82	1.8	6.4	2.0	0.9
Y2-315M2-8	160	309.9	740	94.2	0.82	1.8	6.4	2.0	0.9
Y2-315L-8	200	386.2	740	94.5	0.83	1.8	6.4	2.0	0.9
380V 50Hz Synchronous Speed 600r/min (10 Poles)									
Y2-315S-10	45	99.6	565	91.5	0.75	1.5	6.2	2.0	0.8
Y2-315M-10	55	121.1	565	92.0	0.75	1.5	6.2	2.0	0.8
Y2-315L1-10	75	162.1	565	92.5	0.76	1.5	6.2	2.0	0.8
Y2-315L2-10	90	191.0	565	93.0	0.77	1.5	6.2	2.0	0.8
Y2-355M1-10	110	229.9	570	93.2	0.78	1.3	6.0	2.0	0.8
Y2-355M2-10	132	275.0	570	93.5	0.78	1.3	6.0	2.0	0.8
Y2-355L-10	160	333.3	570	93.5	0.78	1.3	6.0	2.0	0.8



EXPLODED VIEW

- 1.B5 Flange
- 2.B14Front endshield
- 3.Front endshield
- 4.Shaft cover
- 5.Spring washer
- 6.Vring Oil seal
- 7.Bolt
- 8.Bearing
- 9.Key
- 10.Rotor
- 11.Stator
- 12.Pedstal
- 13.Pedstal bolt
- 14.Name plate
- 15.Frame
- 16.Wave form
- 17.Rear endshield
- 18.Fan
- 19.Fan cowl
- 20.Fan cowl screw
- 21.Fanclamp
- 22.PG
- 23.Terminal box base
- 24.Gasket
- 25.Terminal box lid
- 26.Screw
- 27.Earth mark
- 28.Bras washer
- 29.Deduction cap
- 30.Bras net
- 31.Terminal board
- 32.Leather washer
- 33.Bras lug

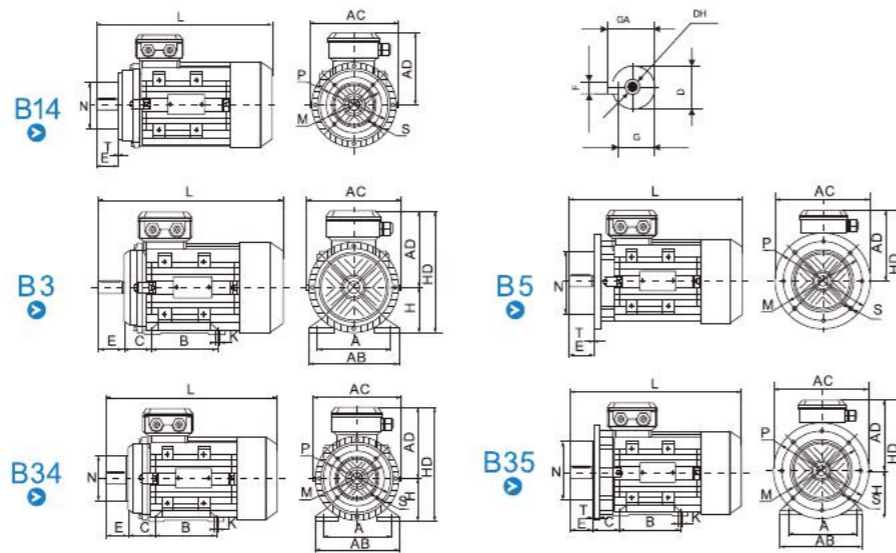
FEATURES:

The MS series aluminum housing three-phase asynchronous motors are the latest design and are made of selected quality materials and conform to the international IEC standard. MS motors have a very safe and reliable performance, are attractive in appearance and can be easily maintained. They have low noise with little vibration but at the same time are light weight and of simple construction. The MS series motors can be used for general electric motor applications.



OPERATING CONDITIONS:

Ambient temperature: $-15^{\circ}\text{C} \leq 0 \leq 40^{\circ}\text{C}$
 Altitude: Not exceeding 1000 meters
 Rated voltage: 380V, 220-760V is available
 Rated frequency: 50Hz/60Hz
 Insulation class: Class B/F/H
 Protection type: IP54, IP55
 Cooling type: IC411



INSTALLATION SIZE AND OVERALL DIMENSION

Frame Size	Installation Size										Installation Size for B14					Installation Size for B5					Overall Dimensions				
	A	B	C	D	E	F	G	H	K	DH*	M	N	P	S	T	M	N	P	S	T	AB	AC	AD	HD	L
56	90	71	36	9	20	3	7.2	56	5.8	-	65	50	80	M5	2.5	100	80	120	7	3.0	110	110	78	134	201
63	100	80	40	11	23	4	8.5	63	7	M5	75	60	90	M5	2.5	115	95	140	10	3.0	125	116	100	162	223
71	112	90	45	14	30	5	11	71	7	M5	85	70	105	M6	2.5	130	110	160	10	3.5	140	134	109	180	248
80	125	100	50	19	40	6	16	80	10	M6	100	80	120	M6	3.0	165	130	200	12	3.5	158	144	116	196	277
90S	140	100	56	24	50	8	20	90	10	M8	115	95	140	M8	3.0	165	130	200	12	3.5	175	159	120	210	314
90L	140	125	56	24	50	8	24	90	10	M8	115	95	140	M8	3.0	165	130	200	12	3.5	175	159	120	210	334
100	160	140	63	28	60	8	24	100	12	M10	130	110	160	M8	3.5	215	180	250	15	4.0	200	191	153	255	381
112	190	140	70	28	60	8	24	112	12	M10	130	110	160	M8	3.5	215	180	250	15	4.0	225	212	164	280	406
132S	216	140	89	38	80	10	33	132	12	M12	165	130	200	M10	4.0	265	230	300	15	4.0	260	260	200	314	473
132M	216	178	89	38	80	10	33	132	12	M12	165	130	200	M10	4.0	265	230	300	15	4.0	260	260	200	314	505
160M	254	210	108	42	110	12	37	160	15	M16	215	180	250	M12	4.0	300	250	350	19	5.0	320	330	255	383	606
160L	254	254	108	42	110	12	37	160	15	M16	215	180	250	M12	4.0	300	250	350	19	5.0	320	330	255	383	650

DH*: Available only on request

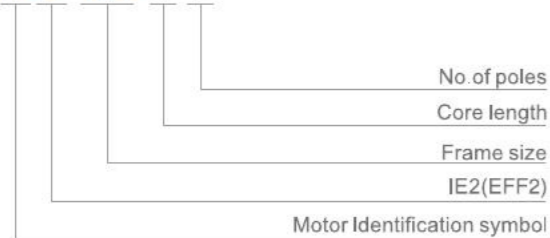
TECHNICAL DATA

Type	Rate Power (KW)	Current(A)	P.F.(cos)	Eff.(%)	Speed (r/min)	Locked Current Rated Current I _{start} /I _n	Locked Torque Rated Torque T _{start} /T _n	Max. Torque Rated Torque T _{max} /T _n	N.W.kg	QTY/20'	Packing size (mm)
380V 50Hz Synchronous Speed 3000r/min (2 Poles)											
MS561-2	0.09	0.30	0.76	60	2750	2.3	6.0	2.4	3.6	6000	220X120X165
MS562-2	0.12	0.37	0.78	63	2750	2.3	6.0	2.4	4.0	5000	220X120X165
MS631-2	0.18	0.53	0.80	65	2780	2.3	6.0	2.4	4.1	4400	260X150X165
MS632-2	0.25	0.69	0.81	68	2780	2.3	6.0	2.4	4.5	4400	260X150X165
MS711-2	0.37	0.99	0.81	70	2800	2.3	6.0	2.4	5.6	3000	285X170X200
MS712-2	0.55	1.40	0.82	73	2800	2.3	6.0	2.4	6.2	3000	285X170X200
MS801-2	0.75	1.83	0.83	75	2825	2.3	6.0	2.4	9.1	2200	330X190X215
MS802-2	1.1	2.58	0.84	77	2825	2.3	6.5	2.4	10	2000	330X190X215
MS90S-2	1.5	3.43	0.84	79	2840	2.3	6.5	2.4	12	1500	375X210X230
MS90L-2	2.2	4.85	0.85	81	2840	2.3	6.5	2.4	13.2	1500	375X210X230
MS100L-2	3	6.31	0.87	83	2880	2.3	7.0	2.4	22	960	400X225X320
MS112M-2	4	8.12	0.88	85	2890	2.3	7.0	2.4	30	700	420X255X335
MS132S1-2	5.5	11.0	0.88	86	2900	2.3	7.0	2.4	43	460	515X345X375
MS132S2-2	7.5	14.9	0.88	87	2900	2.3	7.0	2.4	49	450	515X345X375
MS160M1-2	11	21.3	0.89	88	2930	2.3	7.0	2.4	69	190	700X450X420
MS160M2-2	15	28.8	0.89	89	2930	2.3	7.0	2.4	78	190	700X450X420
MS160L-2	18.5	34.7	0.90	90	2930	2.3	7.0	2.4	81	190	700X450X420
380V 50Hz Synchronous Speed 1500r/min (4 Poles)											
MS561-4	0.06	0.27	0.68	50	1300	2.2	5.5	2.3	3.6	6000	220X120X165
MS562-4	0.09	0.36	0.70	54	1300	2.2	5.5	2.3	4	5000	220X120X165
MS631-4	0.12	0.44	0.72	57	1330	2.2	5.5	2.3	4	4400	260X150X165
MS632-4	0.18	0.62	0.73	60	1330	2.2	5.5	2.3	4.5	4400	260X150X165
MS711-4	0.25	0.79	0.74	65	1360	2.2	5.5	2.3	5.6	3000	285X170X160
MS712-4	0.37	1.12	0.75	67	1360	2.2	5.5	2.3	6	3000	285X170X160
MS801-4	0.55	1.57	0.75	71	1380	2.3	6.0	2.4	9	2200	320X190X215
MS802-4	0.75	2.05	0.76	73	1380	2.3	6.0	2.4	10	2200	320X190X215
MS90S-4	1.1	2.89	0.77	75	1390	2.3	6.0	2.4	12	1500	375X210X230
MS90L-4	1.5	3.70	0.79	78	1390	2.3	6.0	2.4	13.2	1500	375X210X230
MS100L1-4	2.2	5.16	0.81	80	1410	2.3	7.0	2.4	21	960	400X225X320
MS100L2-4	3	6.78	0.82	82	1410	2.3	7.0	2.4	24.8	950	400X225X320
MS112M-4	4	8.82	0.82	84	1435	2.3	7.0	2.4	29	700	420X255X290
MS132S-4	5.5	11.8	0.83	85	1445	2.3	7.0	2.4	44	460	510X345X375
MS132M-4	7.5	15.6	0.84	87	1445	2.3	7.0	2.4	54	450	520X345X375
MS160M-4	11	22.3	0.84	88	1450	2.2	7.0	2.3	71	190	700X450X420
MS160L-4	15	30.1	0.85	89	1450	2.2	7.0	2.3	79	190	700X450X420
380V 50Hz Synchronous Speed 1000r/min (6 Poles)											
MS711-6	0.18	0.74	0.66	56	900	2.0	5.5	2.2	5.4	3000	285X170X200
MS712-6	0.25	0.95	0.68	59	900	2.0	5.5	2.2	6.0	3000	285X170X200
MS801-6	0.37	1.30	0.70	62	900	2.0	5.5	2.2	9	2200	320X190X215
MS802-6	0.55	1.79	0.72	65	900	2.0	5.5	2.2	11	2200	320X190X215
MS90S-6	0.75	2.29	0.72	69	910	2.1	5.5	2.2	13	1500	375X210X235
MS90L-6	1.1	3.18	0.73	72	910	2.1	5.5	2.2	14.2	1500	375X210X235
MS100L-6	1.5	3.95	0.76	76	940	2.1	5.5	2.2	21	960	400X225X320
MS112M-6	2.2	5.57	0.76	79	940	2.2	6.5	2.3	27	700	420X255X335
MS132S-6	3	7.40	0.76	81	960	2.2	6.5	2.3	44	460	520X345X375
MS132M1-6	4	9.75	0.76	82	960	2.2	6.5	2.3	52	450	520X345X375
MS132M2-6	5.5	12.9	0.77	84	960	2.2	6.5	2.3	58	450	520X345X375
MS160M-6	7.5	17.0	0.77	86	970	2.2	6.5	2.3	70	190	700X450X420
MS160L-6	11	24.2	0.78	87	970	2.2	6.5	2.3	79	190	700X450X420
380V 50Hz Synchronous Speed 750r/min (8 Poles)											
MS801-8	0.18	0.88	0.61	51	630	1.8	4.0	1.9	8.8	2200	320X190X215
MS802-8	0.25	1.15	0.61	54	640	1.8	4.0	1.9	11	2200	320X190X215
MS90S-8	0.37	1.49	0.61	62	660	1.8	4.0	1.9	13	1500	375X210X235
MS90L-8	0.55	2.18	0.61	63	660	1.8	4.0	2.0	14	1500	375X210X235
MS100L1-8	0.75	2.53	0.67	71	690	1.8	4.0	2.0	20	960	400X225X320
MS100L2-8	1.1	3.32	0.69	73	690	1.8	5.0	2.0	26	960	400X225X320
MS112M-8	1.5	4.50	0.69	75	680	1.8	5.0	2.0	43	700	420X255X335
MS132S-8	2.2	6.00	0.71	78	710	1.8	6.0	2.0	51	450	520X345X375
MS132M-8	3.0	7.90	0.73	79	710	1.8	6.0	2.0	57	450	520X345X375
MS160M1-8	4.0	10.3	0.73	81	720	1.9	6.0	2.0	69	190	700X450X420
MS160M2-8	5.5	13.6	0.74	83	720	2.0	6.0	2.0	78	190	700X450X420
MS160L-8	7.5	17.8	0.75	85	720	2.0	6.0	2.0	81	190	700X450X420

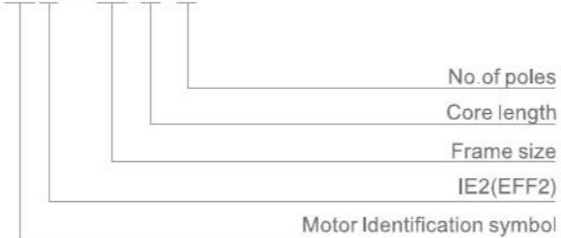


IE2 DESIGNATION

IE2 112 M-4



IE2 200L-2



MOTOR IDENTIFICATION SYMBOL

IP -5 -5

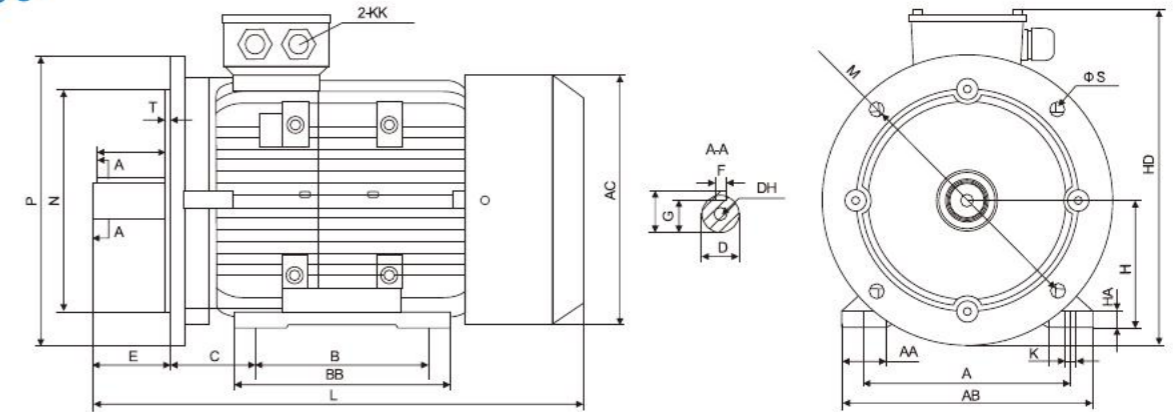


IC -411



MOUNTING INSTALLATION

B35



INSTALLATION SIZE AND OVERALL DIMENSION

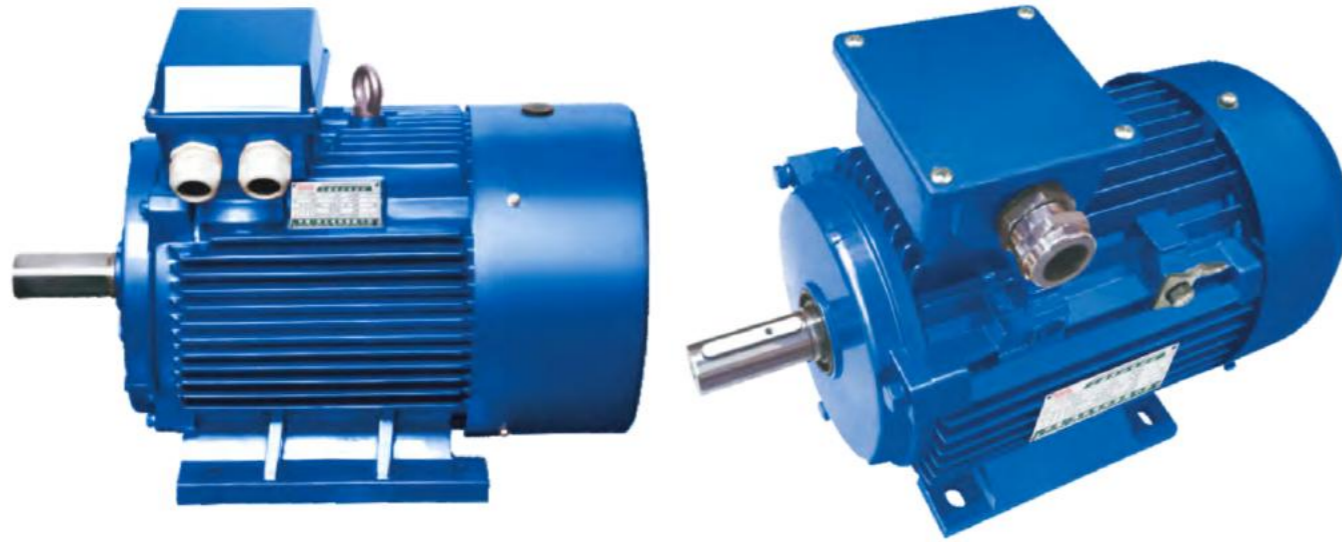
Frame size	POLES	A	A2	B	C	D	E	F	G	H	K	M	N	P	S	T	FLANGE HOLES	AB	AC	AD	HD	HL	DH*
80M	2 4 6	125	62.5	100	50	19	40	6	16	80	10	165	130	200	12	3.5	4	153	157	140	220	295	M6×16
90S	2 4 6	140	70	100	56	24	50	8	20	90	10	165	130	200	12	3.5	4	177	177	160	240	327	M8×19
90L	2 4 6	140	72	125	56	24	50	8	20	90	10	165	130	200	12	3.5	4	177	177	160	240	357	M8×19
100L	2 4 6	160	80	140	63	28	60	8	24	100	12	215	180	250	15	4	4	196	197	172	267	403	M10×22
112M	2 4 6	190	95	140	70	28	60	8	24	112	12	215	180	250	15	4	4	226	219	190	289	430	M10×22
132S	2 4 6	216	108	140	30	38	30	10	33	132	12	265	230	300	15	4	4	260	258	210	328	460	M12×28
132M	2 4 6	216	108	178	30	38	80	10	33	132	12	265	230	300	15	4	4	260	258	210	328	499	M12×28
160M	2 4 6	254	127	210	108	42	110	12	37	160	15	300	250	350	19	5	4	314	315	255	416	613	M16×36
160L	2 4 6	254	127	254	108	42	110	12	37	160	15	300	250	350	19	5	4	314	315	255	416	658	M16×36
180M	2 4 6	279	140	241	121	48	112	14	40	180	15	300	250	350	19	5	4	349	355	280	451	698	M16×36
180L	2 4 6	279	140	279	121	48	110	14	43	180	15	300	250	350	19	5	4	349	355	280	451	734	M16×36
200L	2 4 6	318	159	305	133	55	110	16	49	200	19	350	300	400	19	5	4	388	397	305	505	776	M20×42
225S	4	356	178	286	149	60	140	18	53	225	19	400	350	450	19	5	4	431	445	335	550	810	M20×42
225M	2	356	178	311	149	55	110	16	49	225	19	400	350	450	19	5	8	431	445	335	550	809	M20×42
	4 6	406	178	311	149	60	142	18	53	225	19	400	350	450	19	5	8	431	445	335	550	839	M20×42
250M	2	406	203	349	168	60	140	18	53	250	24	500	450	550	19	5	8	484	484	370	613	925	M20×42
	4 6	457	203	349	168	65	140	18	58	250	24	500	450	550	19	5	8	484	484	370	613	925	M20×42
280S	2	457	229	368	190	65	140	18	58	280	24	500	450	550	19	5	8	542	546	410	670	991	M20×42
	4 6	457	229	368	190	75	140	20	68	280	24	500	450	550	19	5	8	542	546	410	670	991	M20×42
280M	2	457	229	419	190	65	140	18	58	280	24	500	450	550	19	5	8	542	546	410	670	1046	M20×42
	4 6	508	229	419	190	75	140	20	60	280	24	500	450	550	19	5	8	542	546	410	670	1046	M20×42
315S	2	508	254	406	216	65	140	18	58	315	28	600	550	660	24	6	8	628	620	530	855	1185	M20×42
	4 6	508	254	406	216	80	170	22	71	315	28	600	550	660	24	6	8	628	620	530	855	1220	M20×42
315M	2	508	254	457	216	65	140	18	58	315	28	600	550	660	24	6	8	628	620	530	855	1290	M20×42
	4 6	508	254	457	216	80	170	22	71	315	28	600	550	660	24	6	8	628	620	530	855	1325	M20×42
315L	2	508	254	508	216	65	140	18	58	315	28	600	550	660	24	6	8	628	620	530	855	1290	M20×42
	4 6	580	254	508	216	80	170	22	71	315	28	600	550	660	24	6	8	628	620	530	855	1325	M20×42
355M	2	610	305	560	254	75	140	20	68	355	28	740	680	800	24	6	8	726	700	655	1002	1484	M20×42
	4 6	610	305	560	254	95	170	25	86	355	28	740	680	800	24	6	8	726	700	655	1002	1514	M20×42
355L	2	610	305	630	254	75	140	20	68	355	28	740	680	800	24	6	8	726	700	655	1002	1484	M20×42
	4 6	610	305	630	254	95	170	25	86	355	28	740	680	800	24	6	8	726	700	655	1002	1514	M20×42

TECHNICAL DATA

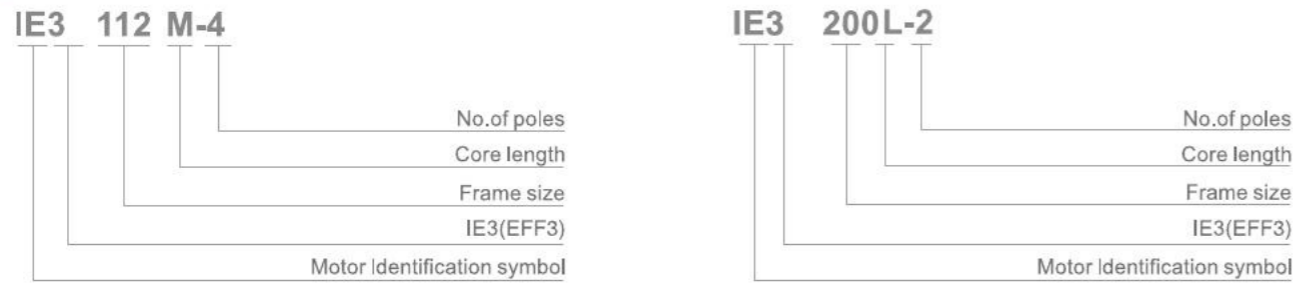
Frame size	Rated power	Full load speed in revolutions per minute	Full load current at rated voltage	Efficiency	Power factor	Direct on line starting torque ratio	Direct on line starting current ratio	Direct on line pull out torque ratio	Mean sound pressure level @ 1m on no load	Voltage
Type	Output (kW)	Speed (r/min)	Amps (A)	EFF. (%)	P.F. (cosφ)	LRT/RLT	LRA/RLA	BDT/RLT	Noise LwdB (A)	Voltage (V)
IE2-80M1-2	0.75	2850	1.7	77.4	0.82	2.3	6.8	2.3	62	400
IE2-80M2-2	1.1	2870	2.4	79.6	0.83	2.3	7.1	2.3	62	400
IE2-90S-2	1.5	2880	3.2	81.3	0.84	2.3	7.3	2.3	67	400
IE2-90L-2	2.2	2880	4.5	83.2	0.85	2.3	7.6	2.3	67	400
IE2-100L1-2	3	2880	5.9	84.6	0.87	2.2	7.8	2.3	74	400
IE2-112M-2	4	2900	7.6	85.8	0.88	2.3	8.1	2.3	77	400
IE2-132S1-2	5.5	2910	10.4	87	0.88	2.2	8.2	2.3	79	400
IE2-132S2-2	7.5	2910	13.8	88.1	0.89	2.2	7.8	2.3	79	400
IE2-160M1-2	11	2940	20	89.4	0.89	2.2	7.9	2.3	81	400
IE2-160M2-2	15	2940	26.9	90.3	0.89	2.2	8	2.3	81	400
IE2-160L-2	18.5	2940	33	90.9	0.89	2.2	8	2.3	81	400
IE2-180M-2	22	2950	39.1	91.3	0.89	2.2	8.1	2.3	83	400
IE2-200L1-2	30	2960	52.9	92	0.89	2	7.5	2.3	84	400
IE2-200L2-2	37	2960	64.9	92.5	0.89	2	7.5	2.3	84	400
IE2-225M-2	45	2960	78.6	92.9	0.89	2.2	7.5	2.3	86	400
IE2-250M-2	55	2970	96	93.2	0.89	2.2	7.6	2.3	89	400
IE2-280S-2	75	2975	130	93.8	0.89	2	6.9	2.3	91	400
IE2-280M-2	90	2975	155	94.1	0.89	2	6.9	2.3	91	400
IE2-315S-2	110	2975	187	94.3	0.9	2	7	2.2	92	400
IE2-315M-2	132	2975	224	94.6	0.9	2	7	2.2	92	400
IE2-315L1-2	160	2975	268	94.8	0.91	2	7.1	2.2	92	400
IE2-315L2-2	200	2975	334	95	0.91	2	7.1	2.2	92	400
IE2-355M-2	250	2980	418	95	0.91	1.6	7.1	2.2	100	400
IE2-355L-2	315	2980	526	95	0.91	1.6	7.2	2.2	100	400
IE2-80M2-4	0.75	1420	1.8	79.6	0.76	2.3	6.4	2.3	56	400
IE2-90S-4	1.1	1420	2.6	81.4	0.77	2.3	6.6	2.3	59	400
IE2-90L-4	1.5	1420	3.5	82.8	0.78	2.3	6.7	2.3	59	400
IE2-100L1-4	2.2	1440	4.7	84.3	0.8	2.3	7.3	2.3	64	400
IE2-100L2-4	3	1440	6.2	85.5	0.81	2.3	7.5	2.3	64	400
IE2-112M-4	4	1445	8.1	86.6	0.81	2.3	7.5	2.3	65	400
IE2-132S-4	5.5	1450	11.1	87.7	0.82	2	7.5	2.3	71	400
IE2-132M-4	7.5	1450	14.7	88.7	0.83	2	7.3	2.3	71	400
IE2-160M-4	11	1470	21.3	89.8	0.83	2.2	7.4	2.3	73	400
IE2-160L-4	15	1470	28.4	90.6	0.84	2.2	7.5	2.3	73	400
IE2-180M-4	18.5	1470	34.4	91.2	0.85	2.2	7.6	2.3	76	400

TECHNICAL DATA

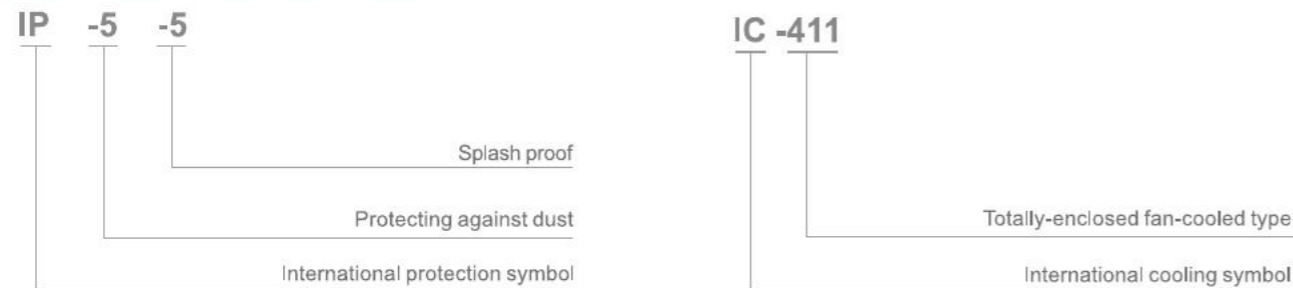
Frame size	Rated power	Full load speed in revolutions per minute	Full load current at rated voltage	Efficiency	Power factor	Direct on line starting torque ratio	Direct on line starting current ratio	Direct on line pull out torque ratio	Mean sound pressure level @ 1m on no load	Voltage
Type	Output (kW)	Speed (r/min)	Amps (A)	EFF. (%)	P.F. (cosφ)	LRT/RLT	LRA/RLA	BDT/RLT	Noise LwdB (A)	Voltage (V)
IE2-180L-4	22	1470	40.8	91.6	0.85	2.2	7.7	2.3	76	400
IE2-200L-4	30	1470	55.2	92.3	0.85	2.2	7.1	2.3	76	400
IE2-225S-4	37	1480	67	92.7	0.86	2.2	7.3	2.3	78	400
IE2-225M-4	45	1480	81.1	93.1	0.86	2.2	7.3	2.3	78	400
IE2-250M-4	55	1480	99	93.5	0.86	2.2	7.3	2.3	79	400
IE2-280S-4	75	1480	132	94	0.87	2.2	6.8	2.3	80	400
IE2-280M-4	90	1480	157	94.2	0.88	2.2	6.9	2.3	80	400
IE2-315S-4	110	1480	189	94.5	0.89	2.1	6.9	2.2	88	400
IE2-315M-4	132	1480	226	94.7	0.89	2.1	6.9	2.2	88	400
IE2-315L1-4	160	1480	270	94.9	0.9	2.2	6.9	2.2	88	400
IE2-315L2-4	200	1480	337	95.1	0.9	2.1	6.9	2.2	88	400
IE2-355M-4	250	1490	422	95.1	0.9	2.1	6.9	2.2	95	400
IE2-355L-4	315	1490	531	95.1	0.9	2.1	6.9	2.2	95	400
IE2-90S-6	0.75	930	2	75.9	0.71	2	5.8	2.1	57	400
IE2-90L-6	1.1	930	2.8	78.1	0.72	2	5.9	2.1	57	400
IE2-100L1-6	1.5	930	3.7	79.8	0.72	2	5.9	2.1	61	400
IE2-112M-6	2.2	945	5.4	81.8	0.72	2.1	6.2	2.1	65	400
IE2-132S-6	3	960	7.1	83.3	0.72	2	6.4	2.1	69	400
IE2-132M1-6	4	965	9.2	84.6	0.74	2	6.6	2.1	69	400
IE2-132M2-6	5.5	965	12.3	86	0.75	2	6.8	2.1	69	400
IE2-160M-6	7.5	970	15.9	87.2	0.78	2.1	6.8	2.1	73	400
IE2-160L-6	11	970	22.7	88.7	0.79	2.1	6.9	2.1	73	400
IE2-180L-6	15	980	29.8	89.7	0.81	2	7.3	2.1	73	400
IE2-200L1-6	18.5	980	36.5	90.4	0.81	2.1	7.2	2.1	73	400
IE2-200L2-6	22	980	43.1	90.9	0.81	2.1	7.3	2.1	73	400
IE2-225M-6	30	980	57.6	91.7	0.82	2	6.8	2.1	74	400
IE2-250M-6	37	980	69.8	92.2	0.83	2.1	7	2.1	76	400
IE2-280S-6	45	980	82	92.7	0.85	2.1	7.2	2	78	400
IE2-280M-6	55	980	100	93.1	0.85	2.1	7.2	2	78	400
IE2-315S-6	75	990	136	93.7	0.85	2	6.5	2	83	400
IE2-315M-6	90	990	163	94	0.85	2	6.6	2	83	400
IE2-315L1-6	110	990	198	94.3	0.85	2	6.6	2	83	400
IE2-315L2-6	132	990	234	94.6	0.86	2	6.6	2	83	400
IE2-315L2-6	160	990	283	94.8	0.86	1.9	6.7	2	85	400
IE2-355M2-6	200	990	353	95	0.86	2	6.8	2	85	400
IE2-355L-6	250	990	442	95	0.86	2	6.8	2	85	400



IE3 DESIGNATION

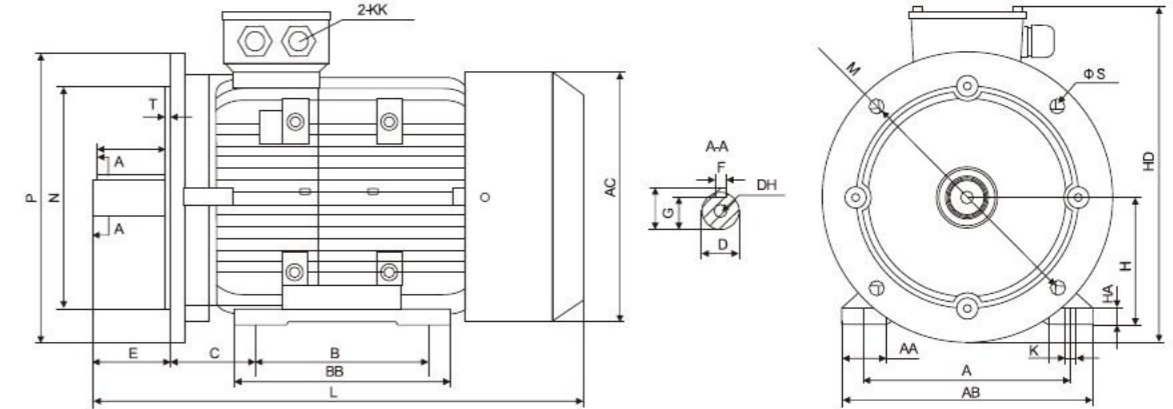


MOTOR IDENTIFICATION SYMBOL



MOUNTING INSTALLATION

B35



INSTALLATION SIZE AND OVERALL DIMENSION

Frame size	POLES	A	A2	B	C	D	E	F	G	H	K	M	N	P	S	T	FLANGE HOLES	AB	AC	AD	HD	L	DH*
80M	2468	125	62.5	100	50	19	40	6	15.5	80	10	165	130	200	12	3.5	4	165	158	140	220	300	M6X16
90S	2468	140	70	100	56	24	50	8	20	90	10	165	130	200	12	3.5	4	180	177	160	250	350	M8x19
90L	2468	140	70	125	56	24	50	8	20	90	10	165	130	200	12	3.5	4	180	177	160	250	385	M8x19
100L	2468	160	80	140	63	28	60	8	24	100	12	215	180	250	15	4	4	205	198	172	270	400	M10X22
112M	2468	190	95	140	70	28	60	8	24	112	12	215	180	250	15	4	4	226	235	193	300	425	M10X22
132S	2468	216	108	140	89	38	80	10	33	132	12	265	230	300	15	4	4	262	293	225	349	502	M12X28
132M	2468	216	108	178	89	38	80	10	33	132	12	265	230	300	15	4	4	262	293	225	349	533	M12X28
160M	2468	254	127	210	108	42	110	12	37	160	15	300	250	350	19	5	4	320	315	255	420	660	M16x36
160L	2468	254	127	254	108	42	110	12	37	160	15	300	250	350	19	5	4	320	315	255	420	730	M16x36
180M	2468	279	139.5	241	121	48	110	14	42.5	180	15	300	250	350	19	5	4	355	355	280	455	740	M16x36
180L	2468	279	139.5	279	121	48	110	14	42.5	180	15	300	250	350	19	5	4	355	355	280	455	810	M16x36
200L	2468	318	159	305	133	55	110	16	49	200	19	350	300	400	19	5	4	395	397	305	505	852	M20x42
225S	48	356	178	286	149	60	140	18	53	225	19	400	350	450	19	5	8	435	445	335	560	874	M20x42
225M	2	356	178	311	149	55	110	16	49	225	19	400	350	450	19	5	8	435	445	335	560	890	M20X42
225M	468	356	178	311	149	60	140	18	53	225	19	400	450	550	19	5	8	435	445	335	560	915	M20x42
250M	2	406	203	349	168	60	140	18	53	250	24	500	450	550	19	5	8	490	485	370	615	985	M20x42
250M	468	406	203	349	168	65	140	18	58	250	24	500	450	550	19	5	8	490	485	370	615	985	M20x42
280S	2	457	228.5	368	190	65	140	18	58	280	24	500	450	550	19	5	8	550	547	410	680	1045	M20X42
280S	468	457	228.5	368	190	75	140	20	67.5	280	24	500	450	550	19	5	8	550	547	410	680	1045	M20X42
280M	2	457	228.5	419	190	65	140	18	58	280	24	500	450	550	19	5	8	550	547	410	680	1095	M20X42
280M	468	457	228.5	419	190	75	140	20	67.5	280	24	500	450	550	19	5	8	550	547	410	680	1095	M20X42
315S	2	508	254	406	216	65	140	18	58	315	28	600	550	660	24	6	8	635	620	530	845	1185	M20x42
315S	468 10	508	254	406	216	80	170	22	71	315	28	600	550	660	24	6	8	635	620	530	845	1220	M20x42
315M	2	508	254	457	216	65	140	18	58	315	28	600	550	660	24	6	8	635	620	530	845	1290	M20X42
315M	468 10	508	254	457	216	80	170	22	71	315	28	600	550	660	24	6	8	635	620	530	845	1325	M20X42
315L	2	508	254	508	216	65	140	18	58	315	28	600	550	660	24	6	8	635	620	530	845	1290	M20X42
315L	468 10	508	254	508	216	80	170	22	71	315	28	600	550	660	24	6	8	635	620	530	845	1325	M20X42
355M	2	610	305	560	254	75	140	20	67.5	355	28	740	680	800	24	6	8	730	698	655	1010	1500	M20X42
355M	468 10	610	305	560	254	95	170	25	86	355	28	740	680	800	24	6	8	730	698	655	1010	1530	M20x42
355L	2	610	305	630	254	75	140	20	67.5	355	28	740	680	800	24	6	8	730	698	655	1010	1500	M20x42
355L	468 10	610	305	630	254	95	170	25	86	355	28	740	680	800	24	6	8	730	698	655	1010	1530	M20x42

TECHNICAL DATA

Frame size	Rated power	Full load speed in revolutions per minute	Full load current at rated voltage	Efficiency	Power factor	Direct on line starting torque ratio	Direct on line starting current ratio	Direct on line pull-up torque ratio	Direct on line pull out torque ratio	Mean sound pressure level @ 1m on no load	Voltage
Type	Output (kW)	Speed (r/min)	Amps (A)	EFF. (%)	P.F. (cosφ)	LRT/RLT	LRA/RLA	Tmin/RLT	BDT/RLT	Noise LwdB (A)	Voltage (V)
IE3-80M1-2	0.75	2890	1.64	80.7	0.82	2.3	7	1.5	2.3	62	400
IE3-80M2-2	1.1	2890	2.31	82.7	0.83	2.2	7.3	1.5	2.3	62	400
IE3-90S-2	1.5	2890	3.06	84.2	0.84	2.2	7.6	1.5	2.3	67	400
IE3-90L-2	2.2	2890	4.35	85.9	0.85	2.2	7.6	1.4	2.3	67	400
IE3-100L-2	3	2895	5.71	87.1	0.87	2.2	7.8	1.4	2.3	74	400
IE3-112M-2	4	2910	7.45	88.1	0.88	2.2	8.3	1.4	2.3	77	400
IE3-132S1-2	5.5	2940	10.1	89.2	0.88	2	8.3	1.2	2.3	79	400
IE3-132S2-2	7.5	2940	13.7	90.1	0.88	2	7.9	1.2	2.3	79	400
IE3-160M1-2	11	2950	19.6	91.2	0.89	2	8.1	1.2	2.3	81	400
IE3-160M2-2	15	2950	26.5	91.9	0.89	2	8.1	1.2	2.3	81	400
IE3-160L-2	18.5	2950	32.5	92.4	0.89	2	8.2	1.1	2.3	81	400
IE3-180M-2	22	2960	38.5	92.7	0.89	2	8.2	1.1	2.3	83	400
IE3-200L1-2	30	2970	52.1	93.3	0.89	2	7.6	1.1	2.3	84	400
IE3-200L2-2	37	2970	64	93.7	0.89	2	7.6	1.1	2.3	84	400
IE3-225M-2	45	2970	76.8	94	0.9	2	7.7	1	2.3	86	400
IE3-250M-2	55	2980	93.5	94.3	0.9	2	7.7	1	2.3	89	400
IE3-280S-2	75	2980	127	94.7	0.9	1.8	7.1	0.9	2.3	91	400
IE3-280M-2	90	2980	152	95	0.9	1.8	7.1	0.9	2.3	91	400
IE3-315S-2	110	2980	185	95.2	0.9	1.8	7.1	0.9	2.3	92	400
IE3-315M-2	132	2980	224	94.5	0.9	1.8	7.1	0.9	2.3	92	400
IE3-315L1-2	160	2980	265	95.6	0.91	1.8	7.2	0.9	2.3	92	400
IE3-315L2-2	200	2980	331	95.8	0.91	1.8	7.2	0.8	2.2	92	400
IE3-355M-2	250	2980	414	95.8	0.91	1.6	7.2	0.8	2.2	100	400
IE3-355L-2	315	2980	522	95.8	0.91	1.6	7.2	0.8	2.2	100	400
IE3-80M-4	0.75	1430	1.75	82.5	0.75	2.3	6.6	1.6	2.3	56	400
IE3-90S-4	1.1	1440	2.48	84.1	0.76	2.3	6.8	1.6	2.3	59	400
IE3-90L-4	1.5	1440	3.3	85.3	0.77	2.3	7	1.6	2.3	59	400
IE3-100L1-4	2.2	1455	4.52	86.7	0.81	2.3	7.6	1.5	2.3	64	400
IE3-100L2-4	3	1455	6.02	87.7	0.82	2.3	7.6	1.5	2.3	64	400
IE3-112M-4	4	1460	7.95	88.6	0.82	2.2	7.8	1.5	2.3	65	400
IE3-132S-4	5.5	1470	10.7	89.6	0.83	2	7.9	1.4	2.3	71	400
IE3-132M-4	7.5	1470	14.3	90.4	0.84	2	7.5	1.4	2.3	71	400
IE3-160M-4	11	1470	20.4	91.4	0.85	2.2	7.7	1.4	2.3	73	400
IE3-160L-4	15	1470	27.3	92.1	0.86	2.2	7.8	1.4	2.3	73	400
IE3-180M-4	18.5	1475	33.5	92.6	0.86	2	7.8	1.2	2.3	76	400
IE3-180L-4	22	1475	39.7	93	0.86	2	7.8	1.2	2.3	76	400

TECHNICAL DATA

Frame size	Rated power	Full load speed in revolutions per minute	Full load current at rated voltage	Efficiency	Power factor	Direct on line starting torque ratio	Direct on line starting current ratio	Direct on line pull-up torque ratio	Direct on line pull out torque ratio	Mean sound pressure level @ 1m on no load	Voltage
Type	Output (kW)	Speed (r/min)	Amps (A)	EFF. (%)	P.F. (cosφ)	LRT/RLT	LRA/RLA	Tmin/RLT	BDT/RLT	Noise LwdB (A)	Voltage (V)
IE3-200L-4	30	1480	53.8	93.6	0.86	2	7.8	1.2	2.3	76	400
IE3-225S-4	37	1485	66.1	93.9	0.86	2	7.4	1.2	2.3	78	400
IE3-225M-4	45	1485	80.2	94.2	0.86	2	7.4	1.1	2.3	78	400
IE3-250M-4	55	1485	97.6	94.6	0.86	2	7.4	1.1	2.3	79	400
IE3-280S-4	75	1485	129	95	0.88	2	6.9	1	2.3	80	400
IE3-280M-4	90	1485	155	95.2	0.88	2	6.9	1	2.3	80	400
IE3-315S-4	110	1485	187	95.4	0.89	2	7	1	2.2	88	400
IE3-315M-4	132	1485	224	95.6	0.89	2	7	1	2.2	88	400
IE3-315L1-4	160	1485	271	95.8	0.89	2	7.1	1	2.2	88	400
IE3-315L2-4	200	1485	334	96	0.9	2	7.1	0.9	2.2	88	400
IE3-355M-4	250	1490	418	96	0.9	2	7.1	0.9	2.2	95	400
IE3-355L-4	315	1490	526	96	0.9	2	7.1	0.8	2.2	95	400
IE3-90S-6	0.75	955	1.93	78.9	0.71	2	6	1.5	2.1	57	400
IE3-90L-6	1.1	955	2.69	81	0.73	2	6	1.3	2.1	57	400
IE3-100L-6	1.5	955	3.6	82.5	0.73	2	6.5	1.3	2.1	61	400
IE3-112M-6	2.2	970	5.09	84.3	0.74	2	6.6	1.3	2.1	65	400
IE3-132S-6	3	970	6.84	85.6	0.74	2	6.8	1.3	2.1	69	400
IE3-132M1-6	4	970	8.99	86.8	0.74	2	6.8	1.3	2.1	69	400
IE3-132M2-6	5.5	970	12	88	0.75	2	7	1.3	2.1	69	400
IE3-160M-6	7.5	980	15.4	89.1	0.79	2	7	1.3	2.1	73	400
IE3-160L-6	11	980	22	90.3	0.8	2	7.2	1.2	2.1	73	400
IE3-180L-6	15	980	29.3	91.2	0.81	2	7.3	1.2	2.1	73	400
IE3-200L1-6	18.5	985	36	91.7	0.81	2	7.3	1.2	2.1	73	400
IE3-200L2-6	22	985	42.5	92.2	0.81	2	7.4	1.2	2.1	73	400
IE3-225M-6	30	985	56.2	92.9	0.83	2	6.9	1.2	2.1	74	400
IE3-250M-6	37	990	68.1	93.3	0.84	2	7.1	1.2	2.1	76	400
IE3-280S-6	45	990	81.6	93.7	0.85	2	7.3	1.1	2	78	400
IE3-280M-6	55	990	98.1	94.1	0.86	2	7.3	1.1	2	78	400
IE3-315S-6	75	990	136	94.6	0.84	2	6.6	1	2	83	400
IE3-315M-6	90	990	161	94.9	0.85	2	6.7	1	2	83	400
IE3-315L1-6	110	990	196	95.1	0.85	2	6.7	1	2	83	400
IE3-315L2-6	132	990	232	95.4	0.86	2	6.8	1	2	83	400
IE3-355M1-6	160	990	281	95.6	0.86	1.8	6.8	1	2	85	400
IE3-355M2-6	200	990	346	95.8	0.87	1.8	6.8	0.9	2	85	400
IE3-355L1-6	250	990	433	95.8	0.87	1.8	6.8	0.9	2	85	400
IE3-355L2-6	315	990	552	95.8	0.86	1.8	6.8	0.9	2	85	400

Y SERIES
Y2 SERIES
M3 SERIES
IE3 SERIES
YB3 SERIES
AMP SERIES
YEJ SERIES
YVF2 SERIES
Y9 SERIES
YC SERIES
ML/MC SERIES
Y1 SERIES



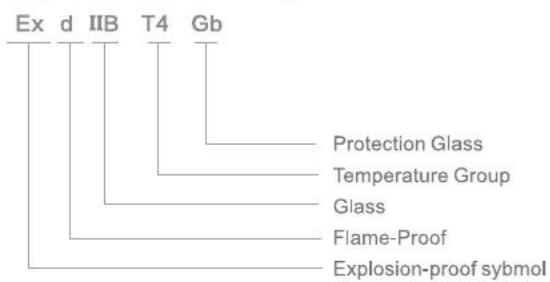
FEATURES:

YB3 series explosion-proof three-phase induction motor with fully sealed, fan-cooled, squirrel-cage structure with features of high efficiency, low noise, small vibration, high stall torque, reliable operation and beautiful outward. The energy saving level of YB3 motor is higher than GB18613-2012 standard IE3, near to IE2. It is a new type of explosion-proof motor that is being strongly promoted.

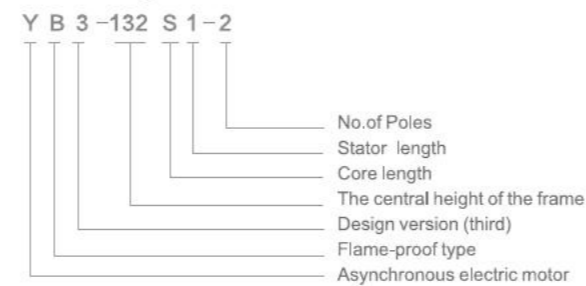
YB3 motor is in line with GB3836.2-2010(Explosive Atmosphere-Part two: Equipment Protected by Flameproof Enclosures "d"). The marks of explosion-proof are Exd I Mb; Exd II A T4 Gb; Exd II Bt4 Gb, protection class is Ip55, cooling method is Ic411, insulation class is F, work way is S1, Voltage: 380V,660V,1140V and 380V/660V,660V/1140V. Mainly used in oil field, chemical industry, tunnel construction and explosive environment of mine non-extractive surface.

The mounting dimensions and explosion-proof performance of this series motor is in accordance with.

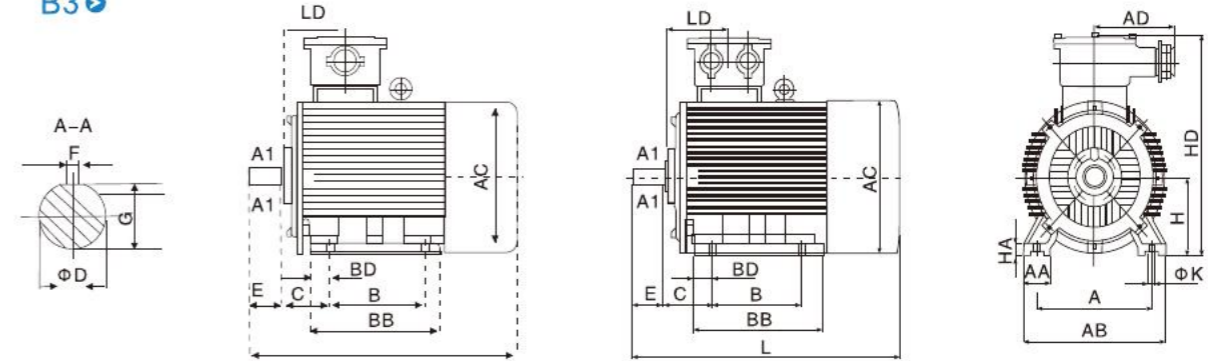
Explosion-proof designation:



Item Designation



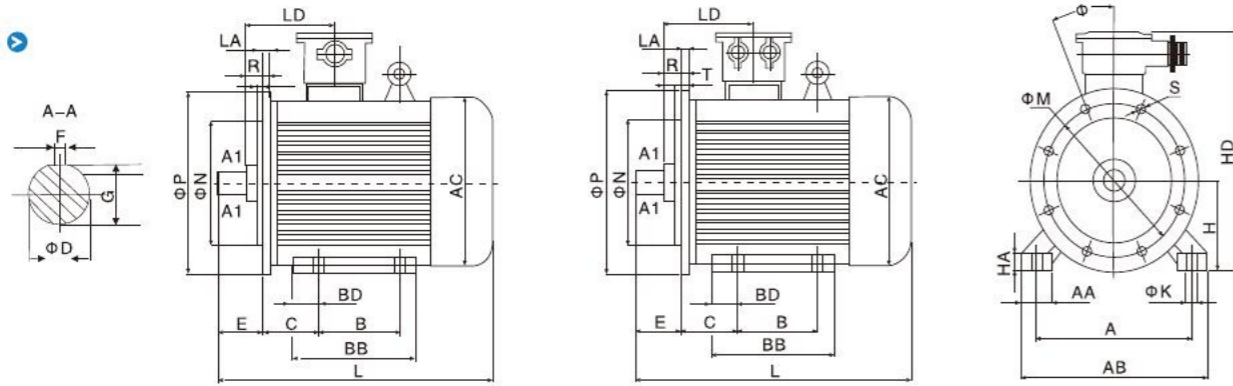
B3



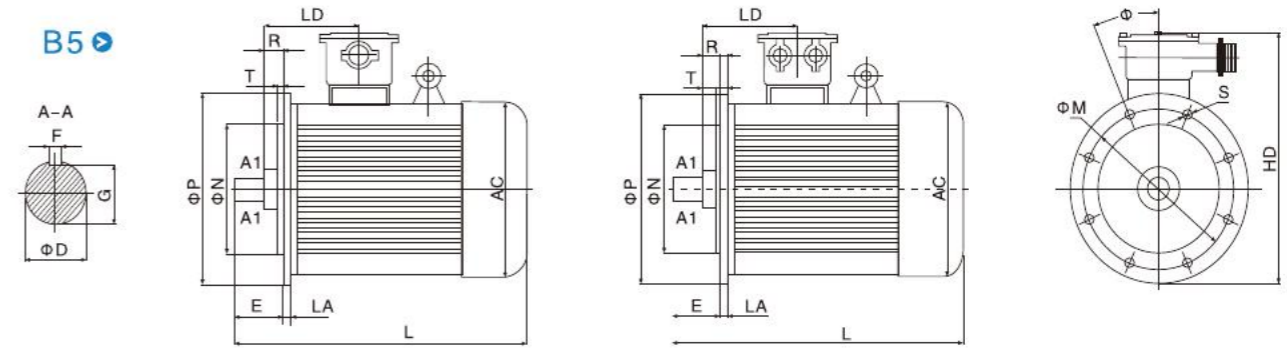
INSTALLATION SIZE AND OVERALL DIMENSION

Type	Poles	Mounting Dimensions(mm)									Outline Dimensions(mm)									
		A	B	C	D	E	F	G	H	K	AA	AB	AC	AD	BD	HA	HD	BB	LD	L
63M	2-4	100	80	40	11	23	4	8.5	63	7	25	130	150	170	15	8	230	110	78	250
71M	2-6	112	90	45	14	30	5	11	71	7	28	140	155	170	10	8	250	114	93	280
80M	2-8	125	100	50	19	40	6	15.5	80	10	34	165	170	175	14	10	320	130	101	320
90S	2-8	140	100	56	24	50	8	20	90	10	36	180	190	175	15	14	350	130	106	370
90L	2-8	140	125	56	24	50	8	20	90	10	36	180	190	175	15	14	350	155	106	395
100L	2-8	160	140	63	28	60	8	24	100	12	43	200	215	175	18	14	400	176	102	450
112M	2-8	190	140	70	28	60	8	24	112	12	50	245	230	185	20	16	420	180	123	510
132S	2-8	216	140	89	38	80	10	33	132	12	60	280	270	185	28	18	450	190	123	540
132M	2-8	216	178	89	38	80	10	33	132	12	60	280	270	185	28	18	450	230	123	590
160M	2-8	254	210	108	42	110	12	37	160	14.5	70	330	325	205	24	25	520	252	162	690
160L	2-8	254	254	108	42	110	12	37	160	14.5	70	330	325	205	24	25	520	302	162	730
180M	2-4	279	241	121	48	110	14	42.5	180	14.5	70	355	360	205	35	22	550	311	169	780
180L	4-8	279	279	121	48	110	14	42.5	180	14.5	70	355	360	205	35	22	550	349	169	800
200L	2-8	318	305	133	55	110	16	49	200	18.5	70	390	400	235	32	25	580	366	181	840
225S	4-8	356	286	149	60	140	18	53	225	18.5	75	435	450	235	35	28	630	355	206	890
225M	2	356	311	149	55	110	16	49	225	18.5	75	435	450	235	35	28	630	380	206	890
	4-8	356	311	149	60	140	18	53	225	18.5	75	435	450	235	35	28	630	380	206	920
250M	2	406	349	168	60	140	18	53	250	24	80	490	500	270	38	30	730	420	230	965
	4-8	406	349	168	65	140	18	58	250	24	80	490	500	270	38	30	730	420	230	965
280S	2	457	368	190	65	140	18	58	280	24	85	545	560	270	45	35	800	438	228	1040
	4-8	457	368	190	75	140	20	67.5	280	24	85	545	560	270	45	35	800	438	228	1040
280M	2	457	419	190	65	140	18	58	280	24	85	545	560	270	45	35	800	493	228	1090
	4-8	457	419	190	75	140	20	67.8	280	24	85	545	560	270	45	35	800	493	228	1090
315S	2	508	406	216	65	140	18	58	315	28	120	640	630	360	72	45	1000	550	297	1185
	4-10	508	406	216	80	170	22	71	315	28	120	640	630	360	72	45	1000	550	297	1260
315M	2	508	457	216	65	140	18	58	315	28	120	640	630	360	72	45	1000	680	297	1305
	4-10	508	457	216	80	170	22	71	315	28	120	640	630	360	72	45	1000	680	297	1380
315L	2	508	508	216	65	140	18	58	315	28	120	640	630	360	72	45	1000	680	297	1305
	4-10	508	508	216	80	170	22	71	315	28	120	640	630	360	72	45	1000	680	297	1380
355S	2	610	500	254	75	140	20	67.5	355	28	116	740	720	360	68	52	1080	636	316	1415
	4-10	610	500	254	95	170	25	86	355	28	116	740	720	360	68	52	1080	636	316	1485
355M	2	610	560	254	75	140	20	67.5	355	28	116	740	720	360	68	52	1080	696	316	1495
	4-10	610	560	254	95	170	25	86	355	28	116	740	720	360	68	52	1080	696	316	1565
355L	2	610	630	254	75	140	20	67.5	355	28	116	740	720	360	68	52	1080	766	316	1645
	4-10	610	630	254	95	170	25	86	355	28	116	740	720	360	68	52	1080	766	316	1675

B35



B5



⚙️ INSTALLATION SIZE AND OVERALL DIMENSION

Type	Poles	Mounting Dimensions(mm)														Outline Dimensions(mm)											
		A	B	C	D	E	F	G	H	K	M	N	P	R	S	T	Φ	AA	AB	AC	BB	BD	HA	HD	LA	LD	L
80M	2-8	125	100	50	19	40	6	15.5	80	10	165	130	200	0	4-Φ12	4	45	34	165	170	130	14	10	320	12	101	320
90S	2-8	140	100	100	24	50	8	20	90	10	165	130	200	0	4-Φ12	4	45	36	180	10	130	15	14	350	12	106	370
90L	2-8	140	125	125	24	50	8	20	90	10	165	130	200	0	4-Φ12	4	45	36	180	190	155	15	14	350	12	106	395
100L	2-8	160	140	140	28	60	8	24	100	12	215	180	250	0	4-Φ14.5	4	45	43	200	215	176	18	14	400	12	102	450
112M	2-8	190	140	140	28	60	8	24	112	12	215	180	250	0	4-Φ14.5	4	45	50	245	230	180	20	16	420	14	123	510
132S	2-8	216	140	140	38	80	10	33	132	12	265	230	300	0	4-Φ14.5	4	45	60	280	270	190	28	18	450	15	123	540
132M	2-8	216	178	178	38	80	10	33	132	12	265	230	300	0	4-Φ14.5	4	45	60	280	270	230	28	18	450	15	123	590
160M	2-8	254	210	210	42	110	12	37	160	14.5	300	250	350	0	4-Φ18.5	5	45	70	330	325	252	24	25	520	15	162	690
160L	2-8	254	254	254	42	110	12	37	160	14.5	300	250	350	0	4-Φ18.5	5	45	70	330	325	302	24	25	520	15	162	730
180M	2-4	279	241	241	48	110	14	42.5	180	14.5	300	250	350	0	4-Φ18.5	5	45	70	355	360	311	35	22	550	16	169	780
180L	4-8	279	279	279	48	110	14	42.5	180	14.5	300	250	350	0	4-Φ18.5	5	45	70	355	360	349	35	22	550	16	169	800
200L	2-8	318	305	305	55	110	16	49	200	18.5	350	300	400	0	8-Φ18.5	5	45	70	390	400	366	32	25	580	20	181	840
225S	4-8	356	286	286	60	140	18	53	225	18.5	400	350	450	0	8-Φ18.5	5	22.5	75	435	450	355	35	28	630	20	206	890
225M	2	356	311	311	55	110	16	49	225	18.5	400	350	450	0	8-Φ18.5	5	22.5	75	435	450	380	35	28	630	20	206	890
	4-8	356	311	311	60	140	18	53	225	18.5	400	350	450	0	8-Φ18.5	5	22.5	75	435	450	380	35	28	630	20	206	920
250M	2	406	349	349	60	140	18	53	250	24	500	450	550	0	8-Φ18.5	5	22.5	80	490	500	420	38	30	730	22	230	965
	4-8	406	349	349	65	140	18	58	250	24	500	450	550	0	8-Φ18.5	5	22.5	80	490	500	420	38	30	730	22	230	965
280S	2	457	368	368	65	140	18	58	280	24	500	450	550	0	8-Φ18.5	5	22.5	85	545	560	438	45	35	800	22	228	1040
	4-8	457	368	368	75	140	20	67.5	280	24	500	450	550	0	8-Φ18.5	5	22.5	85	545	560	438	45	35	800	22	228	1040
280M	2	457	419	419	65	140	18	58	280	24	500	450	550	0	8-Φ18.5	5	22.5	85	545	560	493	45	35	800	22	228	1090
	4-8	457	419	419	75	140	20	67.5	280	24	500	450	550	0	8-Φ18.5	5	22.5	85	545	560	493	45	35	800	22	228	1090
315S	2	508	406	406	65	140	18	58	315	28	600	550	660	0	8-Φ24	6	22.5	120	640	630	550	45	45	1000	30	297	1185
	4-10	508	406	406	80	170	22	71	315	28	600	550	660	0	8-Φ24	6	22.5	120	640	630	550	72	45	1000	30	297	1260
315M	2	508	457	457	65	140	18	58	315	28	600	550	660	0	8-Φ24	6	22.5	120	640	630	680	72	45	1000	30	297	1305
	4-10	508	457	457	80	170	22	71	315	28	600	550	660	0	8-Φ24	6	22.5	120	640	630	680	72	45	1000	30	297	1380
315L	2	508	508	508	65	140	18	58	315	28	600	550	660	0	8-Φ24	6	22.5	120	640	630	680	72	45	1000	30	297	1305
	4-10	508	508	508	80	170	22	71	315	28	600	550	660	0	8-Φ24	6	22.5	120	640	630	680	72	45	1000	30	297	1380
355S	2	610	500	500	75	140	20	67.5	355	28	740	680	800	0	8-Φ24	6	22.5	116	740	720	636	68	52	1080	25	316	1415
	4-10	610	500	500	95	170	25	86	355	28	740	680	800	0	8-Φ24	6	22.5	116	740	720	636	68	52	1080	25	316	1485
355M	2	610	560	560	75	140	20	67.5	355	28	740	680	800	0	8-Φ24	6	22.5	116	740	720	696	68	52	1080	25	316	1495
	4-10	610	560	560	95	170	25	86	355	28	740	680	800	0	8-Φ24	6	22.5	116	740	720	696	68	52	1080	25	316	1565
355L	2	610	630	630	75	140	20	67.5	355	28	740	680	800	0	8-Φ24	6	22.5	116	740	720	766	68	52	1080	25	316	1645
	4-10	610	630	630	95	170	25	86	355	28	740	680	800	0	8-Φ24	6	22.5	116	740	720	766	68	52	1080	25	316	1675

⚙️ INSTALLATION SIZE AND OVERALL DIMENSION

Type	Poles	Mounting Dimensions(mm)												Outline Dimensions(mm)				
		D	E	F	G	M	N	P	R	S	T	Φ	AC	HD	LA	LD	L	
63M	2-4	11	23	4	8.5	115	95	140	0	4-Φ10	3	45	150	230	12	78	250	
71M	2-6	14	30	5	11	130	110	160	0	4-Φ10	3	45	155	250	12	93	280	
80M	2-8	19	40	6	15.5	165	130	200	0	4-Φ12	3.5	45	170	320	12	101	320	
90S	2-8	24	50	8	20	165	130	200	0	4-Φ12	3.5	45	190	350	12	100	370	
90L	2-8	24	50	8	20	165	130	200	0	4-Φ12	3.5	45	190	350	12	106	395	
100L	2-8	28	60	8	24	215	180	250	0	4-Φ14.5	4	45	215	400	12	102	450	
112M	2-8	28	60	8	24	215	180	250	0	4-Φ14.5	4	45	230	420	14	123	510	
132S	2-8	38	80	10	33	265	230	300	0	4-Φ14.5	4	45	270	450	15	123	510	
132M	2-8	38	80	10	33	265	230	300	0	4-Φ14.5	4	45	270	450	15	123	590	
160M	2-8	42	110	12	37	300	250	350	0	4-Φ18.5	5	45	325	520	15	162	690	
160L	2-8	42	110	12	37	300	250	350	0	4-Φ18.5	5	45	325	520	15	162	730	
180M	2-4	48	110	14	42.5	300	250	350	0	4-Φ18.5	5	45	360	550	16	169	780	
180L	4-8	48	110	14	42.5	300	250	350	0	4-Φ18.5	5	45	360	550	16	169	800	
200L	2-8	55	110	16	49	350	300	400	0	8-Φ18.5	5	45	400	580	20	181	810	
225S	4-8	60	140	18	53	400	350	450	0	8-Φ18.5	5	45	450	630	20	206	890	
225M	2	55	110	16	49	400	350	450	0	8-Φ18.5	5	22.5	450	630	20	206	890	
	4-8	60	140	18	53	400	350	450	0	8-Φ18.5	5	22.5	450	630	20	206	920	
250M	2	60	140	18	53	500	450	550	0	8-Φ18.5	5	22.5	450	730	22	230	965	
	4-8	65	140	18	58	500	450	550	0	8-Φ18.5	5	22.5	500	730	22	230	965	
280S	2	65	140	18	58	500	450	550	0	8-Φ18.5	5	22.5	500	800	22	228	1040	
	4-8	75	140	20	67.5	500	450	550	0	8-Φ18.5	5	22.5	560	800	22	228	1040	
280M	2	65	140	18	58	500	450	550	0	8-Φ18.5	5	22.5	560	800	22	228	1090	
	4-8	75	140	20	67.5	500	450	550	0	8-Φ18.5	5	22.5	560	800	22	228	1090	

TECHNICAL DATA

Type	Rate Power		Current A		Speed (r/min)	P.F. (cos)	Eff. (%)	Locked Current	Locked Torque	Max. Torque	Moment of inertia	Weight Kg
	KW	HP	380V	400V				Rated Current	Rated Torque	Rated Torque	kg.m ²	
								Tstart/Tn	Ist/In	Tmax/Tn		
YB3-63M1-2	0.18	0.24	0.52	0.49	2720	0.80	66.0	5.0	2.2	2.3	0.0001	14
YB3-63M2-2	0.25	0.33	0.69	0.66	2720	0.81	68.0	5.0	2.2	2.3	0.0002	15
YB3-63M1-4	0.12	0.16	0.44	0.41	1310	0.72	58.0	4.0	2.3	2.2	0.0003	15
YB3-63M2-4	0.18	0.24	0.59	0.56	1310	0.73	63.0	4.0	2.3	2.2	0.0004	16
YB3-71M1-2	0.37	0.5	0.99	0.94	2740	0.81	70.0	5.5	2.2	2.3	0.0003	16
YB3-71M2-2	0.55	0.75	1.38	1.131	2740	0.83	73.0	5.5	2.3	2.3	0.0005	17
YB3-71M1-4	0.25	0.33	0.78	0.74	1330	0.74	66.0	4.0	2.3	2.2	0.0006	17
YB3-71M2-4	0.37	0.5	1.09	1.03	1330	0.75	69.0	4.0	2.3	2.2	0.0008	18
YB3-71M1-6	0.18	0.24	0.67	0.63	850	0.66	62.0	4.0	1.9	2.1	0.0012	12
YB3-71M2-6	0.25	0.33	0.89	0.84	850	0.68	63.0	4.0	1.9	2.1	0.0013	13
YB3-80M1-2	0.75	1	1.77	1.68	2840	0.83	77.5	6.8	2.3	2.3	0.0010	24
YB3-80M2-2	1.1	1.5	2.43	2.31	2840	0.82	82.8	7.3	2.3	2.3	0.0014	25
YB3-80M1-4	0.55	0.75	1.38	1.31	1390	0.75	80.7	6.3	2.3	2.3	0.0020	24
YB3-80M2-4	0.75	1	1.85	1.75	1390	0.75	82.3	6.5	2.3	2.3	0.0026	27
YB3-80M1-6	0.37	0.5	1.27	1.21	885	0.70	63.0	4.0	1.9	2.1	0.0023	20
YB3-80M2-6	0.55	0.75	1.54	1.46	885	0.72	75.4	4.0	1.9	2.1	0.0031	25
YB3-80M1-8	0.18	0.24	0.86	0.82	645	0.61	52.0	3.3	1.8	1.9	0.0029	20
YB3-80M2-8	0.25	0.33	1.13	1.08	645	0.61	55.0	3.3	1.8	1.9	0.0035	22
YB3-90S-2	1.5	2	3.23	3.06	2840	0.84	84.1	7.6	2.3	2.3	0.0022	35
YB3-90L-2	2.2	3	4.59	4.36	2840	0.85	85.6	7.8	2.3	2.3	0.0028	38
YB3-90S-4	1.1	1.5	2.66	2.53	1390	0.75	83.8	6.6	2.3	2.3	0.0039	34
YB3-90L-4	1.5	2	3.58	3.40	1390	0.75	85.0	6.9	2.3	2.3	0.0052	38
YB3-90S-6	0.75	1	2.04	1.94	910	0.72	77.7	5.8	2.1	2.1	0.0051	39
YB3-90L-6	1.1	1.5	2.87	2.72	910	0.73	79.9	5.9	2.1	2.1	0.0074	41
YB3-90S-8	0.37	0.5	1.44	1.37	670	0.62	63.0	4.0	1.8	2	0.0046	28
YB3-90L-8	0.55	0.55	1.79	1.70	670	0.63	74.0	4.0	1.8	2	0.0061	30

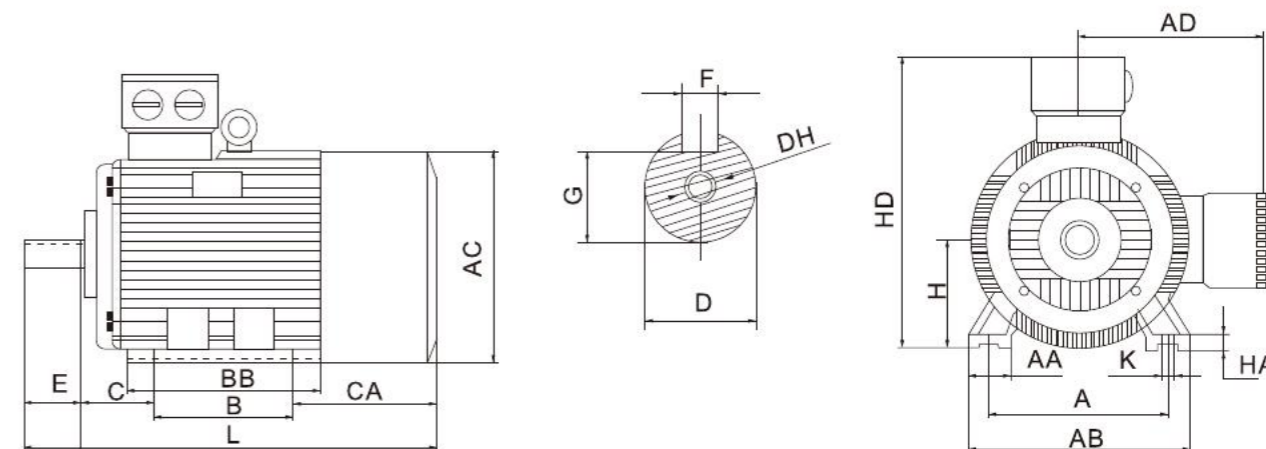
TECHNICAL DATA

Type	Power KW	Current (A)	Speed (r/min)	Eff. (%)	P.F. (cos)	Locked Current	Locked Torque	Max. Torque
						Rated Current	Rated Torque	Rated Torque
						Tstart/Tn	Ist/In	Tmax/Tn
Synchronous speed 3000r/min(2p)								
YB3-400-1-2	355	614	2980	95.5	0.92	1.6	7.0	2.0
YB3-400-2-2	400	695	2980	95.6	0.915	1.6	7.0	2.0
YB3-400-3-2	450	782	2980	95.6	0.915	1.6	7.0	2.0
YB3-400-4-2	500	868	2980	95.6	0.915	1.6	7.0	2.0
YB3-400-5-2	630	1094	2980	95.6	0.915	1.6	7.0	2.0
Synchronous speed 1500r/min(2p)								
YB3-400-1-4	355	628	1490	95.5	0.90	1.65	6.9	2.4
YB3-400-2-4	400	706	1490	95.6	0.90	1.65	6.9	2.4
YB3-400-3-4	450	790	1490	95.6	0.905	1.7	6.9	2.4
YB3-400-4-4	500	878	1490	95.6	0.905	1.7	6.9	2.4
YB3-400-5-4	560	983	1490	95.6	0.905	1.7	6.9	2.4
YB3-400-6-4	630	1106	1490	95.6	0.905	1.7	6.9	2.4
Synchronous speed 1000r/min(2p)								
YB3-400-1-6	280	521	990	94.9	0.86	1.9	7.0	2.3
YB3-400-2-6	315	586	990	95.0	0.86	1.9	7.0	2.3
YB3-400-3-6	355	660	990	95.0	0.86	1.9	7.0	2.3
YB3-400-4-6	400	740	990	95.0	0.86	1.9	7.0	2.3
YB3-400-5-6	450	832	990	95.0	0.86	1.9	7.0	2.3
YB3-400-6-6	500	924	990	95.0	0.86	1.9	7.0	2.3
Synchronous speed 750r/min(2p)								
YB3-400-1-8	220	431	740	94.9	0.82	1.8	6.8	2.0
YB3-400-2-8	250	490	740	94.6	0.82	1.8	6.8	2.0
YB3-400-3-8	280	548	740	91.6	0.82	1.8	6.8	2.3
YB3-400-4-8	315	613	740	94.6	0.825	1.8	6.8	2.3
YB3-400-5-8	355	691	740	94.6	0.825	1.8	6.8	2.3
YB3-400-6-8	400	779	740	94.6	0.825	1.8	6.8	2.3
Synchronous speed 600r/min(2p)								
YB3-400-1-10	200	427	590	93.7	0.76	1.6	6.0	1.8
YB3-400-2-10	220	469	590	93.7	0.76	1.6	6.0	1.9
YB3-400-3-10	250	533	590	93.7	0.76	1.6	6.0	1.9
YB3-400-4-10	280	597	590	93.8	0.76	1.6	6.0	1.9
YB3-400-5-10	315	663	590	93.8	0.77	1.6	6.0	1.9
YB3-400-6-10	355	747	590	93.8	0.77	1.6	6.0	1.9
Synchronous speed 500r/min(2p)								
YB3-400-3-12	185	488	495	92.9	0.62	1.6	5.5	2.0
YB3-400-4-12	200	528	495	92.9	0.62	1.6	5.5	2.0
YB3-400-5-12	220	562	495	92.9	0.64	1.6	5.5	2.0
YB3-400-6-12	250	638	495	92.9	0.64	1.6	6.0	2.0
YB3-400-7-12	280	715	495	92.9	0.64	1.6	6.0	2.0
YB3-400-8-12	355	906	495	92.9	0.64	1.6	6.0	2.0

Y SERIES
YZ SERIES
MS SERIES
IE2 SERIES
IE3 SERIES
YB3 SERIES
AMP SERIES
YB1 SERIES
YVF2 SERIES
YS SERIES
YC SERIES
MIL/INC SERIES
YL SERIES



⚙️ MOUNTING AND OVERALL DIMENSIONS
IM B3 H71-355



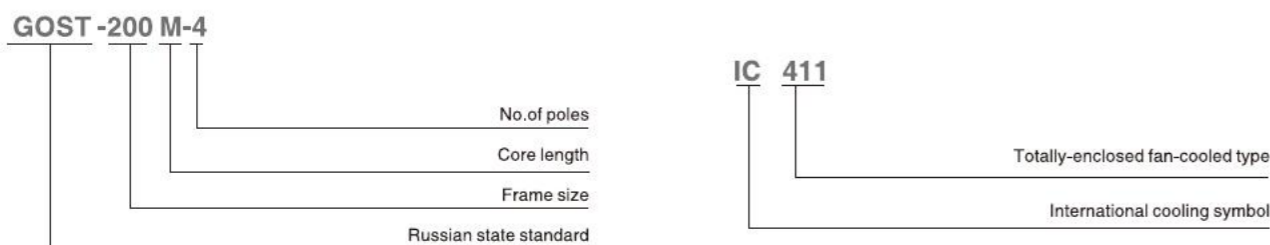
⚙️ FEATURES:

GOST Standard three-phase asynchronous electric motors, was introduced as an updated design, basically in conformity with IEC standard, but also combining other standards of electric motors in Russia and other eastern European countries. It fully absorbed the advanced technology of electric motor in the world. GOST Standard series motors with IP55 protection degree, class F insulation, and good function of energy saving can reach high efficiency class in Europe. It is an ideal energy saving product, moreover, it has other good features like high starting torque, low noise, optimum structure, unique appearance, convenient operation and so on. GOST Standard motors with the mounting dimension in accordance with standard IEC60034 and DIN426873 is identical to the performance and mounting dimension of GOST R51689-2000. GOST Standard motors can be widely used in various kinds of general use machineries like compressors, fans, pumps, machine tools, mills, transportation machines and so on, and can also be used in the hazardous area with oil and chemical, steel plants, marine industry, and mining industry.

⚙️ Operating Conditions:

- Ambient temperature: $-40^{\circ}\text{C} \leq \theta \leq 40^{\circ}\text{C}$
- Above sea level: not exceed 1000m
- Rated voltage: $\pm 5\%$
- Protection Class: IP55

⚙️ DESIGNATION:



⚙️ INSTALLATION SIZE AND OVERALL DIMENSION

Type	Poles	Overall Dimensions			Mounting Dimensions										
		GOST: L30 IEC: L	H31 HD	D30 AC	L1 E	L10 B	L11 BB	D1 D	D10 K	B1 F	B10 A	B11 AB	B31 AD	H H	H10 HA
71	2,4,6	270	186	155	40	90	120	19	19	6	112	138	75	71	7
80A	2,4,6	300	205	175	50	100	130	22	22	6	125	160	75	80	8
80B	2,4,6	320	205	175	50	100	130	22	22	6	125	160	75	80	8
90L	2,4,6	350	235	175	50	125	155	24	24	8	140	174	75	90	10
100S	2,4	376	255	175	60	112	148	28	28	8	160	196	75	100	12
100L	2,4,6	395	255	175	60	140	176	28	28	8	160	196	75	100	12
112MA	4,6	475	290	255	80	140	178	32	32	10	190	230	83	112	11
112MB	2,4,6,8	505	290	255	80	140	178	32	32	10	190	230	83	112	11
132S	4,6,8	505	345	255	80	140	184	3	3	10	216	260	83	132	13
132M	2,4,6	525	345	255	80	178	222	38	38	10	216	260	83	132	13
160S	4,6,8	620	415	320	110	178	218	48	48	14	254	304	160	160	18
160M	2,4,6,8	660	415	320	110	210	250	48	48	14	254	304	160	160	18
180S	2,4	700	445	350	110	203	249	48	48	14	279	330	190	180	23
180M	2,4,6,8	740	445	350	110	241	287	48	48	14	279	330	190	180	23
200M	2,4,6,8	770	500	400	110	267	337	55	55	16	318	390	205	200	28
225M	2	910	550	445	110	311	380	55	55	16	356	438	205	225	28
225M	4,6,8	910	550	445	140	311	380	65	65	18	356	438	205	225	28
250S	2,4,6,8	910	610	490	140	311	380	65	65	18	406	482	205	250	32
250M	2,4,6,8	950	610	490	140	349	420	65	65	18	406	482	205	250	32
280S	2,4,6,8	985	680	550	170	368	440	80	80	22	457	520	410	280	40
280M	2,4,6,8	1035	680	550	170	419	490	80	80	22	457	520	410	280	40
315S	2,4,6,8	1200	835	620	140	457	554	65	65	18	508	590	530	315	44
315M	2,4,6,8	1295	835	620	140	457	587	65	65	18	508	590	530	315	40
315L	2	1190	845	620	140	508	680	65	65	18	508	635	530	315	45
	4,6,8	1300	845	620	170	508	680	80	80	22	508	635	655	315	45
355M	2	1500	1010	698	140	560	760	75	75	20	610	730	655	355	52
	4,6,8	1530	1010	698	170	560	760	95	95	25	730	655	355	355	52
355L	2	1500	1010	698	140	630	760	75	75	20	610	730	655	355	52
	4,6,8	1530	1010	698	170	630	760	95	95	25	610	730	655	355	52

TECHNICAL DATA
SPEED 3000RPM 2-POLE 50HZ

Type	Rate Power		Speed (r/min)	IN 380V A	Eff (%)	P.F.(cos)	Ts/Tn	Tmax/Tn	Is/In	Moment (J) kgm ²	Noise	Weight
	KW	HP										
Synchronous Speed 3000 (r/min)												
71A2	0.75	1.0	2820	1.9	74.0	0.83	2.5	2.7	5.3	0.0006	61	8.7
71B2	1.1	1.5	2800	2.5	77.0	0.86	5.6	2.8	5.2	0.0008	61	10.5
80A2	1.5	2.0	2835	3.2	79.0	0.87	5.8	3.0	6.5	0.0011	63	13
80B2	2.2	3.0	2820	4.6	82.0	0.87	3.2	3.4	6.5	0.0018	63	15
90L2	3.0	4.0	2835	6.5	82.0	0.86	2.9	3.2	6.5	0.0024	63	17
100S2	4.0	5.5	2845	8.7	83.0	0.84	3.4	4.0	7.0	0.0070	66	20.5
100L2	5.5	7.5	2860	11.0	84.0	0.86	1.8	2.2	5.5	0.0080	66	28
112M2	7.5	10.0	2895	15.0	87.0	0.89	2.5	3.2	7.0	0.0185	69	49
132M2	11.0	15.0	2896	22.0	87.0	0.88	2.3	3.0	7.0	0.0227	69	54
160S2	15.0	20.0	2940	30.0	88.0	0.86	2.0	3.2	7.5	0.0500	75	116
160M2	18.5	25.0	2940	35.0	90.0	0.88	2.0	3.2	7.5	0.0550	75	130
180S2	22.0	30.0	2940	42.0	90.5	0.89	2.1	3.5	7.5	0.0620	79	150
180M2	30.0	40.0	2940	56.0	92.0	0.89	2.2	3.5	7.5	0.0700	79	170
200M2	37.0	50.0	2940	70.0	91.5	0.88	2.3	3.2	7.5	0.1400	82	230
200L2	45.0	60.0	2940	83.0	92.0	0.90	2.4	3.3	7.5	0.1600	82	255
225M2	55.0	75.0	2950	100	93.5	0.90	2.3	4.0	7.5	0.2000	84	320
250S2	75.0	100.0	2970	136	94.0	0.89	2.6	4.0	7.5	0.3500	84	450
250M2	90.0	125.0	2970	162	94.0	0.90	2.7	4.0	7.5	0.4000	86	530
280S2	110.0	150.0	2970	190	93.0	0.91	2.0	2.7	7.0	0.6000	86	650
280M2	132.0	180.0	2970	230	93.0	0.91	2.0	2.7	7.0	0.7000	86	700
315S2	160.0	220.0	2965	301	95.8	0.92	2.6	2.7	7.0	2.8200	87	1170
315M2	200.0	270.0	2973	360	96.1	0.93	2.1	2.0	7.0	3.6600	87	1460
355M2	250.0	340.0	2980	433	96.0	0.92	1.8	2.2	7.3	3.0000	103	1900
355L2	315.0	430.0	2980	545	96.0	0.92	1.8	2.2	7.1	3.5000	103	2300

SPEED 1500RPM 4-POLE 50HZ

Type	Output		Speed (r/min)	IN 380V A	Eff (%)	Power Factor	Ts/Tn	Tmax/Tn	Is/In	Moment (J) kgm ²	Noise	Weight
	KW	HP										
Synchronous Speed 1500 (r/min)												
71A4	0.55	0.75	1400	1.4	72.0	0.80	2.5	2.6	5.5	0.0010	56	8.4
71B4	0.75	1.0	1400	2.0	75.0	0.75	2.3	2.8	5.5	0.0015	56	10.0
80A4	1.1	1.5	1420	2.7	77.0	0.80	2.3	2.6	5.5	0.0028	53	14.0
80B4	1.5	2.0	1420	3.6	78.5	0.80	2.3	2.8	5.5	0.0034	53	16.0
90L4	2.2	3.0	1390	5.2	78.0	0.82	2.2	2.6	5.0	0.0056	53	17.0
100S4	3.0	4.0	1395	7.3	78.0	0.80	2.7	3.0	5.5	0.0100	62	21.0
100L4	4.0	5.5	1435	9.0	83.0	0.78	2.8	6.6	6.6	0.0130	62	37.0
112M4	5.5	7.5	1450	11.3	87.0	0.85	2.4	3.0	7.0	0.0236	59	45.0
132S4	7.5	10.0	1455	15.6	88.0	0.93	2.8	3.2	7.0	0.0227	59	52.0
132M4	11.0	15.0	1435	22.0	87.0	0.88	2.5	2.9	7.0	0.0349	59	60.0
160S4	15.0	20.0	1460	29.0	89.0	0.87	1.9	2.9	7.0	0.0600	67	125
160M4	18.5	25.0	1460	35.0	90.0	0.89	1.9	2.8	7.0	0.0650	67	142
180S4	22.0	30.0	1460	42.0	91.0	0.88	2.1	3.0	7.0	0.0700	73	160
180M4	30.0	40.0	1460	56.0	91.0	0.89	2.4	3.5	7.0	0.0800	73	190
200M4	37.0	50.0	1460	70.0	92.0	0.87	2.2	3.2	7.5	0.1500	76	230
200L4	45.0	60.0	1460	86.0	92.0	0.87	2.2	2.6	7.0	0.1800	76	260
225M4	55.0	75.0	1470	104.0	92.5	0.87	2.2	3.5	7.5	0.2000	75	325
250S4	75.0	100.0	1470	139.0	93.0	0.82	2.5	3.5	7.5	0.3500	75	450
250M4	90.0	125.0	1470	169.0	93.0	0.87	2.5	3.5	7.5	0.4000	80	495
280S4	110.0	150.0	1470	190.0	93.0	0.91	2.0	2.7	7.0	0.6000	80	650
280M4	132.0	180.0	1470	230.0	93.0	0.91	2.0	2.7	7.0	0.7000	80	700
315S4	160.0	220.0	1480	279.0	95.0	0.87	1.8	2.2	6.5	2.7000	81	1000
315M4	200.0	270.0	1480	343.0	95.0	0.88	2.0	2.4	6.8	4.8200	81	1200
355M4	250.0	340.0	1490	443.0	95.3	0.90	2.1	2.2	6.9	6.5000	101	1700
355L4	315.0	430.0	1490	558.0	95.3	0.90	2.1	2.2	6.9	8.2000	101	1900

TECHNICAL DATA
SPEED 1000RPM 6-POLE 50HZ

Type	Rate Power		Speed (r/min)	IN 380V A	Eff (%)	P.F.(cos)	Ts/Tn	Tmax/Tn	Is/In	Moment (J) kgm ²	Noise	Weight
	KW	HP										
Synchronous Speed 1000 (r/min)												
71A6	0.37	0.50	910	1.2	64.0	0.72	2.0	2.2	4.0	0.0015	51	8.4
71B6	0.55	0.75	915	1.8	67.0	0.70	2.0	2.2	4.0	0.0020	51	10.0
80A6	0.75	1.0	930	2.3	71.0	0.70	2.0	2.4	4.0	0.0035	52	14.0
80B6	1.1	1.5	930	3.2	72.0	0.72	2.0	2.4	4.0	0.0048	52	16.0
90L6	1.5	2.0	925	4.5	72.0	0.71	2.4	2.8	4.5	0.0066	60	18.0
100L6	2.2	3.0	950	5.4	78.0	0.76	2.2	2.7	5.3	0.0200	57	33.5
112MA6	3.0	4.0	960	7.0	83.0	0.79	2.2	2.6	5.9	0.0380	56	41.0
112MB6	4.0	5.5	960	9.0	84.0	0.80	2.2	2.6	6.0	0.0425	56	50.0
132S6	5.5	7.5	950	12.2	83.0	0.82	2.2	2.5	5.0	0.0500	62	56.0
132M6	7.5	10.0	960	17.5	84.5	0.77	2.8	3.1	6.5	0.0597	62	61.0
160S6	11.0	15.0	970	23.0	87.0	0.82	2.2	2.9	6.5	0.0700	65	125
160M6	15.0	20.0	970	31.0	89.0	0.82	2.3	3.0	7.0	0.0750	65	155
180M6	18.5	25.0	970	37.0	89.0	0.86	2.2	3.0	6.0	0.0900	69	160
200M6	22.0	30.0	970	46.0	87.0	0.84	2.0	2.5	6.0	0.2000	71	195
200L6	30.0	40.0	970	59.0	89.5	0.86	2.0	2.7	6.5	0.2500	71	225
225M6	37.0	50.0	973	66.0	91.0	0.89	2.0	2.3	6.0	0.8250	73	360
250S6	45.0	60.0	980	81.0	92.0	0.87	2.0	2.0	6.0	1.2800	75	465
250M6	55.0	75.0	980	97.5	92.5	0.88	2.1	2.2	6.0	1.4800	75	520
280S6	75.0	100.0	985	133	96.5	0.87	2.0	2.4	6.5	2.6300	75	690
280M6	90.0	125.0	990	157	94.0	0.88	2.0	2.4	6.5	3.3300	75	800
315S6	110.0	150.0	985	202	94.0	0.88	2.3	2.6	7.0	3.6000	76	880
315M6	132.0	180.0	985	240	95.0	0.88	2.4	2.6	7.0	6.0000	76	1050
355M6	160.0	220.0	990	292	95.8	0.88	1.9	2.0	7.2	9.5000	92	1550
355MB6	200.0	270.0	990	365	95.2	0.88	1.9	2.0	7.2	10.4000	92	1600
355L6	250.0	340.0	990	456	95.1	0.88	1.9	2.0	7.2	12.4000	92	1700

SPEED 750RPM 8-POLE 50HZ

Type	Rate Power		Speed (r/min)	IN 380V A	Eff (%)	P.F.(cos)	Ts/Tn	Tmax/Tn	Is/In	Moment (J) kgm ²	Noise	Weight
	KW	HP										
Synchronous Speed 750 (r/min)												
71B8	0.25	0.37	700	1.10	56.0	0.65	1.8	2.0	3.0	0.0025	43	9.0
80A8	0.37	0.50	700	1.54	59.0	0.59	1.9	2.1	3.0	0.0030	45	15.0
80B8	0.55	0.75	675	2.04	63.0	0.62	2.1	2.2	3.2	0.0038	45	18.0
90LA8	0.75	1.0	705	2.70	67.0	0.60	2.0	2.3	3.3	0.0063	49	23.0
90LB8	1.1	1.5	705	3.25	72.0	0.68	2.0	2.4	4.0	0.0090	49	28.0
100L8	1.5	2.0	705	4.10	75.0	0.71	2.2	2.5	4.4	0.0123	53	33.5
112MA8	2.2	3.0	705	5.60	75.0	0.75	1.7	2.3	4.0	0.0221	55	46.0
112MB8	3.0	4.0	700	7.40	78.0	0.73	1.7	2.3	4.0	0.0288	55	53.0
132S8	4.0	5.5	710	9.60	79.0	0.76	1.6	1.9	4.0	0.0690	59	70.0
132M8	5.5	7.5	710	13.0	80.0	0.76	1.7	2.1	4.0	0.0935	59	86.0
160S8	7.5	10.0	730	18.0	86.0	0.73	1.8	2.4	5.5	0.800	62	125
180M8	11.0	15.0	730	26.0	87.0	0.75	1.8	2.4	6.5	0.0850	62	150
180M8	15.0	20.0	730	35.0	86.5	0.76	2.0	2.7	5.5	0.1000	65	172
200M8	18.5	25.0	730	40.0	88.0	0.80	2.1	2.5	5.8	0.3000	65	210
200L8	22.0	30.0	730	49.0	88.5	0.77	2.0	2.5	6.0	0.3500	65	225
225M8	30.0	40.0	735	60.0	90.0	0.80	2.2	2.2	5.5	0.8250	67	360
250S8	37.0	50.0	735	73.5	91.0	0.80	2.0	2.0	5.5	1.3500	69	465
250M8	45.0	60.0	740	92.0	91.5	0.77	2.2	2.0	5.5	1.5500	69	520
280S8	55.											



FEATURES:

YEJ series brake motor, designed according to IEC standard, are totally-enclosed, fan-cooled, squirrel-cage three-phase asynchronous motors with additional electromagnetic brake disc dc direct current.

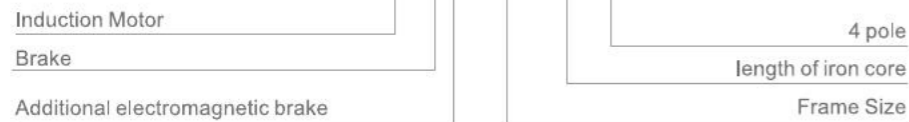
The motor with removable feet, is made of aluminum-alloy die-casting various mounting models available. It has a lot of advantages including beautiful modeling, compact structure, high efficiency, low noise, low vibration, etc. The brake has a manual and electrical release.

OPERATING CONDITIONS:

Ambient temperature: $-15^{\circ}\text{C} \leq \theta \leq 40^{\circ}\text{C}$
 Altitude: Not exceeding 1000 meters
 Rated voltage: 380V, 400V, 415V
 Rated frequency: 50Hz/60Hz
 Insulation class: Class B/F/H

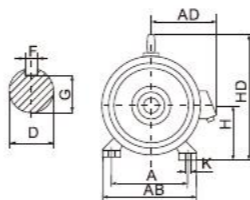
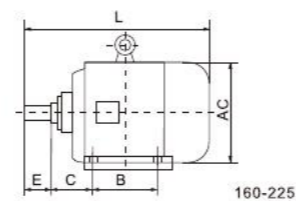
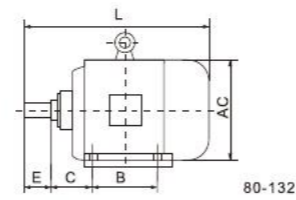
Duty/Rating: Continuous(S1)
 Connection: DC 99V for electromagnetic brake with power less than or equal to 3KW And DC 170V for brakes with power more than or equal to 4KW

YEJ 112 M - 4



INSTALLATION SIZE AND OVERALL DIMENSION

Frame Size	Installation Size (mm)									Overall Dimension (mm)				
	A	B	C	D	E	F	G	H	K	AB	AC	AD	HD	L
80S	125	100	50	19	40	6	15.5	80	10	165	165	150	170	378
90S	140	100	56	24	50	8	20	90	10	180	180	155	190	400
90L	140	125	56	24	50	8	20	90	10	180	180	155	190	425
100L	160	140	63	28	60	8	24	100	12	205	205	180	245	465
112M	190	140	70	28	60	8	24	112	12	245	230	190	265	495
132S	216	140	89	38	80	10	33	132	12	280	270	210	315	575
132M	216	178	89	38	80	10	33	132	12	280	270	210	315	615
160M	254	210	108	42	110	12	37	160	15	330	325	255	385	710
160L	254	254	108	42	110	12	37	160	15	330	325	255	385	755
180M	279	241	121	48	110	14	42.5	180	15	355	360	285	430	815
180L	279	279	121	48	110	14	42.5	180	15	355	360	285	430	865
200L	318	305	133	55	110	16	49	200	19	395	400	310	475	890
225S	356	286	149	60	140	18	53	225	19	435	450	345	530	990
225M(2 Pole)	356	311	149	55	110	16	49	225	19	435	450	345	530	990
225M(4,6,8 Pole)	356	311	149	60	140	18	53	225	19	435	450	345	530	1010



TECHNICAL DATA

Type	Rate Power (KW)	Full Load				Locked Torque Ist/In	Locked Current Tstart/Tn	Max. Torque Tmin/Tn	Resting Torque no less than N.m	Exciting Voltage UF (V)	Inertia Torque Gd ² (kg.m ²)	No load brake time no more than (S)
		Speed (r/min)	Current (A)	Eff.(%)	P.F.(cos)							
YEJ801-2	0.75	2825	1.9	73	0.84	7.0	2.2	2.2	7.36	100	0.00428	0.20
YEJ802-2	1.1	2825	2.6	76	0.86	7.0	2.2	2.2	7.36	100	0.00496	0.20
YEJ90S-2	1.5	2840	3.4	79	0.85	7.0	2.2	2.2	14.7	100	0.0074	0.25
YEJ90L-2	2.2	2840	4.7	82	0.86	7.0	2.2	2.2	14.7	100	0.00933	0.25
YEJ100L-2	3.0	2880	6.4	82	0.87	7.0	2.2	2.2	29.4	100	0.01064	0.3
YEJ112M-2	4.0	2890	8.2	85.5	0.87	7.0	2.2	2.2	39.2	170	0.03199	0.35
YEJ132S1-S	5.5	2900	11.1	86.2	0.88	7.0	2.2	2.2	73.6	170	0.06434	0.40
YEJ132S2-S	7.5	2900	15	86.2	0.88	7.0	2.2	2.2	73.6	170	0.0724	0.40
YEJ160M1-2	11	2930	21.8	87.2	0.88	7.0	2.2	2.2	147.2	170	0.22853	0.50
YEJ160M2-2	15	2930	29.4	88.2	0.88	7.0	2.2	2.2	147.2	170	0.26623	0.50
YEJ160L-2	18.5	2930	35.5	89	0.89	7.0	2.2	2.2	147.2	170	0.316	0.50
YEJ180M-2	22	2940	42.2	89	0.89	7.0	2.2	2.2	215.8	170	0.37637	0.60
YEJ200L1-2	30	2950	56.9	90	0.89	7.0	2.2	2.2	294.3	170	0.739	0.70
YEJ200L2-2	37	2950	69.8	90.5	0.89	7.0	2.2	2.2	294.3	170	0.8181	0.70
YEJ225M-2	45	2970	83.9	91.5	0.89	7.0	2.2	2.2	441.5	170	1.269	0.80
YEJ801-4	0.55	1390	1.6	70.5	0.76	6.5	2.2	2.2	7.36	100	0.00866	0.20
YEJ802-4	0.75	1390	2.1	72.5	0.76	6.5	2.2	2.2	7.36	100	0.01073	0.20
YEJ90S-4	1.1	1400	2.7	79	0.78	6.5	2.2	2.2	14.7	100	0.01132	0.25
YEJ90L-4	1.5	1400	3.7	79	0.79	6.5	2.2	2.2	14.7	100	0.0143	0.25
YEJ100L1-4	2.2	1420	5.0	81	0.82	7.0	2.2	2.2	29.4	100	0.02733	0.30
YEJ100L2-4	3.0	1420	6.8	82.5	0.81	7.0	2.2	2.2	29.4	100	0.03506	0.30
YEJ112M-4	4.0	1440	8.8	84.5	0.82	7.0	2.2	2.2	39.2	170	0.04969	0.35
YEJ132S-4	5.5	1440	11.6	85.5	0.84	7.0	2.2	2.2	73.6	170	0.11584	0.40
YEJ132M-4	7.5	1440	15.4	87	0.85	7.0	2.2	2.2	73.6	170	0.15404	0.40
YEJ160M-4	11	1460	22.6	88	0.84	7.0	2.2	2.2	147.2	170	0.3986	0.50
YEJ160L-4	15	1460	30.3	88.5	0.85	7.0	2.2	2.2	147.2	170	0.68288	0.50
YEJ180M-4	18.5	1470	35.9	91	0.86	7.0	2.2	2.2	215.8	170	0.68667	0.60
YEJ180L-4	22	1470	42.5	91.5	0.86	7.0	2.2	2.2	215.8	170	0.7677	0.60
YEJ200L-4	30	1470	56.8	92.5	0.87	7.0	2.2	2.2	294.3	170	1.3963	0.70
YEJ225S-4	37	1480	69.8	91.8	0.87	7.0	2.2	2.2	414.5	170	2.158	0.80
YEJ225M-4	45	1480	84.2	92.3	0.88	7.0	2.2	2.2	441.5	170	2.463	0.80
YEJ90S-6	0.75	910	2.3	72.5	0.70	6.0	2.0	2.2	14.7	100	0.01514	0.25
YEJ90L-6	1.1	910	3.2	73.5	0.72	6.0	2.0	2.0	14.7	100	0.01815	0.25
YEJ100L-6	1.5	940	4.0	77.5	0.74	6.0	2.0	2.0	29.4	100	0.03573	0.30
YEJ112M-6	2.2	940	5.6	80.5	0.74	6.0	2.0	2.0	39.2	170	0.07639	0.35
YEJ132S-6	3.0	960	7.2	83	0.76	6.5	2.0	2.0	73.6	170	0.15437	0.40
YEJ132M1-6	4.0	960	9.4	84	0.77	6.5	2.0	2.0	73.6	170	0.1906	0.40
YEJ132M2-6	5.5	960	12.6	85.3	0.78	6.5	2.0	2.0	73.6	170	0.2384	0.40
YEJ160M-6	7.5	970	17	86	0.78	6.5	2.0	2.0	147.2	170	0.45813	0.50
YEJ160L-6	11	970	24.6	86	0.78	6.5	2.0	2.0	147.2	170	0.59078	0.50
YEJ180L-6	15	970	31.4	89.5	0.81	6.5	1.8	2.0	215.8	170	0.9919	0.60
YEJ200L1-6	18.5	970	37.7	89.8	0.83	6.5	1.8	2.0	294.3	170	1.6609	0.70
YEJ200L2-6	22	970	44.6	90.2	0.83	6.5	1.8	2.0	294.3	170	1.838	0.70
YEJ225M-6	30	980	59.5	90.2	0.85	6.5	1.8	2.0	441.5	170	2.639	0.80
YEJ132S-8	2.2	710	5.8	81	0.71	5.5	2.0	2.0	73.6	170	0.15534	0.40
YEJ132M-8	3.0	710	7.7	82	0.72	5.5	2.0	2.0	73.6	170	0.19184	0.40
YEJ160M1-8	4.0	720	9.9	84	0.73	6.0	2.0	2.0	147.2	170	0.37563	0.50
YEJ160M2-8	5.5	720	13.3	85	0.74	6.0	2.0	2.0	147.2	170	0.4714	0.50
YEJ160L-8	7.5	720	17.3	86	0.75	5.5	2.0	2.0	147.2	170	0.60538	0.50
YEJ180L-8	10	730	17.7	86.5	0.77	6.0	1.7	2.0	215.8	170	0.9636	0.60
YEJ200L-8	15	730	34.1	88	0.76	6.0	1.8	2.0	294.3	170	1.194	0.70
YEJ225S-8	18.5	730	41.3	89.5	0.76	6.0	1.7	2.0	441.5	170	2.299	0.80
YEJ225M-8	22	730	47.6	90	0.78	6.0	1.8	2.0	441.5	170	2.436	0.80

INSTALLATION SIZE AND OVERALL DIMENSION

Figure 1 Motor with foot, but without flange

Frame Size	Installation size and tolerance																		Overall dimension							
	A		A/2		B		C		D		E		F		G ^a		H		K ^b			AB	AC	AD	HD	L
	Basic Size	Limit Deviation	Basic Size	Limit Deviation	Basic Size	Limit Deviation	Basic Size	Limit Deviation	Basic Size	Limit Deviation	Basic Size	Limit Deviation	Basic Size	Limit Deviation	Basic Size	Limit Deviation	Basic Size	Limit Deviation	Positional Deviation							
80M	125	±0.10	62.5	±0.10	100	±0.10	50	±0.10	19	±0.10	40	±0.10	6	0/-0.030	15.5	0/-0.10	80	±0.10	10	0/+0.360	165	175	145	220	370	
90S	140	±0.10	70	±0.10	100	±1.5	56	±1.5	24	+0.009/-0.004	50	±0.310	8	0/-0.036	24	±0.10	90	±0.10	12	0/+0.360	180	195	155	250	380	
90L	160	±0.50	80	±0.50	125	±2.0	63	±2.0	28	±0.10	60	±0.370	10	0/-0.036	24	±0.10	100	±0.10	15	0/+0.360	205	215	180	270	465	
112M	190	±0.50	95	±0.50	140	±2.0	70	±2.0	38	±0.10	80	±0.370	10	0/-0.036	33	±0.10	112	±0.10	19	0/+0.360	230	240	190	300	480	
132S	216	±0.50	108	±0.50	140	±2.0	89	±2.0	38	±0.10	80	±0.370	10	0/-0.036	33	±0.10	132	±0.10	19	0/+0.360	270	275	210	345	530	
132M	216	±0.50	108	±0.50	178	±2.0	89	±2.0	38	±0.10	80	±0.370	10	0/-0.036	33	±0.10	132	±0.10	19	0/+0.360	270	275	210	345	570	
160M	254	±0.50	127	±0.50	210	±2.0	108	±2.0	42	+0.018/-0.002	12	±0.10	12	0/-0.036	37	±0.10	160	±0.10	15	0/+0.360	320	330	255	420	660	
160L	254	±0.50	127	±0.50	254	±2.0	108	±2.0	42	+0.018/-0.002	12	±0.10	12	0/-0.036	37	±0.10	160	±0.10	15	0/+0.360	320	330	255	420	715	
180M	279	±0.75	140	±0.75	241	±3.0	121	±3.0	48	±0.10	110	±0.430	14	0/-0.043	42.5	0/0.20	180	±0.10	19	0/+0.360	355	380	280	455	775	
180L	279	±0.75	140	±0.75	279	±3.0	121	±3.0	48	±0.10	110	±0.430	14	0/-0.043	42.5	0/0.20	180	±0.10	19	0/+0.360	355	380	280	455	815	
200L	318	±0.75	159	±0.75	305	±3.0	133	±3.0	55	±0.10	16	±0.10	16	0/-0.043	49	±0.10	200	±0.10	19	0/+0.360	395	420	305	505	850	
225S	356	±0.75	178	±0.75	286	±3.0	149	±3.0	60	±0.10	18	±0.10	18	0/-0.043	53	±0.10	225	±0.10	19	0/+0.360	435	470	325	560	885	
225M	356	±0.75	178	±0.75	311	±3.0	149	±3.0	60	±0.10	18	±0.10	18	0/-0.043	53	±0.10	225	±0.10	19	0/+0.360	435	470	325	560	915	
250M	406	±1.00	203	±1.00	349	±4.0	168	±4.0	65	+0.030/-0.011	140	±0.500	20	0/-0.052	58	±0.10	250	±0.10	24	0/+0.430	490	510	370	615	980	
280S	457	±1.00	229	±1.00	368	±4.0	190	±4.0	75	+0.030/-0.011	140	±0.500	20	0/-0.052	67.5	±0.10	280	±0.10	24	0/+0.430	550	580	410	680	1085	
280M	457	±1.00	229	±1.00	419	±4.0	190	±4.0	75	+0.030/-0.011	140	±0.500	20	0/-0.052	67.5	±0.10	280	±0.10	24	0/+0.430	550	580	410	680	1135	
315S	508	±1.00	254	±1.00	406	±4.0	216	±4.0	80	±0.10	170	±0.500	22	0/-0.052	71	±0.10	315	±0.10	28	0/+0.430	635	645	530	845	1285	
315M	508	±1.00	254	±1.00	457	±4.0	216	±4.0	80	±0.10	170	±0.500	22	0/-0.052	71	±0.10	315	±0.10	28	0/+0.430	635	645	530	845	1395	
315L	508	±1.00	254	±1.00	508	±4.0	216	±4.0	80	±0.10	170	±0.500	22	0/-0.052	71	±0.10	315	±0.10	28	0/+0.430	635	645	530	845	1395	

Figure 3 Motor without foot, but with flange and holes

Frame Size	Flange No	Installation size and tolerance																		Overall dimension						
		D		E		F		G		M		N ^a		P		R ^a		S ^b		T		Flange holes	AC	AD	HD	L
		Basic Size	Limit Deviation	Basic Size	Limit Deviation	Basic Size	Limit Deviation	Basic Size	Limit Deviation	Basic Size	Limit Deviation	Basic Size	Limit Deviation	Basic Size	Limit Deviation	Basic Size	Limit Deviation	Basic Size	Limit Deviation	Positional Deviation	Basic Size					
80M	FF 19	19	±0.10	40	±0.10	6	0/-0.030	15.5	0/-0.10	165	130	200	±1.5	12	±0.10	12	±0.10	Φ 1.0	3.5	0	0	4	175	185	185	370
90S	FF 165	24	+0.009/-0.004	50	±0.310	8	0	20	±0.10	165	130	200	+0.014/-0.011	12	±0.10	12	±0.10	Φ 1.0	3.5	0	0	4	195	155	195	380
90L	FF 165	24	+0.009/-0.004	50	±0.310	8	0	20	±0.10	165	130	200	+0.014/-0.011	12	±0.10	12	±0.10	Φ 1.0	3.5	0	0	4	195	155	195	410
100L	FF 215	28	±0.370	60	±0.370	8	0/-0.036	24	±0.10	215	180	250	±2.0	15	±0.10	15	±0.10	Φ 1.0	3.5	0	0	4	215	180	245	465
112M	FF 215	28	±0.370	60	±0.370	8	0/-0.036	24	±0.10	215	180	250	±2.0	15	±0.10	15	±0.10	Φ 1.0	3.5	0	0	4	240	190	265	480
132S	FF 265	38	±0.370	80	±0.370	10	0/-0.036	33	±0.10	265	230	300	±2.0	15	±0.10	15	±0.10	Φ 1.0	3.5	0	0	4	275	210	315	530
132M	FF 265	38	±0.370	80	±0.370	10	0/-0.036	33	±0.10	265	230	300	±2.0	15	±0.10	15	±0.10	Φ 1.0	3.5	0	0	4	275	210	315	570
160M	FF 300	42	+0.018/+0.002	110	±0.480	12	0	37	0/-0.20	300	250	350	+0.016/-0.013	0	±0.10	0	±0.10	Φ 1.5	4	0	0	5	330	255	385	660
160L	FF 300	42	+0.018/+0.002	110	±0.480	12	0	37	0/-0.20	300	250	350	+0.016/-0.013	0	±0.10	0	±0.10	Φ 1.5	4	0	0	5	330	255	385	715
180M	FF 300	48	±0.480	140	±0.480	14	0	42.5	0/-0.20	300	250	350	±3.0	0	±0.10	0	±0.10	Φ 1.5	4	0	0	5	380	280	430	775
180L	FF 300	48	±0.480	140	±0.480	14	0	42.5	0/-0.20	300	250	350	±3.0	0	±0.10	0	±0.10	Φ 1.5	4	0	0	5	380	280	430	815
200L	FF350	55	±0.500	160	±0.500	16	0/-0.043	49	±0.10	350	300	400	±0.016	19	+0.520/0	19	+0.520/0	Φ 1.5	4	0	0	5	420	305	480	850
225S	FF 400	60	±0.500	180	±0.500	18	0	53	±0.10	400	350	450	±0.018	19	+0.520/0	19	+0.520/0	Φ 1.5	4	0	0	5	470	335	535	885
225M	FF 400	60	±0.500	180	±0.500	18	0	53	±0.10	400	350	450	±0.018	19	+0.520/0	19	+0.520/0	Φ 1.5	4	0	0	5	470	335	535	915
250M	FF 500	65	+0.030/+0.011	140	±0.500	18	0	58	±0.10	500	450	550	±0.020	19	+0.520/0	19	+0.520/0	Φ 1.5	4	0	0	5	510	370	595	980
280S	FF 500	75	±0.500	200	±0.500	20	0/-0.052	67.5	±0.10	500	450	550	±0.020	19	+0.520/0	19	+0.520/0	Φ 1.5	4	0	0	5	580	410	650	1085
280M	FF 500	75	±0.500	200	±0.500	20	0/-0.052	67.5	±0.10	500	450	550	±0.020	19	+0.520/0	19	+0.520/0	Φ 1.5	4	0	0	5	580	410	650	1135

A G=D-GE, GE limit deviation to 80 is (+0.10/0), others are (-0.20/0).
B P is the max. value
C R is the range between flange and shaft shoulder
D The positional deviation of S based on the shaft axis.

TECHNICAL DATA (1500 r/min)

Frame Size	Rate Power (KW)	Rate Torque (N.m)	Constant Torque HZ Range (Hz)	Constant Power HZ Range (Hz)
80M1	0.55	3.5	5-50	50-100
80M2	0.75	4.7		
90S	1.1	7.0		
90L	1.5	9.5		
100L1	2.2	14.0		
100L2	3	19.0		
112M	4	25.4		
132S	5.5	35.0		
132M	7.5	47.7		
160M	11	70.0		
160L	15	95.5		
180M	18.5	117.1		
180L	22	140.9		
200L	30	190.9		
225S	37	235.5		
225M	45	286.4		
250M	55	350.1		
280S	75	477.7		
280M	90	572.9		
315S	110	700.2		
315M	132	840.3		
315L1	160	1018.5		
315L2	200	1273.2		

Stainless Steel Motors

IP69K Protection
0.12-22KW / 0.18-30HP
1000RPM 1500RPM 3000RPM
Three Phase / Single Phase
Frame 63-180 / 56C-286TC
Mounting B3 B5 B14 B34 B35
IE3 / Premium Efficiency, CE Certified
Double Lip Seals (Viton), Inverter Duty Rated
Washdown Duty (High Temp Power Spray Washable)
All 304 Stainless Steel Construction (Polished Surface)



Aluminum Motors

IP67 Protection
0.37KW, 0.55KW, 0.75KW
Frame 71-80 B14
3 Phase 380V 50HZ 1400rpm



Stainless Steel Helical Inline Gearmotors

Size: 37-67
Ratio: 3.41-199.81
Input power: 0.12-7.5 KW
Output torque: 2.4-635 N.m



Stainless Steel Helical Bevel Gearmotors

Size: 37-67
Ratio: 3.97-145.14
Input power: 0.12-5.5 KW
Output torque: 10-8 880 N.m



Stainless Steel Worm Gearbox

Size: 30/40/50/63/75/90
Ratio: 7.5-100
Input power: 0.06-4 KW
Flange size: 56-112 / 48C-180TC



Stainless steel parts:

Flanges	Solid Shafts	Torque Arms	Metal Plate	Machined Parts
---------	--------------	-------------	-------------	----------------

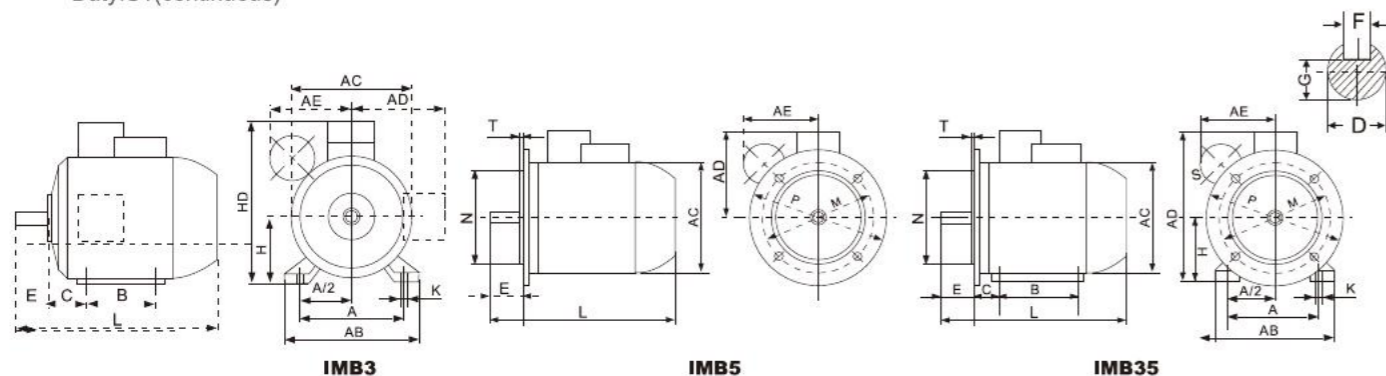


FEATURES:

YC series motor is a fully enclosed single-phase asynchronous motor with the latest design. With features like simple structure, reliable performance, easy maintenance and achievement of technical-economic targets, the products have been widely used in the air compressor, pump, refrigerator, washing machine, medical equipment, wood-working machinery, all kinds of agricultural machinery and so on. YC motor series have Protection class of E or B, cooling Method of IC411.

OPERATING CONDITONS:

Ambient temperature: $-15^{\circ}\text{C} < \theta < 40^{\circ}\text{C}$
 Altitude: not exceed 1000m
 Rated voltage: 220V
 Rated frequency: 50Hz or 60Hz
 protection class: IP44, IP54
 Insulation class: B, F
 Cooling method: IC411
 Duty: S1(continuous)

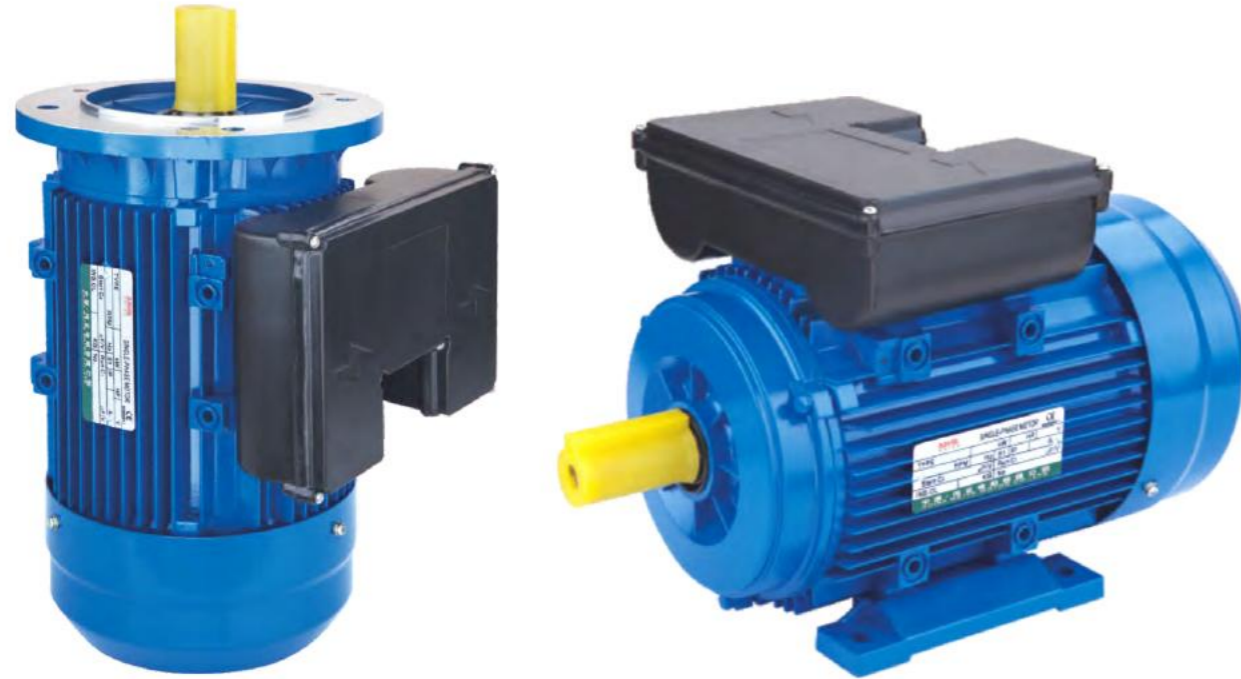


INSTALLATION SIZE AND OVERALL DIMENSION

Frame size	Installation Size (mm)													Overall Dimension (mm)							
	NO.	A	B	C	D	E	F	G	H	K	M	N	P	R	S	T	AB	AC	AE	AD	HD
80	125	100	50	19	40	6	15.5	80	10	165	130	200	0	12	3.5	160	165	110	120	200	310
90S	140	100	56	24	50	8	20	90	10	165	130	200	0	12	3.5	180	185	120	140	240	355
90L	140	125	56	24	50	8	20	90	10	165	130	200	0	12	3.5	180	185	120	140	240	385
100L	160	140	63	28	60	8	24	100	12	215	180	250	0	15	4	205	220	130	145	260	415
112M	190	140	70	28	60	8	24	112	12	215	180	250	0	15	4	245	250	140	160	300	448
132S	216	140	89	38	80	10	33	132	12	265	230	300	0	15	4	280	262	150	210	350	470
132M	216	178	89	38	80	10	33	132	12	265	230	300	0	15	4	280	262	150	210	350	553

TECHNICAL DATA(220V/50HZ)

Type	Output		Voltage (V)	Current (A)	Speed (r/min)	Eff (%)	Power factor	Locked Current	Locked Torque	Maximum Torque
	HP	KW						Rated Current Tstart/Tn	Rated Torque Ist/In	Rated Torque Tmax/Tn
YC80A-2	1/2	0.37	220	3.7	2880	62	0.73	2.8	6.5	1.8
YC80B-2	3/4	0.55	220	5.3	2880	65	0.73	2.8	6.5	1.8
YC80C-2	1	0.75	220	6.7	2880	68	0.75	2.8	6.5	1.8
YC90S-2	1.5	1.1	220	9.1	2880	71	0.77	2.4	7.0	1.8
YC90L-2	2	1.5	220	12.1	2880	72	0.78	2.4	7.0	1.8
YC100L-2	3	2.2	220	17.1	2900	74	0.79	2.1	7.0	1.8
YC112M1-2	4	3	220	21.4	2900	76	0.84	2.2	7.0	1.8
YC112M2-2	5	3.7	220	24.8	2900	79	0.86	2.2	7.0	1.8
YC80A-4	1/3	0.25	220	3.4	1450	56	0.60	2.8	6	1.8
YC80B-4	1/2	0.37	220	4.5	1450	60	0.62	2.8	6	1.8
YC80C-4	3/4	0.55	220	6.0	1450	64	0.65	2.8	6	1.8
YC90S-4	1	0.75	220	7.7	1450	67	0.66	2.4	6.5	1.8
YC90L-4	1.5	1.1	220	10.5	1450	70	0.68	2.4	6.5	1.8
YC100L-4	2	1.5	220	13.5	1450	72	0.70	2.4	6.5	1.8
YC112M-4	3	2.2	220	19.3	1450	72	0.72	2.2	6.5	1.8
YC132SA-4	4	3	220	25.2	1450	74	0.73	2.1	6.5	1.8
YC132SB-4	5	3.7	220	30	1450	75	0.74	2.1	6.5	1.8
YC132M-4	7.5	5.5	220	32.5	1450	81	0.95	2.1	6.5	1.8



FEATURES:

ML/MC series motor which adopting the latest design and high quality material. and conform to the IEC standard. The efficiency of motor meets EFF2 standard in Europe, and EFF1 standard if request. The motor has a lot of advantages including high efficiency, energy saving, low noise, little vibration, light weight, convenient operation and maintenance.

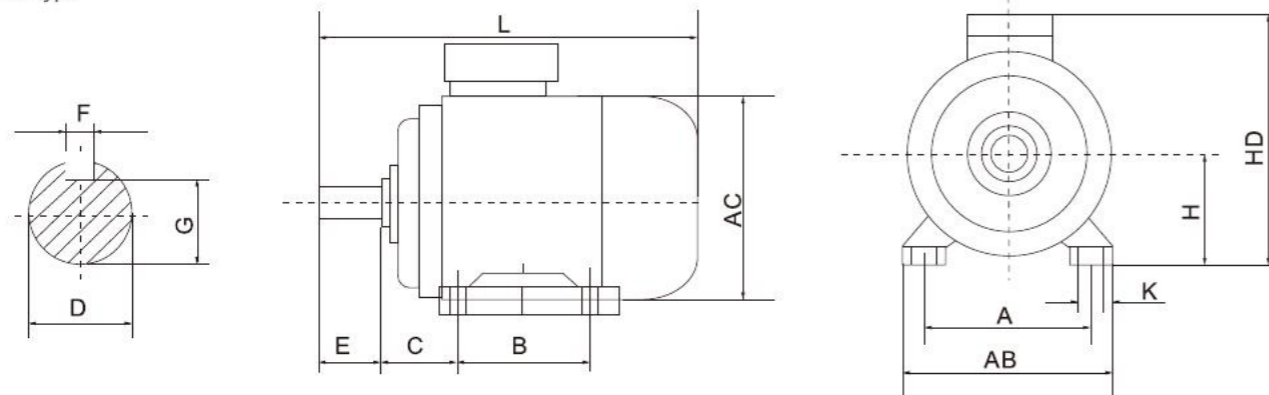
The motor with removable feet is made of aluminum-alloy die casting, various mounting mode are available.

The series motor are fit for the common sites and concise machines that has no special requirements including, air-compressor, pump fan medical apparatus and instruments, small machines, etc.

MOUNTING INSTALLATION

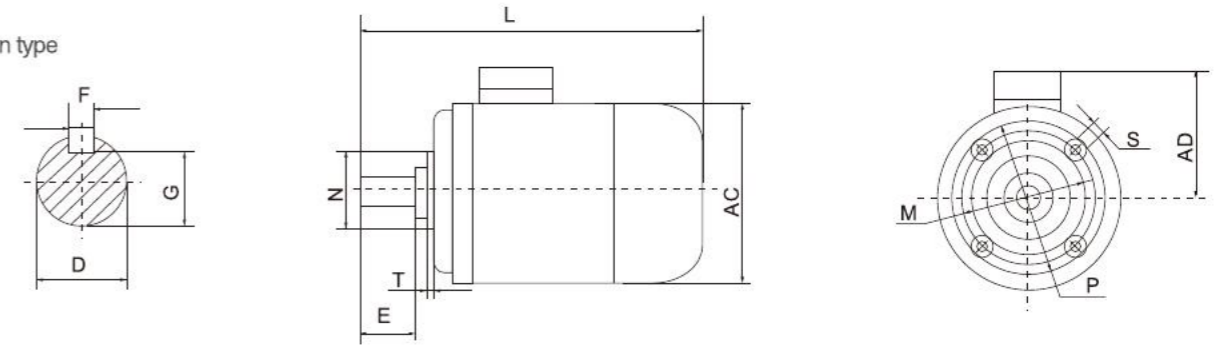
B3

Installation type



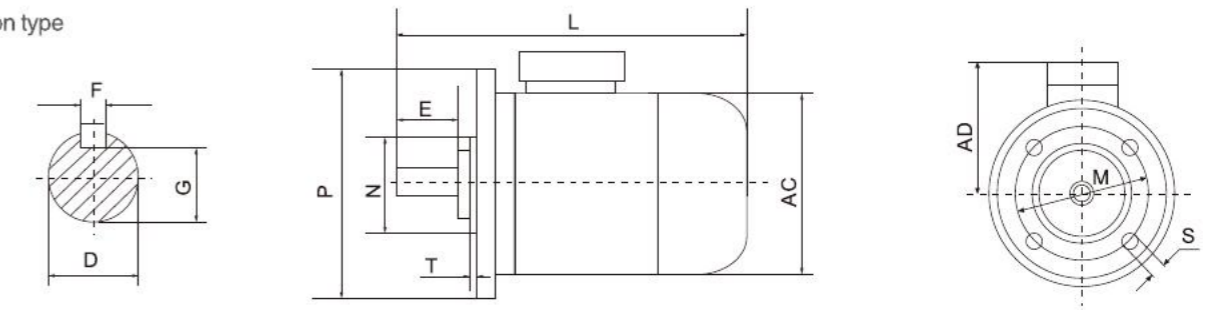
B14

Installation type



B5

Installation type



INSTALLATION SIZE AND OVERALL DIMENSION

Frame Size	Mounting dimension (mm)									Mounting Dimension For B5 (mm)					Mounting Dimension For B14 (mm)					Overall Dimension (mm)				
	A	B	C	D	E	F	G	H	K	M	N	P	S	T	M	N	P	S	T	AB	AC	AD	HD	L
63	100	80	40	11	23	4	8.5	63	7	115	95	140	10	3	75	60	90	M5	2.5	130	130	125	180	230
71	112	90	45	14	30	5	11	71	7	130	110	160	10	3.5	85	70	105	M6	2.5	145	145	130	200	255
80	125	100	50	19	40	6	15.5	80	10	165	130	200	12	3.5	100	80	120	M6	3	160	160	160	240	295
90S	140	100	56	24	50	8	20	90	10	165	130	200	12	3.5	115	95	140	M8	3	180	180	175	260	335
90L	140	125	56	24	50	8	20	90	10	165	130	200	12	3.5	115	95	140	M8	3	180	180	275	260	360
100L	160	140	63	28	60	8	24	100	12	215	180	250	15	4	130	110	160	M8	3.5	205	205	200	280	390
112M	190	140	70	28	60	8	24	112	12	215	180	250	15	4	130	110	160	M8	3.5	245	245	210	300	410

TECHNICAL DATA

Type	Output		Voltage (V)	Current (A)	Speed (r/min)	Eff (%)	P.F. (cos)	Frequency (Hz)	Locked Current Rated Current Tstart/Tn	Locked Torque Rated Torque Tst/Tn	Maximum Torque Rated Torque Tmax/Tn
	KW	HP									
ML/MC 711-2	0.37	0.5	220	2.46	2800	72	0.95	50	1.8	6.0	1.8
ML/MC 712-2	0.55	0.75	220	3.60	2800	73	0.95	50	1.8	6.0	1.8
ML/MC 801-2	0.75	1	220	4.85	2800	74	0.95	50	1.8	6.0	1.8
ML/MC 802-2	1.1	1.5	220	7.02	2800	75	0.95	50	1.8	6.0	1.8
ML/MC 90S-2	1.5	2	220	9.32	2830	77	0.95	50	1.8	6.0	1.8
ML/MC 90L-2	2.2	3	220	13.5	2830	78	0.95	50	1.8	6.0	1.8
ML/MC 100L-2	3	4	220	18.17	2870	79	0.95	50	1.8	6.0	1.8
ML/MC 711-4	0.25	0.34	220	1.79	1400	67	0.95	50	1.8	6.0	1.8
ML/MC 712-4	0.37	0.5	220	2.49	1400	71	0.95	50	1.8	6.0	1.8
ML/MC 801-4	0.55	0.75	220	3.65	1410	72	0.95	50	1.8	6.0	1.8
ML/MC 802-4	0.75	1.0	220	4.85	1410	74	0.95	50	1.8	6.0	1.8
ML/MC 90S-4	1.1	1.5	220	7.02	1430	75	0.95	50	1.8	6.0	1.8
ML/MC 90L-4	1.5	2	220	9.44	1430	76	0.95	50	1.8	6.0	1.8
ML/MC 100L1-4	2.2	3	220	13.5	1430	78	0.95	50	1.8	6.0	1.8
ML/MC 100L2-4	3	4	220	18.17	1430	79	0.95	50	1.8	6.0	1.8

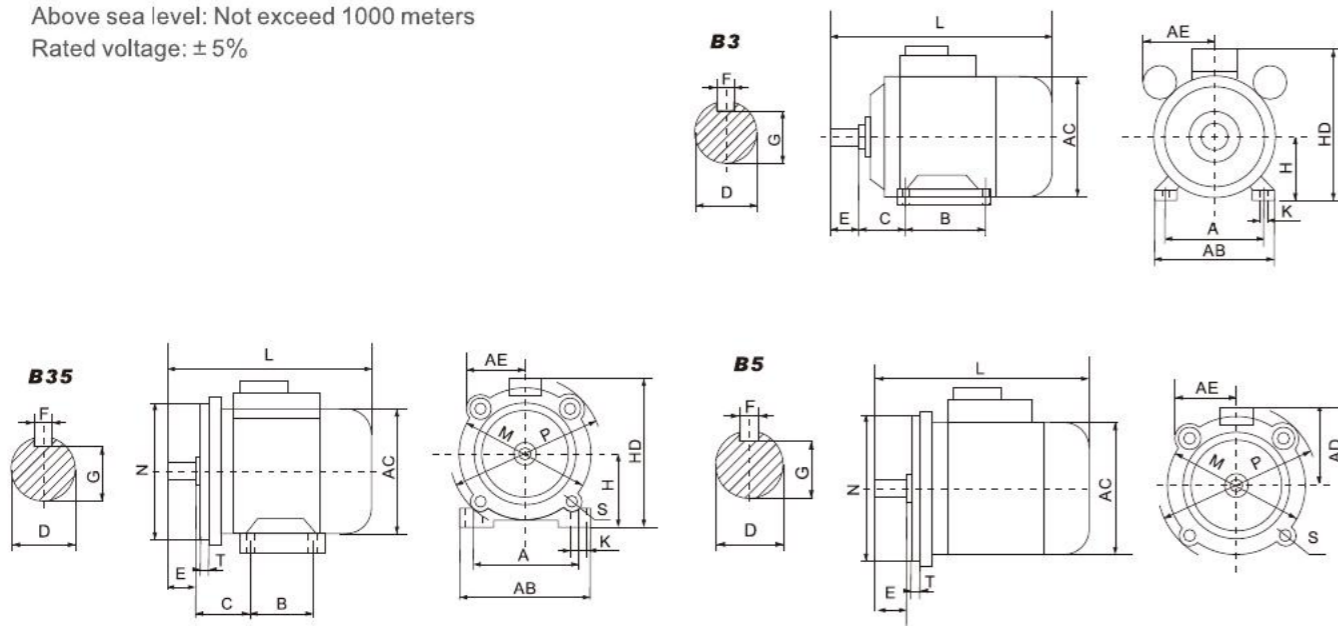


FEATURES:

YL series single phase dual-capacitor induction motor is designed and manufactured according to national standard, newly developed by our company with low noise, compact construction, light weight, easy maintenance, etc. These motors are widely used on air compressors, pumps, fans, refrigerator, medical instruments, small size machines, etc. especially for occasion where only single-phase power supply is available.

OPERATING CONDITIONS:

Ambient temperature: $-15^{\circ}\text{C} \leq 0 \leq 40^{\circ}\text{C}$
Above sea level: Not exceed 1000 meters
Rated voltage: $\pm 5\%$



INSTALLATION SIZE AND OVERALL DIMENSION

Frame size	Installation Size (mm)															Overall Dimension (mm)				
	A	B	C	D	E	F	G	H	K	M	N	P	R	S	T	AB	AC	AD	HD	L
71	112	90	45	14	30	5	11	71	7	130	110	160	0	10	3.5	145	145	140	180	255
80	125	100	50	19	40	6	15.5	80	10	165	130	200	0	12	3.5	160	165	150	200	295
90S	140	100	56	24	50	8	20	90	10	165	130	200	0	12	3.5	180	185	160	240	370
90L	140	125	56	24	50	8	20	90	10	165	130	200	0	12	3.5	180	185	160	240	400
I00L	160	140	63	28	60	8	24	100	12	215	180	250	0	15	4.0	205	220	180	260	430
112M	190	140	70	28	60	8	24	112	12	215	180	250	0	15	4.0	245	250	190	300	455
132S	216	140	89	38	80	10	33	132	12	265	230	300	0	15	4.0	280	290	210	350	525
132M	216	178	89	38	80	10	33	132	12	265	230	300	0	15	4.0	280	262	210	350	553

TECHNICAL DATA

Type	Output		Voltage (V)	Current (A)	Speed (r/min)	Eff (%)	P.F. (cos)	Frequency (Hz)	Locked Current Rated Current Tstart/Tn	Locked Torque Rated Torque Ist/In	Max.Torque Rated Torque Tmax/Tn
	KW	HP									
YL711-2	0.37	0.5	220	2.46	2800	72	0.95	50	1.8	6.0	1.8
YL712-2	0.55	0.75	220	3.60	2800	73	0.95	50	1.8	6.0	1.8
YL801-2	0.75	1	220	4.85	2800	74	0.95	50	1.8	6.0	1.8
YL802-2	1.1	1.5	220	7.02	2800	75	0.95	50	1.8	6.0	1.8
YL90S-2	1.5	2	220	9.32	2830	77	0.95	50	1.8	6.0	1.8
YL90L-2	2.2	3	220	13.5	2830	78	0.95	50	1.8	6.0	1.8
YL100L-2	3	4	220	18.17	2870	79	0.95	50	1.8	6.0	1.8
YL112M-2	3.7	5.0	220	22.1	2890	80	0.95	50	1.8	6.0	1.8
YL132S1-2	5.5	7.5	220	32.1	2940	82	0.95	50	1.8	6.0	1.8
YL711-4	0.25	0.34	220	1.79	1400	67	0.95	50	1.8	6.0	1.8
YL712-4	0.37	0.5	220	2.49	1400	71	0.95	50	1.8	6.0	1.8
YL801-4	0.55	0.75	220	3.65	1410	72	0.95	50	1.8	6.0	1.8
YL802-4	0.75	1.0	220	4.85	1410	74	0.95	50	1.8	6.0	1.8
YL90S-4	1.1	1.5	220	7.02	1430	75	0.95	50	1.8	6.0	1.8
YL90L-4	1.5	2	220	9.44	1430	76	0.95	50	1.8	6.0	1.8
YL100L1-4	2.2	3	220	13.5	1430	78	0.95	50	1.8	6.0	1.8
YL100L2-4	3	4	220	18.17	1430	79	0.95	50	1.8	6.0	1.8
YL112M-4	3.7	5	220	22.1	1450	80	0.95	50	1.8	6.0	1.8
YL132M-4	5.5	7.5	220	32.1	1460	82	0.95	50	1.8	6.0	1.8